

 **STINGRAY**

1990

YOU  
DESERVE  
IT.





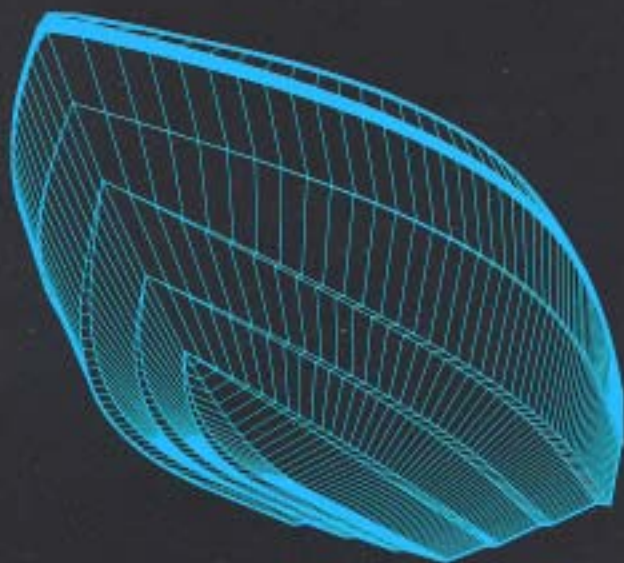
# Why Stingray?

## Because you deserve it.

**You deserve the design advantages that only Stingray can offer.**

For years the automotive industry has used 3-D computer technology to create innovative advances. But the

boating industry has been content to build boats the same 'old' way. Stingray has never been satisfied with leaving good enough alone. The same type of state-of-the-art design equipment that you demand in your automobile, Stingray demands of their boat line. With 3-D computerized design capabilities, Stingray designers can investigate hundreds of design options in the time it takes the com-



petition to try and work out all of the problems in one. Where 1/8" was at one time the variable in the industry, Stingray has brought the accuracy level to 1/1000".

Hull lines, weight distribution, overall design and even performance can be tested before the model ever goes to tooling. Ergonomics - the science of comfort - guarantees that all Stingrays will be built around you.

**You deserve the construction that's good enough to guarantee.**

The same attention to detail that leaves the design department insured to be maintained throughout the full gamut of manufacturing. A computerized router cuts all wood parts to maintain the highest accuracy levels and consistency in every Stingray. A prototype is built and put through the most rigorous on-the-water testing in both fresh and salt water. After testing, a mold is made and sent to the robotized lamination facility. The robotics facility allows the greatest attention to hand lamination by eliminating the choresome task of moving



heavy molds from one work station to the next.

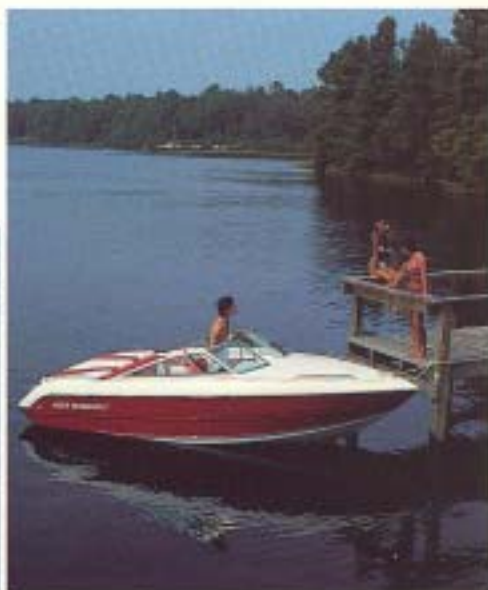
Uncommon to the industry, 20 mill gelcoat and alternating layers of 24 ounce woven roving are still used to insure the strongest hulls. Wood stringers and floors are permanently encapsulated in fiberglass and filled with foam while still in the mold. All deck hardware is installed with stainless steel screws into pre-laminated backing plates. The entire boat is assembled at the plant to assure that every part fits perfectly.

**You deserve the variety of sixteen exciting models.**

The sales philosophy we hold is not one of quick-sale gimmicks and one night stands.

When you buy Stingray,

you buy into a family that we intend to keep. Whether your taste is runabouts, cuddles, cruisers,



sportboats or fishing boats, we're committed to giving you room to grow. From 17' to 28' our quality is unmatched, no matter how you measure it. We're so dedicated



to that philosophy that we give you a three year extended warranty on everything we produce.





## 536zp / 537zp

The 536zp and 537zp are the first in a whole new era for Stingray. Designed with the newest computer design programs, the 'z plane' hull reaches amazing levels of on-the-water competence.

These new 17' models come standard with back-to-back sleeper lounge seats, rear jump seats and a padded motor box with built in drink holders. But, if you prefer a more sporty look and feel, you can choose our optional sundeck interior with sport bucket seats, a full bench seat and a comfortable sun deck. The 536zp has a deep, comfortable open bow, while the 537zp has a closed bow with a large bow cushion.

Although these are our smallest models we refuse to cut corners. From the cleats to the rails, all hardware is stainless steel, installed with stainless steel screws into areas reinforced with glassed-in backing plates.

You can pay more for less or you can invest in one of Stingray's newest legends.

**STANDARD EQUIPMENT:** Hand Laid 24 oz. Woven Rovings, Full Foam Flotation, NMMA Certification, Curved Safety Glass Windshield with Walk Thru, Molded in Transom Boarding Platform with Ladder, Complete Stainless Steel Hardware Package (Rails, Cleats, Stern & Bow Eyes, Ski Tow Ring), Stainless Steel Upholstery Fasteners, Bow Storage, In-Floor Insulated Ice Chest, In-Floor Storage Compartment, Mildew / Ultraviolet & Scuff Resistant Vinyls, All Weather Marine Carpet, Side Storage Panels, Sport Steering Wheel, Conveniently Mounted Drink Holders, Back to Back Sleeper Lounge Seating, Convertible Top, Custom Engine Compartment Ventilation, Deluxe Instrumentation, Bilge Blower, Bilge Pump, Horn (electric), AM/FM Stereo Cassette, Backlit Instrument Panel, Power Trim in Control Box Handle, Cockpit Lighting, Engine Compartment Lighting, Bow & Stern Lighting.

537zp



536zp



L.O.A.	5.3m (17'5")
Hull Length	16'5"
Beam	88"
536zp Weight (less engine)	1345 lbs.
537zp Weight (less engine)	1290 lbs.
Fuel capacity	28 gal.
Transom angle	15°
Deadrise	19°



L.O.A.	5.9m (19'5")
Hull Length	18'4"
Beam	9'4"
596zp Weight (less engine)	1680 lbs.
597zp Weight (less engine)	1630 lbs.
Fuel capacity	28 gal.
Transom angle	15°
Deadrise	19°

## 596zp / 597zp



597zp



596zp



In the pursuit of superb boating the 596zp and the 597zp stands head and shoulders above the competition. Every area of boating has been carefully studied to create these models.

The 596zp open bow is reinforced in the mold so that you can feel the stability as soon as you step inside. The bow is designed deep to keep small children secure when your boat is in motion. The 597zp closed bow has the sleek lines of a sportboat with a voluminous cabin area that's great for entertaining or storage.

The science of ergonomics has allowed us to gain optimum use of floor space. This means more arm room, leg room and walking space for you. Storage in the cabin area, floor, glove box and side panels will keep all your extras from taking up all your extra space. Little details such as stainless steel ski-tow ring and an AM/FM cassette stereo are also standard.

For a taste of unmatched comfort and performance, the 596zp / 597zp delivers.

**STANDARD EQUIPMENT:** Hand Laid 24 oz. Woven Roving, Full Foam Flotation, NMMA Certification, Curved Safety Glass Windshield with Walk Thru, Molded in Transom Boarding Platform with Ladder, Complete Stainless Steel Hardware Package (Rails, Cleats, Stern & Bow Eyes, Ski Tow Ring), Stainless Steel Upholstery Fasteners, Bow Storage, In-Floor Insulated Ice Chest, In-Floor Storage Compartment, Mildew / Ultraviolet & Scuff Resistant Vinyls, All Weather Marine Carpet, Side Storage Panels, Sport Steering Wheel, Conveniently Mounted Drink Holders, Back to Back Sleeper Lounge Seating, Convertible Top, Custom Engine Compartment Ventilation, Deluxe Instrumentation, Bilge Blower, Bilge Pump, Horn (electric), AM/FM Stereo Cassette, Backlit Instrument Panel, Power Trim in Control Box Handle, Cockpit Lighting, Engine Compartment Lighting, Bow & Stern Lighting.



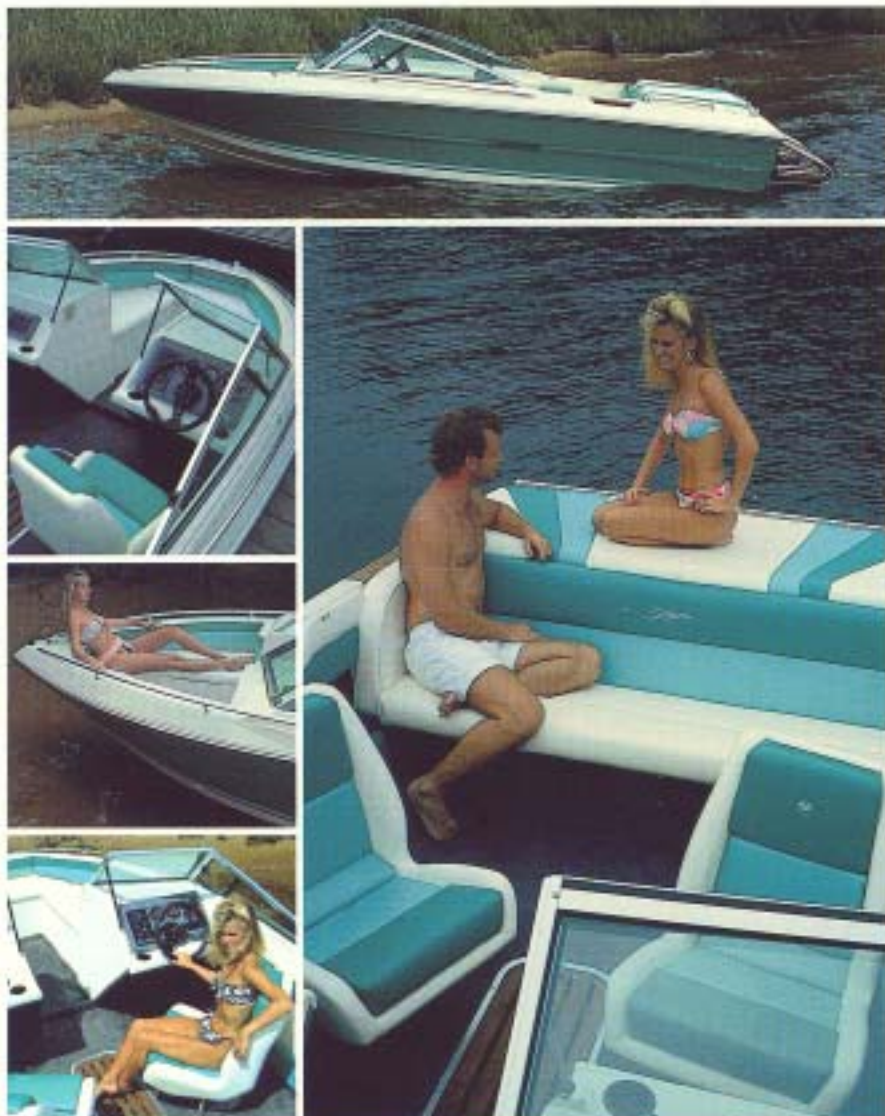
# SVB 198

The SVB 198 is a longer, wider bowrider with lots of room to stretch out and enjoy the ride. And the ride offered by its refined deep-v hull is comfortable indeed.

Since you'll be spending a lot of time on your 198, we've designed it to assure your comfort. The lounge seats offer firm support underneath the bold tri-tone upholstery. The steering wheel is contoured and cushioned. The instrument panel has easy to read analog instruments and lighted rocker switches. In-floor storage, a deep glove box and bow storage will keep your gear out of the way. The optional sundeck interior provides swivel sport buckets, a bench seat with storage beneath, and a large sunpad for soaking up rays.

So what are you waiting for? Get the gang together and head for your nearest Stingray dealer

**STANDARD EQUIPMENT:** NMMA Certification, S/S Bow & Stern Rail, Port Side Teak Swim Platform with S/S Step, Custom Engine Compartment Ventilation, Deluxe Instrumentation, Tinted Walk Thru Safety Glass Windshield, Adjustable Side Vent Windows, Glove Box (Lockable), S/S Ski Tow Ring, Back-to-Back Sleeper lounge Seat w/ Fore & Aft adjustment & Headrest, Rear Jump Seats, Bilge Blower, Bilge Pump, Horn (electric), Top w/ Storage, Teak Step Pads, Bow Storage, Insulated Bow Ice Chest w/ Drain, Ultraviolet / Mildew & Scuff Resistant Vinyts, All Weather Marine Carpet, Side Storage Panels, Floor Storage, Backlit Instrument Panel, Sport Steering Wheel, Power Trim, Conveniently Mounted Drink Holders, Ash Tray, Bow & Stern Lights, Rear Boarding Step, S/S Bow & Stern Eyes.



L.O.A.	19'3"
Beam	9'3"
Weight (less engine)	1560 lbs.
Fuel capacity	37 gal.
Transom angle	15°
Deadrise	20°





# 656zp / 657zp

L.O.A.	6.5m (21'5")
Hull Length	20'3"
Beam	96"
656zp Weight (less engine)	2179 lbs.
657zp Weight (less engine)	2119 lbs.
Fuel capacity	43 gal.
Transom angle	15°
Deadrise	19°



656zp



657zp

The designers at Stingray hold to the view that the beauty of a boat lies in its hull lines, attention to detail and performance - not in superfluous decoration and gaudy graphics. The 656zp and the 657zp exemplify such ideals.

The long sleek lines of the 'z plane' hull fuses function with fashion to produce a hull that looks as good as it performs. Inspired by the tradition and reputation of the Stingray's of the past, these boats had to meet the highest criteria of performance and comfort.

The spaciousness of these models make having friends on board a pleasure. The interior whether standard or optional sundeck interior, pleases both those who like to unwind and those with a more sporting attitude. The highest quality of marine vinyl is used throughout to prevent damage from the elements.

Experience the real beauty of boating. Experience the 656zp / 657zp.

**STANDARD EQUIPMENT:** Hand Laid 24 oz. Woven Rovings, Full Foam Flotation, NMMA Certification, Curved Safety Glass Windshield with Walk Thru, Molded In Transom Boarding Platform with Ladder, Complete Stainless Steel Hardware Package (Rails, Cleats, Stern & Bow Eyes, Ski Tow Ring), Stainless Steel Upholstery Fasteners, Bow Storage, In-Floor Insulated Ice Chest, In-Floor Storage Compartment, Mildew / Ultraviolet & Scuff Resistant Vinyls, All Weather Marine Carpet, Side Storage Panels, Sport Steering Wheel, Conveniently Mounted Soft Drink Holders, Back to Back Sleeper Lounge Seating, Convertible Top, Custom Engine Compartment Ventilation, Deluxe Instrumentation, Bilge Blower, Automatic Bilge Pump, Horn (electric), AM/FM Stereo Cassette, Backlit Instrument Panel, Power Trim in Control Box Handle, Cockpit Lighting, Engine Compartment Lighting, Bow & Stern Lighting.



## SVC 199

Describing the SVC 199 as "stylish" is definitely an understatement. The exterior lines grab attention, and hint at the exceptional smoothness and handling you will experience on the water. With vibrant graphics and hull colors, you won't go unnoticed.

It's vivid upholstery invites you aboard, and once inside you won't be disappointed. The seats are as comfortable as they are beautiful, offering firm support no matter how long you're out. There's an ice chest in the floor, and conveniently placed drink holders throughout.

Like all our models, absolute accuracy has become almost an obsession. The wood parts are all cut out by a computerized router, guaranteeing the highest level of accuracy - consistently.

So if you're in the market for a classic look with a generous ability to perform, you're in the market for the SVC 199.

**STANDARD EQUIPMENT:** NMMA Certification, S/S Bow and Stern Rail, Port Side Teak Swim Platform with S/S Step, Custom Engine Compartment Ventilation, Deluxe Instrumentation, Tinted Walk Thru Safety Glass Windshield, Adjustable Side Vent Windows, S/S Ski Tow Ring, Back-to-Back Sleeper Lounge Seat with Fore & Aft adjustment & Headrest, Rear Jump Seats, Bilge Blower, Automatic Bilge Pump, Horn (electric), Top with Storage, Teak Step Pads, Ultraviolet/Mildew & Scuff Resistant Vinyts, All Weather Marine Carpet, Side Storage Panels, Porta-Potti, In-floor Insulated Ice Chest, Double Bi-fold Cabin Doors (lockable), Translucent Deck Hatch, Backlit Instrument Panel, Sport Steering Wheel, Power Trim, Conveniently Mounted Drink Holders, Ash Tray, Cabin Windows, Dual Cabin Lights, Bow & Stern Lights, V-Berth Cushions, Rear Boarding Steps, S/S Bow and Stern Eyes.



L.O.A.	19'3"
Beam	9'3"
Weight (less engine)	1680 lbs.
Fuel capacity	37 gal.
Transom angle	15°
Deadrise	20°



# SVC 210

L.O.A.	20'1"
Beam	9'6"
Weight (less engine)	2270 lbs.
Fuel capacity	42 gal.
Transom angle	15°
Deadrise	20°



In many cases performance is sacrificed at the cost of cabin space. But this is not the case for the SVC 210. This cuddy is packed with luxuries unlike any cuddy in its class.

The SVC 210 has seven feet of sleeping space that easily provides for two. An entertainment center furnishing a handpump sink, AM/FM cassette stereo, convenient cabinet space, and an alcohol stove are standard. A portable head is also an amenity in this amazing cuddy.

As for performance, the 210 is still uniquely Stingray. *Powerboat* magazine said, "on the water...it's in a league by itself." Exceptional control and agility make this cuddy excellent for skiing.

So experience the best of both worlds. Experience the SVC 210.

**STANDARD EQUIPMENT:** NMMA Certification, S/S Bow & Stern Rail, Port Side Teak Swim Platform w/ S/S Step, Custom Engine Compartment Ventilation, Deluxe Instrumentation, Tinted Walk-Thru Safety Glass Windshield, Adjustable Side Vent Windows, S/S Ski Tow Ring, Back-to-Back Sleeper Lounge Seat w/ Fore & Aft Adjustment & Headrest, Rear Jump Seats, Sport Bucket Seat w/ Swivel & Slide, Bilge Blower, Automatic Bilge Pump, Horn (electric), Top w/ Storage, Teak Step Pads, In-Floor Insulated Ice Chest, Teak and Plexiglass double Bi-fold Cabin Doors (lockable), Translucent Deck Hatch, Ultraviolet / Mildew & Scuff Resistant Vinyls, All Weather Marine Carpet, Side Storage Panels, Porta-Potti, Stereo, Stainless Steel Sink & Alcohol Stove, Backlit Instrument Panel, Sport Steering Wheel, Power Trim, Conveniently Mounted Drink Holders, Ash Tray, Cabin Windows, Dual Cabin Lights, Cockpit Lighting, Bow & Stern Lights, V-berth Cushions, Rear Boarding Step, S/S Cleats, S/S Bow & Stern Eyes.



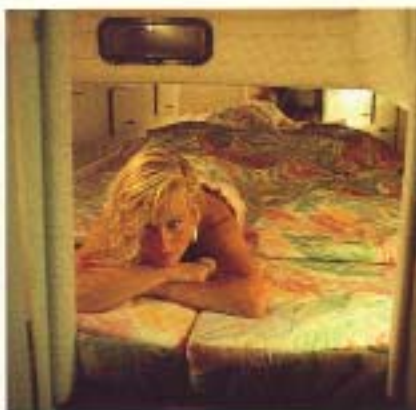
# SVC 270

The SVC 270 is ingenious with its layout that uses every square inch to its optimum effectiveness. It gives you a full kitchen with sink, alcohol stove, 110V-12V refrigerator, storage drawers, storage cabinets and dining area that converts to a berth that sleeps two. An aft berth also comfortably sleeps two and an enclosed head is complete with vanity, sink, shower and porta-potti.

Up top, the cockpit offers a large L-shaped bench seat that leaves plenty of open floor space. The helm seat opens from the back to provide a large wet bar. AM/FM cassette stereo and weatherband keeps you informed as well as entertained.

What more could you ask for in a cruiser?

**STANDARD EQUIPMENT:** Hand Laid 24 oz. Woven Roving, Box Beam Stringer Construction, Molded In Transom Boarding Platform w/ Ladder, S/S Bow & Stern Eyes, S/S Rails, Windshield with Adjustable Side Vents, S/S Cleats, Fiberglass Cockpit Liner with Non-skid Sole, Anchor and Anchor Line Storage, Transom Door, Fiberglass Cabin Liner, S/S Destroyer Style Steering Wheel, S/S Upholstery Fasteners, Command Bridge Bench Seat, Lounge Seat, Smoked Plexiglass Cabin Door (Lockable), (2) Bimini Cabin Hatches w/ Screens, Privacy Curtains, Forward V-Berth (Sleeps 2), Spacious Aft Cabin (Sleeps 2), Dinette Area w/ Table, Aft Cabin Window, Vanity, Sink, Shower, Head with deck pump-out connection, Cut Pile Carpet, Large Deluxe Top, Ultraviolet/Mildew and Scuff Resistant Vinyls, Conveniently Mounted Drink Holders, Hanging Locker, Complete Galley (S/S Sink, Alcohol Stove, Storage Area, Refrigerator), S/S Port Windows, Flush-Mount Offshore Compass, 110V Shorepower, 120VAC/12VDC Electrical Panel, Engine & Electric Hot Water System, Automatic Bilge Pump, Bilge Blower, Pressurized Fresh Water System, Custom Engine Compartment Ventilation, Deluxe Instrumentation, Horn (electric), AM/FM Cassette Stereo System with Weatherband, Power Trim Dual Cabin Lights, Cockpit Lighting, Bow & Stern Lights, 110 Volt / 30 Amp Charging & Inverter System, Trim Tabs.



L.O.A.	26'11"
Hull Length	25'7"
Beam	10'2"
Weight (less engine)	4850 lbs.
Fuel capacity	75 gal.
Water Capacity	24 gal.
Transom angle	15°
Deadrise	20°



# SVF 268

L.O.A.	29'
Hull Length	25'7"
Beam	10'2"
Weight (less engine)	4200 lbs.
Fuel capacity	210 gal.
Fresh Water Capacity	30 gal.
Transom angle	15°
Deadrise	20°



There are times when fishing can be very demanding. The SVF 268, tested brutally in the harshness of the open sea, met all those demands before it was ever introduced.

The hull design, proven in the high performance arena, gives the control and durability to face the unpredictable conditions of the sea.

A self-bailing cockpit with fresh water wash-down, an aerated live well and insulated fish boxes with built in cutting board are all standard.

The cabin easily converts from a two-person berth into a complete galley with a 2-burner stove, portable head and sink.

On your next fishing trip, take the fishing boat able to meet all your demands - the SVF 268.

**STANDARD EQUIPMENT:** Hand-laid 24 oz. Woven Rovings, Box Beam Stringer Construction, Molded In Transom Platform, Oil Tank Storage, S/S Bow and Stern Eyes, S/S Lifting Ring, Self-Bailing Cockpit w/ Non-Skid Sole, Live Well (Approx. 25 gal.), Tournament Aeration System, (4) Gunwale Mounted Rod Holders, Rod Storage in Cabin and Cockpit, Leaning Posts w/ Rod Holders, Hard Top 4-Rod Holder, Built-in Toe Hold Reces-ses, Bait Station & Cutting Board, (2) 200 qt. Insulated Fish Boxes w/ Drains, Insulated Ice & Bait Cooler 180 qt. w/ drain, Molded Bow Pulpit, Anchor and Anchorline Storage, Walk-Thru Transom Door, Anodized Welded Aluminum Bow Rails, Anodized Aluminum Top Frame, S/S Bow Cleat, S/S Stern Cleats with Hawse pipes, (2) S/S Spring Line Cleats, Curved Tinted Windshield, Grab Rails on Console, Padded Cockpit Bolsters, Cabin Cushions, Portable Head, Cabin Sink, Cabin Table, Plexiglass Cabin Door, Cushions for Front Fish Boxes (pr.), 2 Burner Alcohol Stove, Hydraulic Steering w/ Destroyer Wheel, (2) Automatic Bilge Pumps, Pressurized Fresh Water System, Bronze Raw Water Pickup, Pressurized System for Raw Water, Wash Down & Live Well, Bronze Sea Cocks, Dual Fuel Lines Pickups, Dual Battery Hold Downs, Cockpit & Rod Locker Lighting, Large Flush Mounted Compass, Fiberglass Console with Built In Electronics Box, Fiberglass T-Top w/ Electronics Box, International Running and Anchor Lights, Horn (electric), Hour Meter, Fuel Gauge, (2) Volt Meters, Cabin Master Switch, Electronics Master Switch.



# SVC 200

This award winning beauty has been performance perfected from bow to stern. A long low deck, swept back windshield and cleanly sculptured lines are consistent with the strength of its character.

The sundeck interior is standard in this sleek model. Sport bucket seats that swivel and slide, a full bench seat and vividly colored sundeck, seems only natural to this performer. Twin teak swim platforms, stainless steel ski pole, easily visible instrument panel with VDO gauges, and an AM/FM cassette stereo are just a few of the small details that come standard.

With up to 260 available horses, the 200 is built for power. Power that can easily reach 60 mph.

**STANDARD EQUIPMENT:** NMMA Certification, S/S Stern Rail, Twin Teak Swim Platforms, Custom Engine Compartment Ventilation, Deluxe Instrumentation, Wraparound Tempered Safety Glass Windshield, Adjustable Side Vent Windows, S/S Ski Tow Ring, Bilge Blower, Automatic Bilge Pump, Horn (electric), Teak Step Pads, In-Floor Insulated Ice Chest, Translucent Deck Hatch, Ultraviolet / Mildew & Scuff Resistant Vinyls, All Weather Marine Carpet, Side Storage Panels, Sport Bucket Seats w/ Swivel & Slide, Sport Steering Wheel, Power Trim, Conveniently Mounted Drink Holders, Dual Cabin Lights, Cockpit Lighting, Engine Compartment Lighting, Bow & Stern Lights, V-berth Cushions, Rear Boarding Step, S/S Cleats, S/S Bow Lifting ring, S/S Bow & Stern Eyes, Deluxe XLS Sundeck Interior.



L.O.A.	19'3"
Beam	9'3"
Weight (less engine)	1523 lbs.
Fuel capacity	37 gal.
Transom angle	15°
Deadrise	20°







L.O.A.	21'8"
Beam	96"
Weight (less engine)	2043 lbs.
Fuel capacity	42 gal.
Transom angle	15°
Deadrise	20°



The SVC 222 can be defined as boating in its purest form. The hull design guarantees a smooth dry, quick planing ride with unbelievable handling.

A raised foredeck provides room for a large 8 foot v-berth and portable head - a feature not found in other sportboats of comparable size. Standard twin teak swim platforms and teak trim gives this model a classic look that makes it timeless.

The sundeck interior is standard, providing sport bucket seats that swivel and slide, a full width bench seat with storage beneath, and a large padded sundeck. A curved tinted windshield made of safety glass has side panels complete with adjustable side vents.

Pure boating thrills and pure boating beauty - that's the SVC 222.

**STANDARD EQUIPMENT:** NMMA Certification, Twin Teak Swim Platforms, Custom Engine Compartment Ventilation, Deluxe Instrumentation, Wraparound Tempered Safety Glass Windshield, Adjustable Side Vent Windows, Bilge Blower, Automatic Bilge Pump, Horn (electric), Teak Step Pads, In-Floor Insulated Ice Chest, Translucent Deck Hatch, Ultraviolet / Mildew & Scuff Resistant Vinyls, All Weather Marine Carpet, Side Storage Panels, Sport Bucket Seats w/ Swivel & Slide, Sport Steering Wheel, Power Trim, Conveniently Mounted Drink Holders, Dual Cabin Lights, Cockpit Lighting, Engine Compartment Lighting, Bow & Stern Lights, V-berth cushions, Rear Boarding Step, Teak & Plexiglass Bi-fold Cabin Doors (Lockable), S/S Bow & Stern Rail, S/S Ski Tow Ring, S/S Cleats, S/S Bow Lifting ring, S/S Bow & Stern Eyes, Deluxe XL Sundeck Interior.



# SVB 230

High performance no longer means limited space. The new SVB 230 has taken advantage of high performance models and created an open-bow that allows you maximum capacity.

The open bow area has an innovative design that contours and cradles passengers for hours of comfortable riding. Specially designed sport bucket seats have lateral support to keep you comfortable in the most severe waters. A large sundeck, integrated swim platform, AM/FM cassette stereo and a large in-floor ice chest make entertaining a pleasure.

As for performance, the SVB 230 is designed to handle power. With as much as 365 available horsepower it can easily attain speeds in the mid 60's. It's smoothness and control can be attributed to it's deep-v hull and many hours of on-the-water testing.

So take the whole gang for a ride, they won't forget it in the SVB 230.

**STANDARD EQUIPMENT:** Hand Laid 24 oz. Woven Rovings, Full Foam Flotation, Molded In Transom Boarding Platform w/ Ladder, NMMA Certification, Wraparound and Walk Thru Windshield, Complete Stainless Steel Package (Rails, Cleats, Stern & Boweyes, Ski Tow Ring, Bow Lifting Ring) Stainless Steel Upholstery Fasteners, Bow Storage, In-Floor Storage, In-Floor Insulated Ice Chest, Mildew / Ultraviolet & Scuff Resistant Vinyls, All Weather Marine Carpet, Side Storage Panels, Sport Steering Wheel, Conveniently Mounted Drink Holders, Deluxe XL Sundeck Interior (Sport Bucket Seats, Rear bench Seat w/ Storage Beneath, Gas Cylinder Assisted Engine Cover w/ Sundeck, Engine Compartment Storage) Custom Engine Compartment Ventilation, Deluxe Instrumentation, Bilge Blower, Automatic Bilge Pump, Horn (electric), AM/FM Cassette Stereo System, Backlit Instrument Panel, Power Trim In Control Box Handle, Cockpit Lighting, Engine Compartment Lighting, Bow & Stern Lights.



L.O.A.	22' 8"
Hull Length	21' 8"
Beam	96"
Weight (less engine)	2073 lbs.
Fuel capacity	42 gal.
Transom angle	15°
Deadrise	20°



# SVC 235

L.O.A.	22'8"
Hull Length	21'8"
Beam	96"
Weight (less engine)	2073 lbs.
Fuel capacity	42 gal.
Transom angle	15°
Deadrise	20°



From stem to stern, the SVC 235 gives a whole new meaning to "high performance". A proven hull design gives the engine its highest capacity for speed and control. Its ability to handle well under the most crucial circumstances will prove itself time and time again.

Instrumentation is on a low-glare pod with molded-in gauges and easy to read controls. A lockable plexiglass door gives access to a cabin designed to comfortably sleep two. A full size translucent deck hatch and portable head are just a few of the details that come standard with the SVC 235.

The deck design is an innovative eye-opener with its wraparound glass windshield joining a stylish fin that descends to the integrated swim platform.

Learn what high performance is all about. Check out the SVC 235.

**STANDARD EQUIPMENT:** Hand Laid 24 oz. Woven Roving, Full Foam Flotation, Molded In Transom Boarding Platform w/ Ladder, NMMA Certification, Wraparound Tempered Safety Glass Windshield, Complete Stainless Steel Package (Rails, Cleats, Stern & Boweyes, Ski Tow Ring, Bow Lifting Ring) Stainless Steel Upholstery Fasteners, In-floor Insulated Ice Chest, Midew / Ultraviolet & Sulfur Resistant Vinyls, All Weather Marine Carpet, Side Storage Panels, Sport Steering Wheel, Conveniently Mounted Drink Holders, Deluxe XI Sundeck Interior (Sport Bucket Seats, Rear Bench Seat w/ Storage Beneath, Gas Cylinder Assisted Engine Cover w/ Sundeck, Engine Compartment Storage), Custom Engine Compartment Ventilation, Deluxe Instrumentation, Bilge Blower, Automatic Bilge Pump, Horn (electric), AM/FM Cassette Stereo System, Backlit Instrument Panel, Power Trim In Control Box Handle, Cockpit Lighting, Engine Compartment Lighting, Bow & Stern Lights, Full Size Translucent Deck Hatch, Porta Potti, Glove Box, Cabin Lighting, Swim Platform Boarding Lights.



# SVC 275

It took two painstaking years to complete Stingray's legendary SVC 275. National magazines continually compare it with our competitors' over-30 foot offshore models.

As in race boats, the bottom of the SVC 275 was fine tuned to produce optimum control and maximum speed. Drop-bottom bolster seats, tilt steering, VDO instrumentation and safety kill switch immediately tell you that this boat was built for action.

The large cabin area is, in a word, spectacular. A 7' forward berth, two facing sofas that together fold to make a 6'2" bed, stainless steel sink, wet bar, 25 qt. cooler, digital AM/FM cassette stereo and concealed portable head are all combined into a layout that must be seen to be believed.

The SVC 275. The perfect balance between superb performance and lavish comfort.

**STANDARD EQUIPMENT:** Hand Laid 24 oz. Woven Rovings, Molded In Transom Boarding Platform w/ Boarding Lights, Two Tone Hull Color, S/S Bow & Stern Eyes, S/S Rails, S/S Ski Tow ring, S/S Cleats, S/S Bow Lifting Ring, Self Bailing Cockpit, Non-Skid Cockpit Sole, Forward Storage Locker, Porta-Potti, 7' Forward V-Berth, 6'2" Sofa Bed, Ultraviolet/ Mildew & Souff Resistant Vinyls, All Weather Marine Carpet, Conveniently mounted Drink Holders, Ash Tray, S/S Sink, 25 qt. Cooler, Deck Hatch w/ Screen, S/S Port Windows w/ Screens, Drop Bolster Seats, Sliding Smoked Plexiglass Cabin Door (lockable), Custom Engine Compartment Ventilation, Deluxe Instrumentation, (2) Battery Boxes, (2) Blige Blowers, (2) Automatic Blige Pumps, Horn (electric), AM/FM Cassette Stereo w/ Weatherband System, Morse Control Box, Cockpit Lighting, Dual Engine Compartment Lighting, Bow & Stern Lights, Motorized Engine Hatch, Hydraulic Trim Tabs, Parallel Start Switch, Cabin Master Switch, Flush-Mount Offshore Compass, Safety Kill Switches, Tilt Steering Wheel, Dual Power Steering Pumps, Sport Steering Wheel, Curved Safety Glass Windshield.



L.O.A.	26'11"
Hull Length	25'7"
Beam	10'2"
Weight (less engine)	4250 lbs.
Fuel capacity	125 gal.
Transom angle	15°
Deadrise	20°



## Options/ Features



A



B



C



E



D



F



G



H



I

- A. Lockable Glove Box
- B. Port Windows
- C. Translucent Deck Hatch
- D. Integrated Swim Platform
- E. Canvas Set - Mooring Cover (Shown), Top, Side Curtains, Aft Curtains, Cockpit Cover, Bow Cover, Walk Thru Flap
- F. Back-to-Back Sleeper Lounge Seat
- G. Curved Safety Glass Windshield
- H. Full Analog Instrumented Dash & Sport Steering Wheel
- I. XL Sundeck Interior



[illegible]



## Power Options

	536zp	537zp	596zp	597zp	SVB 198	SVC 199	SVC 200	656zp	657zp	SVC 210	SVC 222	SVB 230	SVC 235	SVC 270	SVC 275
3.0L 125 hp	44 CN	45 CN	42 CN	42 CN	41 BN	41 B									
3.0LX 145 hp	47 DO	48 DO	46 CN	46 CN	45 CN	45 CN		44 CN	44 CN						
4.3L 175 hp	51 DO	52 DO	50 CO	50 CO	47 CO	47 CO	47 CO	47 CO	47 CO	46 BN					
5.0L 200 hp			53 CO	53 CO	49 CN	49 CN	52 CO	50 CN	51 CN	49 BN	51 BN	50 BN	50 BN		
5.7L 260 hp							57 CO	56 CO	57 CO	54 CO	56 CO	56 CO	57 CO	38 E	
350MAG 270 hp								57 CO			58 CP	57 CP	58 CQ	39 E	45 B
7.4L 330 hp											63 DH	62 DH	63 DH	42 E	50 CG
454 MAG 365 hp											68 DH		68 DH		55 I
350 MAG Twin 270 hp															64 HH
7.4L Twin 330 hp															69 HI
454 MAG Twin 365 hp															74 JK

Speeds with Suggested Propellor  
Suggested Propellor

Optional Propellor  
Suggested Power (For general boating purposes)

### PROPELLOR KEY

Code	Rotation	Material	Description	Diameter	Pitch	PartNumber
B	(RH)	ALUM	QUICKSILVER	14"	19"	48-78120A40
C	(RH)	ALUM	QUICKSILVER	13 3/4"	21"	48-78122A40
D	(RH)	ALUM	QUICKSILVER	13 1/2"	23"	48-78124A40
E	(RH)	ALUM	QUICKSILVER	16"	16"	48-16440A40
G	(RH)	S STEEL	MIRAGE	14 3/4"	21"	48-13702A41
H	(RH)	S STEEL	MIRAGE	14 5/8"	23"	48-13704A41
I	(LH)	S STEEL	MIRAGE	14 5/8"	23"	48-13705A41
J	(RH)	S STEEL	MIRAGE	14 1/2"	25"	48-13706A41
K	(LH)	S STEEL	MIRAGE	14 1/2"	25"	48-13707A41
N	(RH)	S STEEL	TURBO I	14 1/4"	20"	M20LH
O	(RH)	S STEEL	TURBO I	14 1/4"	22"	M22LH
P	(RH)	S STEEL	TURBO LD	14 1/2"	21"	M21LD
Q	(RH)	S STEEL	TURBO LD	14 1/2"	23"	M23LD

Specifications are subject to change at any time without notice or obligation.

To avoid disappointment at the time of purchase please check with your Stingray Dealer for current information and specifications.

Boat speeds shown are averages of several tests and were performed with MerCruiser Sterndrive Power at sea level. All boat speeds and propellers shown are to be used as guidelines only for general applications as boats and operating conditions will vary. The best propeller for specific boating needs can only be determined by performance testing by your dealer. Results on individual boats may vary depending on many factors, including driver, weather, altitude, load and the condition of propeller, lower unit and boat bottom. Matching of your boat and use conditions to the proper propeller by your dealer will make your boating experience more enjoyable and keep your engine running longer and stronger.

**CAUTION:** Never exceed engine manufacturers recommended RPM.

## Actionwear

*Get in on the Action!*

1990 boasts a new line of Stingray Actionwear as well as a new line of boats. Designed especially for the Stingray enthusiast, these fashions and accessories are sure attention getters.

The new Actionwear line includes:

- T-Shirts
- Shirts
- Jackets
- Sweaters
- Hats & Visors
- Beach Towel
- Insulated Drink Holders
- Sunglasses
- Custom Embroidery

For the '90 Actionwear Brochure see your nearest dealer, or write  
Stingray Boat Company  
Actionwear Dept.  
P.O. Box 669  
Hartsville, South Carolina 29550







## YOUR STINGRAY DEALER



## WARRANTY INFORMATION

All Stingray warranties are limited warranties within the meaning of Title 1 of the Federal Trade Commission Improvement Act. A full statement of coverage, terms and conditions applying to the Stingray warranty has been furnished to all Stingray dealers. In addition, information is supplied with each new Stingray boat.

This brochure shows only a partial list of standard equipment and some boats are shown with optional accessories. To avoid disappointment, please check with your Stingray dealer for current information and specifications at the time of purchase. Any variations in colors shown are due to reproduction variations in the printing process. Styling, design, equipment, prices, colors, and construction are subject to change without notice or obligation.



# STINGRAY

EAST RAILROAD AVENUE  
P.O. BOX 669  
HARTSVILLE, SC 29550  
PHONE: (803)383-4507