



# STINGRAY

1991



# Stingray style is your style.



*Ergonomics, the science of comfort, is coupled with 3-D design capabilities to give Stingray the advantage in luxury, functionality and style.*

The boat you own is a signature of the finer things you enjoy in life. Stingray's timeless style and inherent beauty compels a second glance, while superb performance sometimes makes that second glance difficult. Whether this is your first boat or one of many, Stingray's goal is to keep boating your number one recreation.

**Stingray builds superior sportboats, cruisers, and runabouts in a size to suit you.**

The Stingray name says value. Every Stingray boat

*From 17 to 28 feet,  
Stingray provides a  
wide variety of  
models without  
compromising quality.*

*The new "zp" series boasts a hull design that is nothing less than revolutionary. By increasing efficiency with a notched transom and specially designed strakes, the z-plane hull enjoys superior speeds and remarkable agility.*

is built in the U.S. of high quality materials and components. All Models have: A full curved glass windshield with anodized aluminum frame; Stainless steel hull and deck hardware; power trim; integrated swim platform with stainless steel boarding ladder and grab rails; NMMA certification; hand laid fiberglass hull and deck; flotation foam; polypropylene seat cores (instead of wood); high density urethane seating foams; tough vinyl upholstery, without wrinkles or tucks to trap moisture and dirt; color fast accent striping; and high tech computer assistance from concept to completed product. Quality and value stand up to time and maintain Stingray's exceptionally high resale price.

Every surface and volume of a Stingray model has a useful purpose. Computer Aided Design (CAD) allows Stingray to



# zp

All wood parts are cut using a computer controlled router, accurate to .001", guaranteeing quality down to the smallest detail in every Stingray produced.

include features in a boat and make the features conveniently usable. Within Stingray's design computers there are not only boats but people, computer people

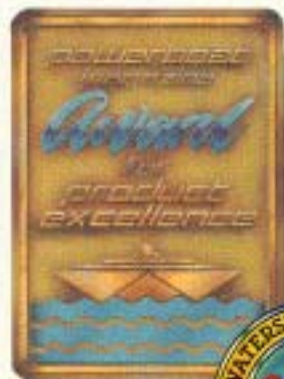


with elbows, knees, eyes, and heads. Using this tool Stingray's designers can place people in the boat, making use of an intended feature, and tailor the boat around that person. Only then does the designer know there's ample headroom, controls can all be reached, gauges can be seen, etc. Stingray's designers know well before the model is ever built that if you can sit somewhere there's head room, and if you must reach something there's elbow room.

Evolution and revolution over countless hours of testing have produced the Z-Plane Hull. The patent pending ZP hull series has performed exceptionally well for our test team as well as several magazine test teams, so you can feel confident it will work for you.

*"Starting with a clean computer screen, Stingray's engineering staff went to work blending the company's extensive performance know-how with some provocative new theories in V-bottom hull design. The result is one of the best running, most efficient 19 foot bowriders we've tested"*

- Powerboat Magazine



The ZP hull series has proven itself to be agile and efficient with an excellent "feel" that must be experienced.

*"I could've spent the whole afternoon weaving my way across the lake - the cornering stability was that enticing."*

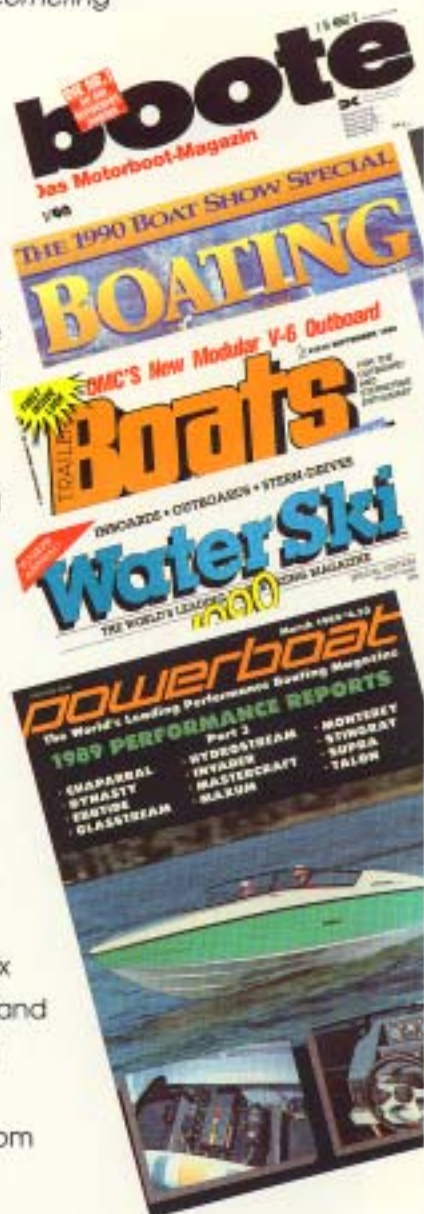
- Bob Nordskog,  
Powerboat Magazine

Stingray Boat Company is based in Hartsville, S.C., a small southern town where Stingray started producing boats in 1979. The plant is clean and efficient and employs most of its original employees to this day. Peerless use of modern robotic and computer technologies allows Stingray's boat builders more time to attend to detail and quality.

Beyond this page lie four innovative cruisers, five aggressive sportboats, six high-spirited runabouts, and a rock solid sportfish. All honored with Stingray's commitment to detail from design to delivery.

Welcome to the world of Stingray!

Regular features and performance awards in leading boating magazines testify to Stingray's superior standards of construction and performance.



**536zp****537zp**

**"This recreational stern-drive [536zp] appropriately earns our Family Ski Boat Seal of Approval, and some of its performance statistics actually exceed the standards required for that range."**

- *Waterski Magazine*

The 536zp and 537zp, pioneers of the "zp" hull design, perfectly melds practicality, performance, and comfort. With the advent of computer design, every form and function has been meticulously engineered.

*Waterski Magazine* noted that the 536zp has an "exceptionally well-designed interior for a 17-and-a-half-foot bowrider." Standard interior includes a padded motorbox with built-in drink holders, rear jump seats, a back-to-back sleeper lounge on the passenger side, and a swivel bucket seat at the helm. The optional interior offers two swivel bucket seats, a full-width bench seat and a generous sunpad. Both interior arrangements are exceptionally deep and offer plenty of storage, an in-floor skilocker, top storage, and a 46 quart in-floor cooler.

All stainless steel hardware, integrated swim platform with boarding ladder, and a curved glass windshield couple with "zp" performance to easily separate these models from all contenders.

**536zp**

536zp I.C.A. 5.3m (17'5")  
537zp I.C.A. 5.3m (17'5")

**537zp**

The 590 series (19'5") is an excellent combination of good size, great hull and beautiful interior layout. Its deep, wide cockpit feels very secure and the instrument panel is perfectly laid out in a non-glare enclosure. On-the-water performance holds to high standards of quality engineering. The transom is notched, as in offshore racing boats, allowing the engine to be mounted a bit higher. This creates less drag and higher speeds, without compromising cornering agility.

From the cleats to the rails, all hardware is stainless steel, installed with stainless steel screws into areas reinforced with glassed-in backing plates.

Bob Nordskog, editor of *Powerboat Magazine*, said, "I could've spent the whole afternoon weaving my way across the lake - the cornering stability was that enticing." *Waterski Magazine* agreed by pointing out that it produced a "smooth, quiet ride and excellent handling, especially around the dock".

596zp

597zp

*"Stingray's engineering staff went to work blending the company's extensive performance know-how with some provocative new theories in V-bottom hull design. The result is one of the best running, most efficient 19 foot bowriders we've tested."*

- *Powerboat Magazine*

596zp



596zp L.O.A.	5.9m (19'5")
597zp L.O.A.	5.9m (19'5")



597zp



**656zp****657zp**

*"The Z-hull does its job of mashing wakes and chop to provide an above-average ride".*

- Waterski Magazine

These models help make having friends on board a pleasure. The 656zp and 657zp offer the same performance advantages of the smaller 'zp' models, with a maximum amount of space.

The open-bow 656 boasts a molded-in bow section with padded bow seating, bow side panels and ample storage. On the other hand, the 657zp has a spacious cabin that is accessible through a dash hatch that seconds as a step aloft.

Standard AM/FM cassette stereo, integrated swim platform and in-floor ice chest are guarantees for a successful outing - no matter what your water sport.

Ergonomics has been used for years in the automotive and furniture industry to determine proper proportions for maximum comfort. Stingray cockpits and interiors are fine examples of ergonomic layout and design allowing a high level of functional efficiency. All this combined with the revolutionary 'zp' hull is sure to make your next excursion one to remember.

**656zp**

656zp L.O.A.	6.5m (21'5")
657zp L.O.A.	6.5m (21'5")

**657zp**

Using the same superior Z-Plane hulls as the runabouts and sportboats, Stingray has produced two cruisers with weekend amenities. The 599 (5.9m, 19'5") and the 659 (6.9m, 21'5") are smart, trailerable second homes.

The cockpit seating, whether standard or optional XL layout, is constructed of polypropylene cores - not wood - supporting high quality foams and vinyls. Stingray builds its seating to last as long as its hull.

The decks and hulls are built around an extremely space efficient interior of low maintenance fiberglass. The cabin will sit two 6'3" men comfortably while they cook at a full galley! A recessed alcohol stove with cutting board, a sink with three gallon water tank and formica countertop are all easily cleaned, and concealed until you need it. Rearrange the cushions and in a matter of seconds you have sleeping quarters for two.

599zp / 659 zp

*"Stingray intentionally keeps the hull graphics simple and straightforward for a high class, elegant look."*

- Powerboat Magazine



599zp

599zp L.O.A.	5.9m (19'5")
659zp L.O.A.	6.5m (21'5")



659zp



# 719zp

***"Stingray believes in staying abreast of new developments and implementing that technology wherever it can."***

*- Powerboat Magazine*

This 23'6" (7.1 meter) cruiser provides excellent performance with creature comforts of a much larger cruiser, all in a trailerable package.

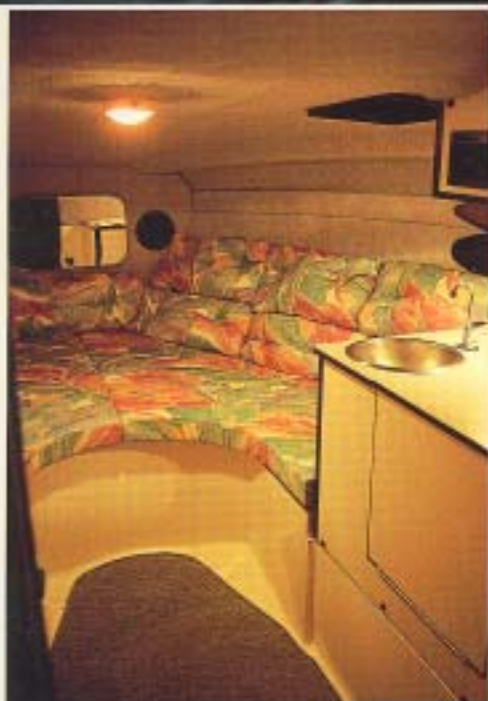
The walk around deck leads to bow anchor storage and a forward sun pad. A curved glass windshield and a low profile deck complement the lines of the z-plane hull. The cockpit sports two swivel bucket seats and a picnic table. A full width bench seat converts to a large double bed for lounging in the sun or comfortable overnight stays. The low-glare dash panel offers an unobstructed view of the gauges and provides an accessory panel for additional electronics.

Below, the cabin boasts a fully enclosed head with vanity, a galley, and dinette seating for four with plenty of headroom. Two hatches and four screened windows provide ventilation.

For weekend cruising or marina hopping, the 719 is ideal.



L.O.A. 7.1m (23'6")





Based on the same successful hull design as our sportboat, the 829 is a showcase of Stingray's attention to detail in design and construction. It's a trailerable second home with luxury features at an affordable price.

The 829svc is Stingray's largest cruiser in the 1991 lineup. The cockpit has a straight-forward layout that guarantees plenty of room. The helmseat can accommodate three and as many as five can sit comfortably on the L-settee aft. The walkthrough transom makes entertaining easy.

The cabin area is nothing less than ingenious. The layout accommodates a large dinette area that can convert to an extra-large double V-berth. A galley, with full standing headroom, is complete with stainless steel sink, two burner alcohol stove with a cutting board cover, and refrigerator. A fully enclosed stand up head has a sink, vanity, and handheld shower. To finish it off, the aft cabin has a second double bed with sitting headroom.

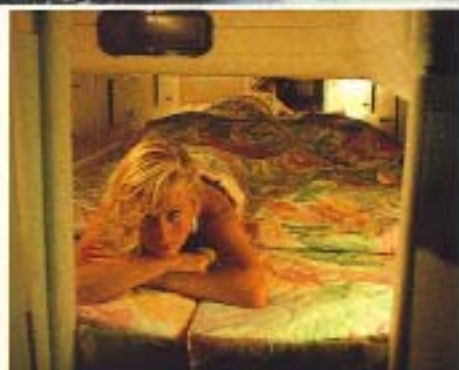
829svc

*"Stingray already has a reputation for producing well-made boats that are good performers. But the new, sporty-looking Stingray 829svc is revolutionary in terms of an ingenious use of space which makes it an extremely versatile, all-around family cruiser."*

*-Motor Boating & Sailing*



LOA 5.2m (26'11")



Curved, Tinted Safety  
Glass Windshield  
with Walk-thru &  
Side Vent Windows

Alcohol Stove  
with Cutting Board

Ergonomically Designed  
Instrument Panel  
**M & G ELECTRONICS**

Full Size Translucent Deck Hatch

Fold Down  
Deck Access  
Ladder

Stainless Bow Rails

Stainless Cleats  
**ATTWOOD**

Die-cast Rubrail Cap

Fast, Efficient, Z-plane Hull  
(Patent Pending)

Stainless Bow & Stern Eyes  
**EPCO PRODUCTS, INC.**

Molded Cabin Liner

Molded Sink with Overboard Drain

Portable Marine Head  
**THETFORD CORPORATION**

Lockable  
Plexiglass  
Cabin Doors

Polypropylene Seat Frames  
Adjustable Head Rest

46 qt. In-floor Ice Chest



# STINGRAY

Full Foam Flotation  
Adds Rigidity & Sound Deade  
**NORTH CAROLINA FOAM I**

High Output  
Digital Stereo  
**MAXXIMA**

**TELEFLEX** Steering System  
**DINO** Custom Steering Wheel

Rotating Bucket Seats  
with Fore & Aft Adjustment

Power Trim & Tilt

Storage In Side Panels, Under Rear Bench  
Seat, In Engine Compartment (On XL),  
and In Bow

Premium Marine Vinyls & Upholstery

Fold-up Storage Dividers

Concealed Engine  
Compartment Ventilation

All Weather Marine Carpet  
**SPARTA CARPETS**

Welded Stainless Steel Rails,  
Through Bolted, with Backing Plates  
**NAUTALLOY**

Stainless  
Ski Tow  
Ring

Integrated Swim Platform

Stainless Swim Ladder

High Capacity Bilge Blower  
Automatic Bilge Pump  
**ATTWOOD**

Brass Drain Plug Installed In Fiberglass  
Eliminates Water Seepage Into Wood

Fiberglass Encapsulated  
Wood Stringer System

Welded Aluminum Fuel Tank  
**KYSOR / AFP**

PVC Pipe  
Facilities  
Water Drainage

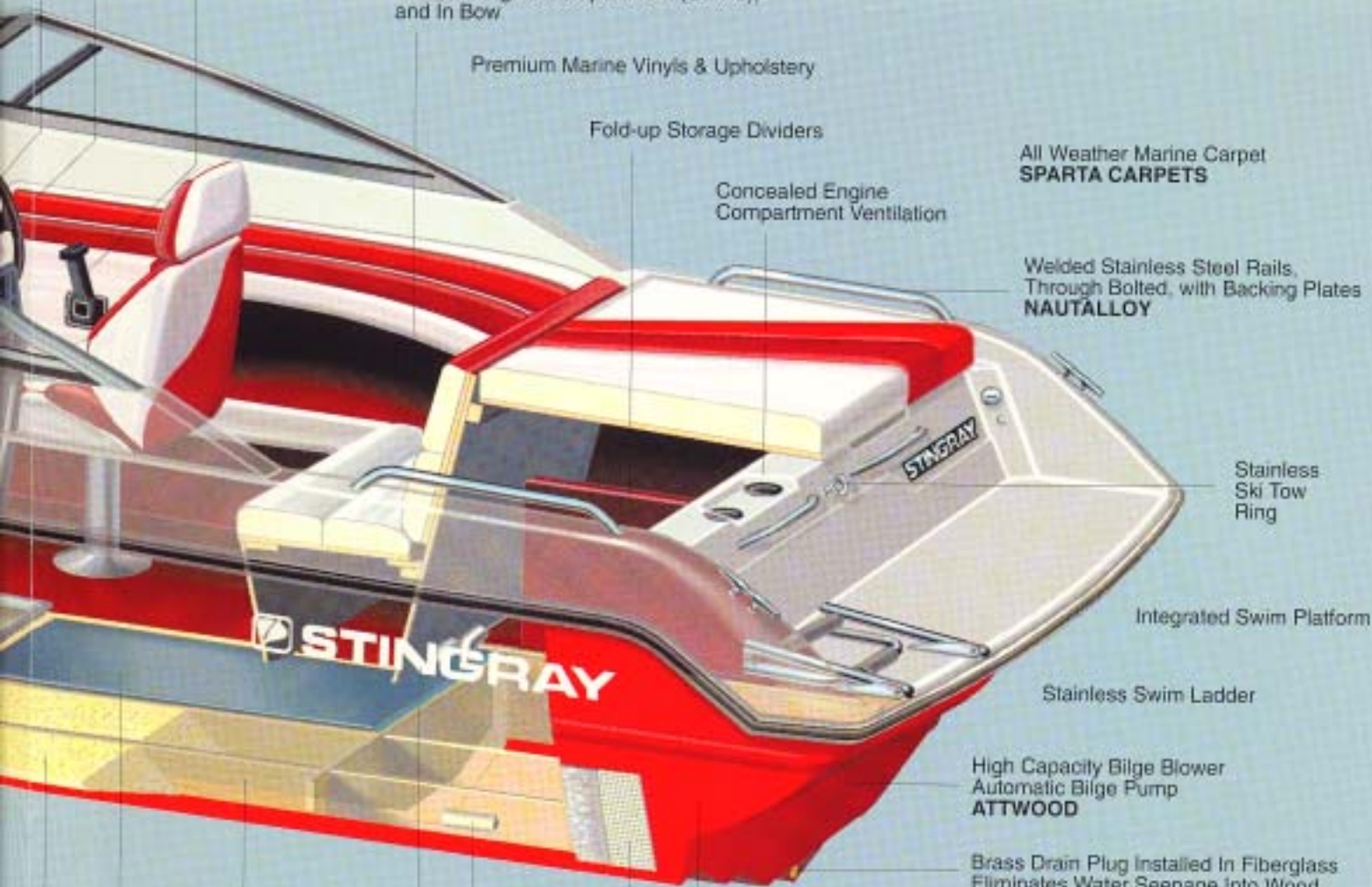
Resin by  
**ARISTECH  
CHEMICAL  
CORPORATION**

Color Coordinated Graphics  
**SPARTAN INTERNATIONAL**

Premium Gelcoat  
**COOK COMPOSITES & POLYMERS**

adening  
**M INDUSTRIES**

Hand Layup using 1.5 oz. Mat  
and 24 oz. Woven Roving



## 268svf

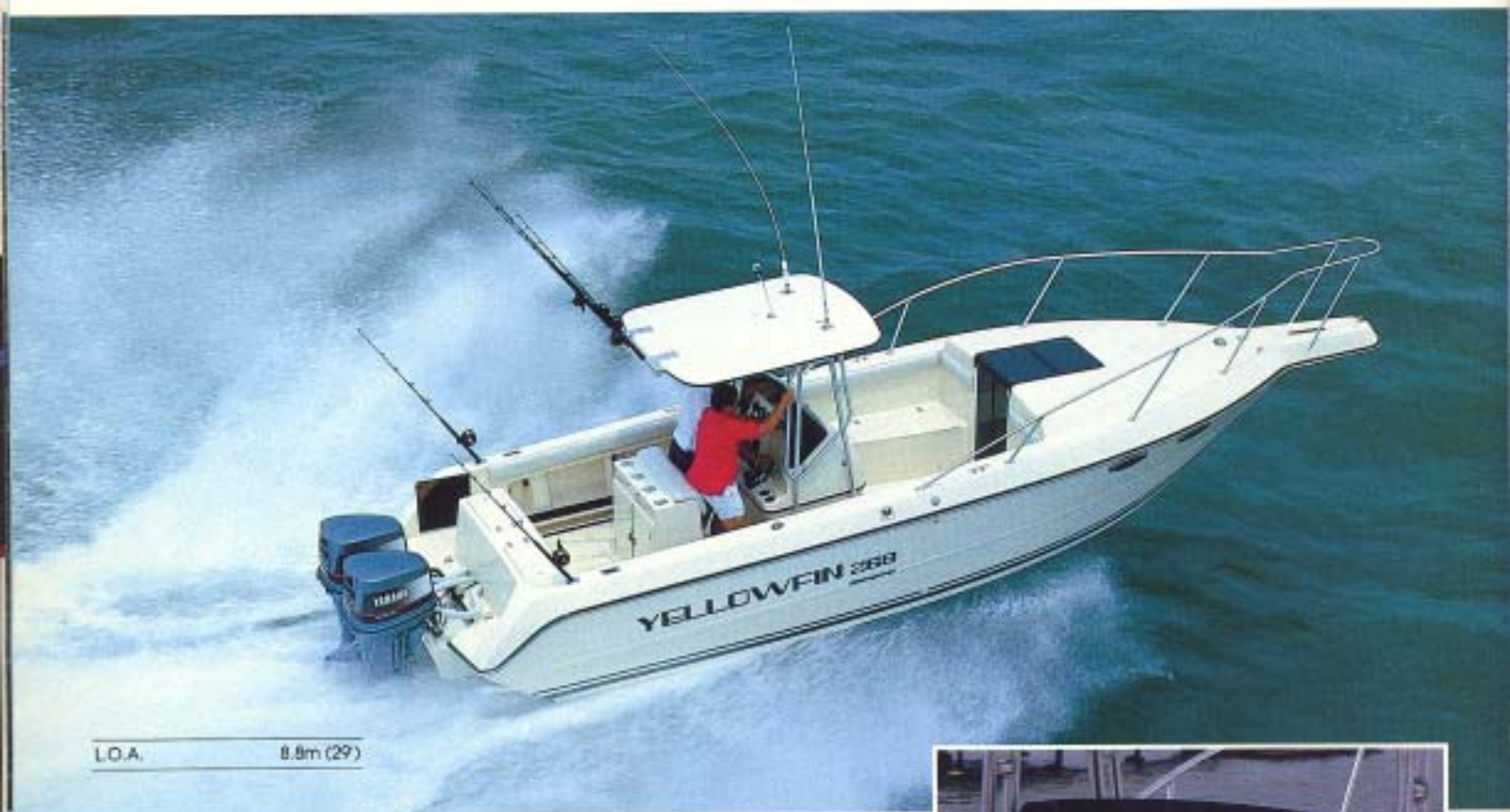
*"Had Stingray simply designed a center console, the boat would be just another fishing rig. Instead, what we have is a fully equipped, pocket-size sportfisherman with a large cuddy that leaves nothing to chance."*

- Boating Magazine

Offshore fishing is a demanding and unpredictable sport. Your fishing vessel must be able to take all the demands that the open-sea, weather, and a large catch can dish out. The 268 is comfortable and secure whether it's a beautiful sunny day or a wild 1'm only out because it's a tournament" day.

Built from the same hull as Stingray's offshore sportboat, the 268 has the substance to smooth out the lumps. With twin 200's, speeds hover at 60 MPH while the ride remains dry and smooth. For fishing, cruising, or diving, the 268 is a low maintenance high performance work and pleasure boat. A padded leaning post, circular 25-gallon livewell, walk through transom, and enough rod storage for 28 rods add the right practical touches.

Below the foredeck in the cabin area is a generous 47" headroom. A two burner alcohol stove, fiberglass sink, table, and Porta-potti are standard in the cabin that can be converted into either a sitting area or a pair of 6 1/2' V-berths.



L.O.A. 8.8m (29')



For 1991, Stingray proudly introduces the 598zp and 658zp sportboats. Based on the proven performance of the z-plane hull, these two models integrate top of the line features and components with timeless styling.

Top to bottom these boats have looks that move. A long shapely deck blended with low raked curved glass windshield demands a second glance. Bow and stern lifting eyes compliment the all stainless deck and hull hardware. The "zp" hull not only handles exceptionally well, but also has a clean, fluid look from any angle.

A closer look reveals standard swivel bucket seats, full width bench seat, sunpad, VDO Blueline gauges, and an adjustable Dino steering wheel. Beneath the foredeck lies a large cushioned v-berth for an afternoon snooze or an occasional overnight.

The 598 and 658 sportboats - shaped to leave the wind and water unstirred and a lasting impression on your mind.

## 598zp / 658zp

*"Stingray places a high premium on attention to detail, a superior finish, and the production of boats with performance characteristics that exceed others in their class."*

- Waterski Magazine

658zp



598zp

598zp L.O.A. 5.3m (17.5')

658zp L.O.A. 6.5m (21.5')



## 696svx / 698svx

*"The boats tracking, handling and turning characteristics were all exceptional. We found absolutely no peculiarities, which means to us that the 698 is a pleasure boat in the truest sense."*

- Powerboat Magazine

Sixty mile per hour speed in a bow rider demanded a second look at seat design. Hence the 696 bow rider's contoured bow seats for secure, comfortable high speed cruises. The 698 shares the 696's hull, cockpit, and low raked windshield yet adds a lockable cabin embracing a huge v-berth and concealed head.

The standard cockpit is an XL layout with two swivel bucket seats, a full width bench seat, a large sundeck and a 48 quart in floor cooler. The highlight of the cockpit is the dash, with a full compliment of oversized VDO Blueline gauges and a fitting Dino steering wheel. The matching unit on the passenger side contains a large lockable glovebox and grab rail.

The 690 series hull is built for speed. Its deep V hull with three sets of lifting strakes provides high controllable speeds, super cornering ability, and a smooth ride in all conditions. With as much as 365 horsepower, speeds will easily be in the high-60's. Grab your friends and take them for the ride of their lives!

### 698svx



696svx L.O.A. 6.9m (22'8")

698svx L.O.A. 6.9m (22'8")



### 696svx



The 828 is Stingray's 1991 flagship. It embodies everything Stingray stands for: eye-watering speed, superb handling, a space efficient cabin, and distinctive Stingray styling. The 828 has excellent performance rigged as a single 454 c.i. package or mid-seventy MPH package with twin 454s. In either case the boat's balance allows a perfect running attitude and dazzling handling. All testifying to the extensive fine-tuning that has gone into making this offshore legend.

The cabin was designed with entertaining in mind. As you pass through the smoked plexiglass door you immediately notice two facing sofas that can fold together to make a 6'2" bed. An entertainment center with a stainless steel sink, wet bar, 25 qt. cooler, digital AM/FM cassette stereo, and concealed portable head divides the sitting area from a 7' berth. *Powerboat Magazine* exclaimed that Stingray was "willing to try some new ideas in cabin design, lighting and interior appointments and its paid off with one of the best laid out sport boats we've ever seen at this length".

# 828svx

*"Stingray President Al Fink put his heart and soul into this boat and has every reason to be proud. It is a masterful machine that does everything right."*

- *Powerboat Magazine*



# Equipment Listing



Dash with full-instrumentation, tilt steering and Dino® custom steering wheel



XL Sundeck Interior

Canvas Set

S = STANDARD EQUIPMENT

O = OPTIONAL EQUIPMENT

OPTION ORDER NUMBER

		FISH		OPEN BOW			CLOSED BOW			SPORT BOAT				CRUISER				
		268	536	596	656	537	597	657	598	658	696	698	TWIN 828	828	599	659	719	829
U.S. Coast Guard / NMMA Certification		S	S	S	S	S	S	S	S	S	S	S	S	S	S	S	S	S
Ergonomically Designed Instrument Panel		S	S	S	S	S	S	S	S	S	S	S	S	S	S	S	S	S
German VDO Blue Line Instruments									S	S	S	S	S					
Deluxe Teleflex International Instruments			S	S	S	S	S	S						S	S	S	S	S
Power Trim and Tilt with Indicator			S	S	S	S	S	S	S	S	S	S	S	S	S	S	S	S
Digital Depth Finder w/ Alarm	21	O	O	O	O	O	O	O	O	O	O	O	S	S	O	O	S	S
Large Lockable Glove Box		S	S	S	S	S	S	S	S	S	S			S	S		S	
High Output Digital Stereo System			S	S	S	S	S	S						S	S			
High Output Digital Stereo with Equalizer	22	O	O	O	O	O	O	O	S	S	S	S		O	O			
High Output Digital Remote Stereo with Equalizer	23												S	S	O	O	S	S
Tilt Steering									S	S	S	S	S				S	
Dino Custom Steering Wheel		S	S	S	S	S	S	S	S	S	S	S	S	S	S	S	S	S
Wraparound Tempered Safety Glass Windshield			S	S	S	S	S	S	S	S	S	S	S	S	S	S	S	S
Adjustable Side Vent Windows			S	S	S	S	S	S				S	S	S	S	S	S	S
Large Deluxe Top w/ Storage	24	S	S	S	S	S	S	S	O	O	O	O		S	S	S	S	S
Full Canvas Set	4		O	O	O	O	O	O	O	O	O	O		O	O	O	O	O
Camper Canvas	15																	O
Side Curtains	16		O	O	O	O	O	O	O	O	O	O		O	O	O	O	O
Aft Curtains	17		O	O	O	O	O	O	O	O	O	O		O	O	O	O	O
Bow Cover (Open-bow models)	18		O	O	O						O							
Walk-thru Flap (Open-bow Models)	14		O	O	O						O							
Cockpit Cover	13								O	O	O	O	O					
Mooring Cover	5		O	O	O	O	O	O	O	O	O	O	O	O	O	O	O	O
High Capacity Bilge Blower			S	S	S	S	S	S	S	S	S	S	S	S	S	S	S	S
Automatic & Manual Bilge Pump (500 gph)		S	S	S	S	S	S	S	S	S	S	S	S	S	S	S	S	S
Horn (electric)		S	S	S	S	S	S	S	S	S	S	S	S	S	S	S	S	S
Cockpit Lighting		S							S	S	S	S	S				S	S
Floor Storage			S	S	S	S	S	S		S								
Conveniently Mounted Drink Holders		S	S	S	S	S	S	S	S	S	S	S	S	S	S	S	S	S
Engine Compartment Lighting on XL Models			S	S	S	S	S	S	S	S	S	S	S	S	S	S	S	S
Sport Bucket & Lounge Seat w/ Fore & Aft Adj.			S	S	S	S	S	S						S	S			
Lounge Seat w/ Fore & Aft Adjustment (exchange)	9		O	O	O	O	O	O						O	O			
Deluxe XL Sundeck Interior	3		O	O	O	O	O	O	S	S	S	S	S	S	O	O	S	
Side Storage Panels		S	S	S	S	S	S	S	S	S	S	S		S	S	S		
Insulated Ice Chest (46 qt. or larger)		S	S	S	S	S	S	S	S	S	S	S	S	S	S	S	S	S
Lockable Cabin Doors (1/2' Plexiglass)		S										S	S	S	S	S	S	S
Bomar Full Size Translucent Deck Hatch								S	S	S	S	S	S	S	S	S	S	S
Hatch Screen Kit	10							O	O	O	O	O	O	O	O	O	O	O
Bow Access Step		S				S	S	S	S	S	S			S	S			
Molded Fiberglass Cabin Liner		S												S	S	S	S	S
Freshwater Sink		S										S	S	S	S	S	S	S
Pressurized Fresh Water System		S															S	S
V-Berth Cushions		S				S	S	S	S	S	S	S	S	S	S	S	S	S
Dual Cabin Lights		S						S	S	S	S	S	S	S	S	S	S	S
Opening Cabin Windows with Screen		S										S	S				S	S
Stainless Steel Port Window	20											O			O			
Integrated Swim Platform w/ S/S Ladder			S	S	S	S	S	S	S	S	S	S		S	S	S	S	S





Back-to-back Sleeper Lounge Seat



Lockable Glove Box



Bow Storage

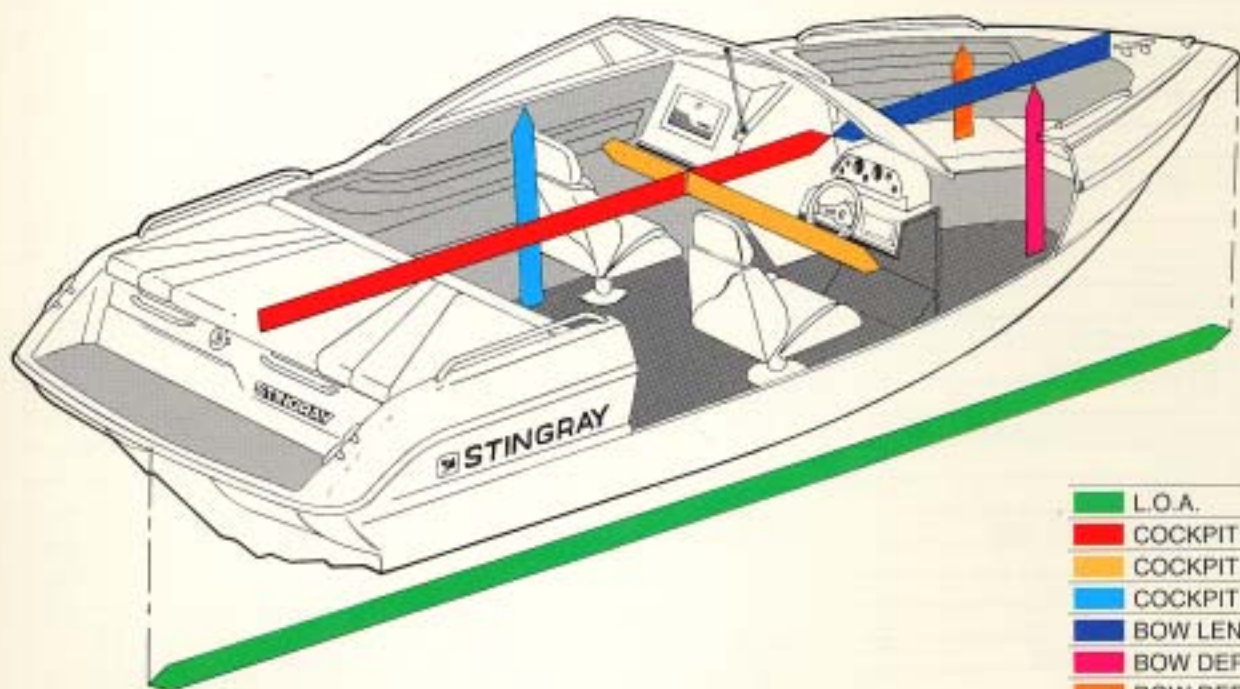
S = STANDARD EQUIPMENT  
O = OPTIONAL EQUIPMENT

OPTION ORDER NUMBER	▼	FISH		OPEN BOW			CLOSED BOW			SPORT BOAT					CRUISER				
		268	536	596	656	537	597	657	598	658	696	698	TWIN	828	599	659	719	829	
Stainless Steel Deluxe 2-step Ladder	6	O	O	O	O	O	O	O	O	O	O	O	O	O	O	O	O	S	S
Stainless Steel Thru Hull Exhaust	11			O	O		O	O	O	O	O	O	O						
Stainless Steel Thru Hull Exhaust w/ Silencer	12				O		O	O	O	O	O	O	O						
Stainless Steel Stern Rails (Welded)			S	S	S	S	S	S	S	S	S	S	S	S	S	S	S	S	S
Stainless Steel Bow Rail (Welded)			S	S	S	S	S	S						S	S	S	S	S	
Stainless Steel Ski Tow Ring			S	S	S	S	S	S	S	S	S	S	S	S	S	S	S	S	
Stainless Steel Bow Lights		S	S	S	S	S	S	S	S	S	S	S	S	S	S	S	S	S	
Stainless Steel Cleats		S	S	S	S	S	S	S	S	S	S	S	S	S	S	S	S	S	
Stainless Steel Bow Lifting Ring								S	S	S	S	S	S				S	S	
Stainless Steel Bow & Stern Eyes (Heavy Duty)		S	S	S	S	S	S	S	S	S	S	S	S	S	S	S	S	S	
Bow Storage		S	S	S	S					S		S	S	S	S	S	S	S	
Commercial Grade Scuff Resistant Vinyls		S	S	S	S	S	S	S	S	S	S	S	S	S	S	S	S	S	
Easy Care All Weather Marine Carpet			S	S	S	S	S	S	S	S	S	S	S	S	S	S	S	S	
Bennett Trim Tabs	7	O	O	O	O	O	O	O	O	O	O	O	O	S	O	O	O	S	
Two-tone Hull color	1		O	O	O	O	O	O	O	O	O	O	O	O	O	O	O	O	
Two-tone Deck	2								O	O	O	O	O						
Shore Power (with battery charger) GFI Outlet												S	S				S	S	
Enclosed Head																	S	S	
Shower (In Head)																		S	
Transom Shower																	S	S	
Windshield Wiper (Starboard)	25																O	O	
Porta-Potti w/ Self Contained Holding Tank		S									S	S	S	S	S	S	S	S	
Marine Head System	26																	O	
220 Volt Electrical System (export)	27											O	O				O	O	
Hot Water System	28																O	S	
Compass		S										S	S				S	S	
Bow Sunpad																	S		
Deck Walk Around		S															S	S	
Hour Meter	8	O	O	O	O	O	O	O	O	O	O	O	O	O	O	O	O	O	
Halon Fire System	19		O	O	O	O	O	O	O	O	O	O	O	O	O	O	O	O	
Pressurized System for Raw Water, Wash Down		S																	
Alcohol Stove		S												S	S	S	S		
Self-Bailing Cockpit		S										S	S				S	S	
Tournament Aeration System		S																	
(4) Leaning Post Rod Holders		S																	
Hard top 4 Rod Rocket Launcher Rod Holder		S																	
Rod Storage - 8 in Cabin, 6 in Cockpit		S																	
Heavy Duty Leaning Post		S																	
Built-in Toe Hold Recesses (Port & Starboard Side)		S																	
Bait station & cutting Board		S																	
(2) Insulated Fish Boxes 200 qt.		S																	
Insulated Ice & Bait cooler 180 qt. 5 ft. long		S																	
Molded In Fiberglass Bow Pulpit		S																	
Bow Storage for Anchor and Anchorline		S															S	S	
Walk-thru Transom Door		S																S	
Anodized Welded Aluminum Bow Rails		S																	
Hydrofoil Stabilizer	29	O	O	O	O	O	O	O	O	O	O	O	O	O	O	O	O	O	

SPECIFICATIONS ARE SUBJECT TO CHANGE WITHOUT NOTICE OR OBLIGATION

# Specifications

	FISH	OPEN BOW				CLOSED BOW			SPORT BOAT					CRUISER				
MODEL	268	536	596	656	537	597	657	598	658	696	698	828	828	599	659	719	829	
L.O.A.	motors ft. 8.8 29'	5.3 17.5'	5.9 19.5'	6.5 21.5'	5.3 17.5'	5.9 19.5'	6.5 21.5'	5.3 19.5'	6.5 21.5'	6.9 22.6'	6.9 22.8'	8.2 26.11'	8.2 26.11'	5.9 19.5'	6.5 21.5'	7.1 23.6'	8.2 26.11'	
Beam	in. cm. 102" 259	88" 224	94" 239	97" 246	88" 224	94" 239	97" 246	94" 239	97" 246	96" 244	96" 244	102" 259	102" 259	94" 239	97" 246	102" 259	102" 259	
Bridge Clearance	in. cm. 93" 236	51.5" 131	49" 124	51.5" 131	51.5" 131	49" 124	51.5" 131	51.5" 131	49" 124	51.5" 131	51.5" 131	60" 152	60" 152	53.5" 136	53.5" 136	69" 175	78" 198	
Weight (less engine)	lbs. kg. 4200 1903	1345 609	1690 761	2179 987	1290 584	1630 738	2119 960	1690 766	2160 978	2190 992	2180 988	4250 1925	4460 2020	1780 806	2270 1028	3300 1495	4850 2197	
Fuel Cap.	gal. liters 210 795	28 106	28 106	43 162.7	28 106	28 106	43 162.7	43 162.7	43 162.7	42 159	42 159	125 473	125 473	43 162.7	43 162.7	75 284	75 284	
Water Cap.	gal. liters 30 114											3 11.4	3 11.4	3 11.4	3 11.4	18 68.1	24 22.7	
Ice Box Cap.	qt. liters 580 549	46 43.5	46 43.5	46 43.5	46 43.5	46 43.5	46 43.5	46 43.5	46 43.5	46 43.5	46 43.5	25 23.6	25 23.6	46 43.5	46 43.5	48 45.4		
Max. Cap.	persons / lbs. persons / kg. 12/3400 12/1540	8/1225 8/555	8/1600 8/725	10/1950 10/883	8/1225 8/555	8/1600 8/725	14/2015 14/912	8/1550 8/702	8/1950 8/883	10/1850 10/838	8/1850 8/883	12/3400 12/1540	12/3400 12/1540	8/1600 8/725	10/1850 10/838	12/2600 12/1178	12/3400 12/1540	
Free Board	in. cm. 31" 79	27" 69	26" 66	27" 69	27" 69	28" 69	27" 69	28" 69	27" 69	24" 61	24" 61	28" 71	28" 71	27" 69	28" 71	41" 104	43" 109	
Molded Depth (W/S Base to keel)	in. cm. 70" 178	46.5" 118	48.7" 124	52" 132	46.5" 118	48.7" 124	52" 132	46" 117	49.5" 126	50" 127	50" 127	61" 155	61" 155	53.5" 136	53.5" 136	66" 168	76.5" 194	
Max. Depth (Includes W/S)	in. cm. 110 279	58.5" 149	61.5" 156	64.5" 164	58.5" 149	61.5" 156	64.5" 164	58" 147	61.5" 156	60.5" 154	60.5" 154	75" 190	75" 190	65.5" 166	66" 168	81" 206	92" 234	
Max. Draft (Drive Down)	in. cm. 34" 86	30" 76	32" 81	33" 84	30" 76	32" 81	33" 84	32" 81	33" 84	36" 91	36" 91	34" 86	34" 86	32" 81	33" 84	33" 84	38" 97	
Bow Depth (Bow - Cushion Top)	in. cm. 30.5" 77	16.2" 41	18.25" 46	20.5" 52	31.5" 80	32" 81	35.5" 90	29" 74	33" 84	15" 38	32" 81	40.5" 103	40.5" 103	28.5" 67	27" 69	37" 94	40" 102	
Bow Depth (Max.)	in. cm. 55.5" 141	34.5" 88	35.5" 90	37" 94	34.5" 88	35" 89	38.5" 98	32" 81	36" 91	34" 86	35" 89	57.5" 146	57.5" 146	49.25" 125	40.25" 102	56" 142	73.5" 187	
Bow Length (Max.)	in. cm. 80" 203	51" 130	55" 140	60" 152	60" 152	72" 183	83" 211	67" 170	84" 213	60" 152	106" 269	142" 361	142" 361	76" 193	80" 203	106" 269	136.5" 347	
Cockpit Depth (At helm)	in. cm. 36" 91	34.25" 87	35" 89	37.25" 95	34.5" 88	35" 89	37.25" 95	32" 81	35" 89	35" 89	35" 89	38" 97	38" 97	38" 97	38.75" 98	42.75" 109	40" 102	
Cockpit Width (Max. Mould)	in. cm. 82" 208	72" 183	78" 198	78" 198	72" 183	78" 198	78" 198	78" 198	78" 198	78" 198	78" 198	83" 211	83" 211	78" 198	78" 198	76" 193	79" 201	
Cockpit Length (Max. Mould)	in. cm. 164" 417	83" 211	88" 224	104" 264	83" 211	74" 188	86" 218	75" 191	75" 191	93" 236	93" 236	76" 193	76" 193	72" 183	86" 218	94" 239	108" 274	
Sleeping Cap.	2				2+1	2+1	2+1	2+1	2+1			2+1	4+1	4+1	2+1	2+1	2+2	4
Transom Angle	15°	15°	15°	15°	15°	15°	15°	15°	15°	15°	15°	15°	15°	15°	15°	15°	15°	
Deadrise Angle	20°	19°	19°	19°	19°	19°	19°	19°	19°	19°	19°	21°	21°	19°	19°	21°	21°	



- L.O.A.
- COCKPIT LENGTH
- COCKPIT WIDTH
- COCKPIT DEPTH
- BOW LENGTH
- BOW DEPTH TO FLOOR
- BOW DEPTH TO CUSHION

# Power Options/Speeds

MODEL	OPEN BOW			CLOSED BOW			SPORT BOAT						CRUISER			
	536	596	656	537	597	657	598	658	696	698	828	TWIN 828	599	659	719	829
<b>Merc. 3.0L</b> 125hp crank 115 prop 625 lbs. 283 kg.	44 CN			45 CN												
<b>Merc. 3.0LX</b> 145 hp crank 135 prop 625 lbs. 283 kg.	47 DO	46 CN	44 CN	48 DO	46 CN	44 CN	46 CN						44 CN			
<b>Merc. 4.3L</b> 175 hp crank 155 prop 802 lbs. 363 kg.	51 DO	50 CO	47 CO	52 DO	50 CO	47 CO	51 CO						48 CN	45 BN		
<b>Merc. 4.3LX</b> 205 hp crank 175 prop 802 lbs. 363 kg.		53 CO	50 CN		53 CO	51 CN	54 CO						52 CO	49 BN		
<b>Merc. 5.0L</b> 200 hp crank 180 prop 893 lbs. 406 kg.			50 CN			51 CN		52 CN	50 CN	51 CN					42 B	
<b>Merc. 5.7L</b> 260 hp crank 230 prop 907 lbs. 411 kg.			56 CO			57 CO		58 CO	56 CO	57 CO				54 CO	47 BN	39 E
<b>Merc. 350 MAG</b> 270 hp crank 240 prop 950 lbs. 430 kg.			57 CO			58 CO		60 CO	57 O	58 O	45 B	64 HH		56 CO	48 BN	40 E
<b>Merc. 7.4L</b> 330 hp crank 300 prop 1125 lbs. 510 kg.									63 DH	64 DH	50 CG	69 HI			54 CG	44 B
<b>Merc. 454 MAG</b> 365 hp crank 360 prop 1115 lbs. 505 kg.										69 DH	55 I	74 JK				
<b>VOLVO 430</b> 175 hp crank 155 prop 791 lbs. 858 kg.		49 T	47 S		49 T	47 S	49 T	48 S					48 S	45 S		
<b>VOLVO 570</b> 275 hp crank 240 prop 913 lbs. 414 kg.			57 T			57 T	59 T	59 T	57 T	58 T				56 T	48 R	42 R
<b>VOLVO 740</b> 330 hp crank 300 prop 1150 lbs. 521 kg.										62 U	50 S				54 S	46 R

■ Suggested Power

Top Speeds  
Standard Propellor

64  
HH

Optional Propellor

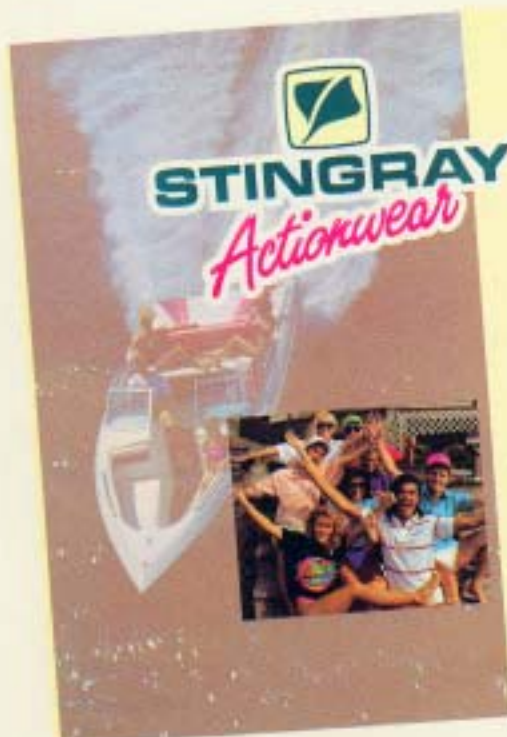
## PROPELLOR KEY

Code	Rotation	Material	Description	Diameter	Pitch	Part Number
B	(RH)	ALUM	QUICKSILVER	1/4"	19"	48-78120A40
C	(RH)	ALUM	QUICKSILVER	13 3/4"	21"	48-78122A40
D	(RH)	ALUM	QUICKSILVER	13 1/2"	23"	48-78124A40
E	(RH)	ALUM	QUICKSILVER	16"	16"	48-16440A40
G	(RH)	S. STEEL	MIRAGE	14 3/4"	21"	48-13702A41
H	(RH)	S. STEEL	MIRAGE	14 5/8"	23"	48-13704A41
I	(LH)	S. STEEL	MIRAGE	14 5/8"	23"	48-13704A41
J	(RH)	S. STEEL	MIRAGE	14 1/2"	25"	48-13706A41
K	(LH)	S. STEEL	MIRAGE	14 1/2"	25"	48-13707A41
N	(RH)	S. STEEL	TURBO 1	14 1/4"	20"	M20LH
O	(RH)	S. STEEL	TURBO 1	14 1/4"	22"	M22LH
R	DUO	ALUM	VOLVO	B5		853635-1
S	DUO	ALUM	VOLVO	B6		853636-9
T	DUO	ALUM	VOLVO	B7		853637-7
U	DUO	ALUM	VOLVO	B8		853638-5

Specifications are subject to change at any time without notice or obligation. To avoid disappointment at the time of purchase please check with your Stingray Dealer for current information and specifications. Boat speeds are averages of several tests and were performed with MerCruiser Sterndrive Power at sea level. All boat speeds and propellers shown are to be used as guidelines only for general applications as boats and operating conditions will vary. The best propeller for specific boating needs can only be determined by performance testing by your dealer. Results on individual boats may vary depending on many factors, including driver, weather, altitude, load, condition of propeller, lower unit, and boat bottom. Matching of your boat and use conditions to the proper propeller by your dealer will make your boating experience more enjoyable and keep your engine running longer and stronger. Propellers used during testing are shown to be used as a guideline only and are not intended to be an absolute recommendation.

CAUTION: Never exceed engine manufacturers recommended RPM.

# Actionwear



Designed especially for the Stingray enthusiasts, the 1991 line of Actionwear offers apparel and accessories that are sure attention getters. Whether boating or at any activity, Stingray Actionwear will add both color and style.

- ◆ T-Shirts
- ◆ Shirts
- ◆ Jackets
- ◆ Sweaters
- ◆ Hats & Visors
- ◆ Beach Towel
- ◆ Insulated Drink Holders
- ◆ Sunglasses
- ◆ Custom Embroidery
- ◆ And More!

So get in on the Action. See your nearest Stingray Dealer for your '91 Actionwear Brochure or write:

**STINGRAY BOAT COMPANY**  
Actionwear Department  
P.O. Box 669, Hartsville, South Carolina 29550

Your Stingray Dealer



## WARRANTY INFORMATION

All Stingray warranties are limited warranties within the meaning of Title 1 of the Federal Trade Commission Improvement Act. A full statement of coverage, terms and conditions applying to the stingray warranty has been furnished to all Stingray dealers. In addition, information is supplied with each new Stingray Boat.

This brochure shows only partial list of standard equipment and some boats are shown with optional accessories. To avoid disappointment, please check with your Stingray dealer for current information and specifications at the time of purchase. Any variations in colors shown are due to reproduction variations in the printing process. styling, design, equipment, prices, colors, and construction are subject to change without notice or obligation.



# STINGRAY

East Railroad Ave., P.O. Box 669, Hartsville, S.C. 29550  
Phone (803)383-4507