

STINGRAY



1992

ENGLISH

EDITION

Approximately 40% of Stingray's product is sold in the international markets - markets that demand the highest quality.

Why Choose Stingray?

Choosing the right boat for you and your family can be a tough decision. You soon discover that boats come in many different sizes and configurations to suit a variety of boating needs, with each manufacturer claiming to be the best. The only way to make the right decision is to make a detailed comparison, so we've designed this catalog to help you do just that.

About Stingray

Stingray Boat Company began operations in 1979 with 11 employees and 15,000 square feet of production space at a time when other companies were closing down. Today, after 5 major expansions, we have over 200,000 sq. ft. of plant space where we build 17 models, from our new 16' 501zp outboard to our legendary 27' 828svx. Hulls are built in our one-of-a-kind lamination facility in which the molds are moved about and monitored by a computerized overhead tram system. We currently market to over 25 countries across four continents; approximately 40% of Stingray's production is being shipped abroad.

Not content with just getting by, we are constantly working to make our boats better while maintaining a reasonable cost. Our quality control



With over 200,000 square foot of production and Research & Development facilities, Stingray continues to expand into the 21st Century.



UNITED STATES



AUSTRIA



BELGIUM



CANADA



CZECHOSLOVAKIA



DENMARK



FINLAND



FRANCE



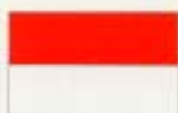
GERMANY



GREECE



HUNGARY



INDONESIA



IRELAND



ITALY



LUXEMBOURG



MALAYSIA



NETHERLANDS



SOUTH AFRICA



SPAIN



SWEDEN



SWITZERLAND



TAIWAN



UNITED KINGDOM



YUGOSLAVIA

Three-dimensional computer aided design allows Stingray to handle a model as a solid 3-D object at the earliest stages of design, completely eliminating months of trial and error that is involved in more traditional methods.

program involves every employee, with special incentives to do the best possible job - an assurance that you're getting the best possible boat.

Let's take a look at what goes into a Stingray boat.

What is a "zp" hull?

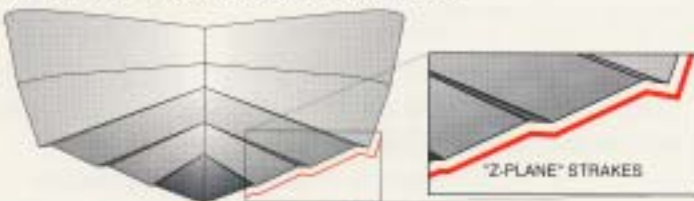
Most boatbuilders continue to use design and construction techniques that are centuries old. While they can build boats this way, it leaves room for unnecessary errors and suffers from certain limitations inherent in 2-dimensional drafting. A much better way in this age of high tech can be found in

zp our computerized boatbuilding process, in which the entire boat is electronically modeled in 3-dimensions. (Incidentally, the shape of a Stingray hull can be created only from a 3-D model).

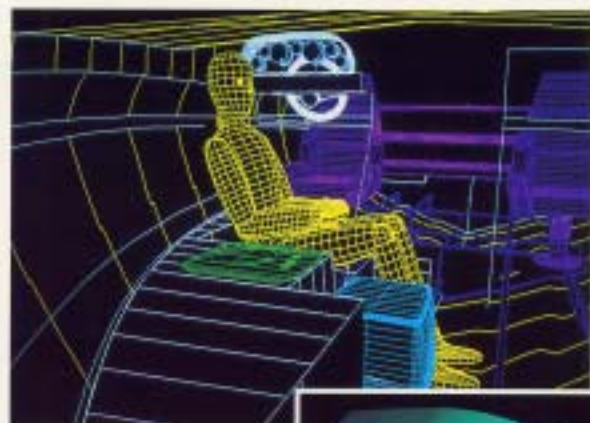
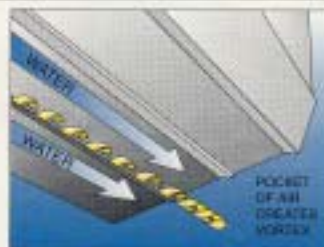
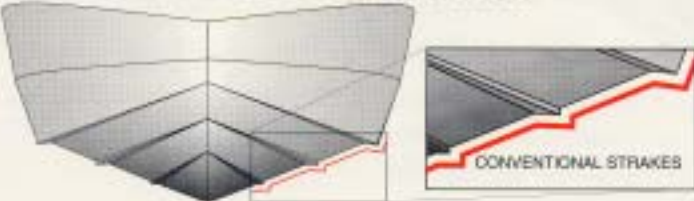
Our "z-plane" or "zp" hull is a product of this technology. A hull so unique, it has been granted a patent by the United States Patent and Trademark Office. A hull that enjoys several major advantages over conventional v-bottom boats.

A typical deep-v hull has lifting strakes added to

"Z-PLANE" HULL CONFIGURATION



CONVENTIONAL HULL CONFIGURATION



the bottom during the tooling stages, while the "zp" hull is designed as a unit from the start.

This revolutionary design passes through the water with no bubbles or vortices formed by the hull shape. The smooth flow of water allowed by this design gives the propeller better bite during both straight line driving and hard cornering. In addition, the "zp" hull has a notched transom, a feature adopted from offshore



NOTCHED TRANSOM

racing boats, that allows the engine to be mounted higher. On the "zp" hull, you get the performance advantages of less drag, more mph, and greater fuel efficiency, without the problems nor-

The patented "z-plane" hull is revolutionary in its reduction of air pockets and its ability to integrate the new strakes into the hull for superior handling and agility. The notched transom allows the engine to be mounted higher thus reducing drag and increasing speed.

All wood parts are cut using a computer router, accurate to .001", guaranteeing quality down to the smallest detail in every Stingray produced.

mally associated with higher drive unit mountings.

Now we have a 3-D model of a "zp" hull in the computer. We've only just begun.

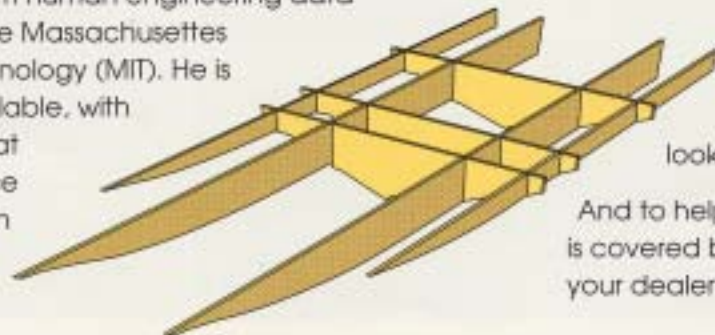
Meet Oscar

Once the hull is designed, we can begin assembling a more complete version of our model. The boat begins to take shape piece by piece, except the parts are all in the computer, literally an electronic "parts bin". Any component is available - engines, steering assemblies, seats, hardware, etc. - so that we can actually build the boat right on the computer screen. But how do we determine the proper positioning of these parts?



The science of Ergonomics is used in the slightest considerations when it comes to your comfort. With the help of Oscar (our 3-D computer man), Stingray can check everything from seat height to cabin capacity before the first prototype is built.

This is where "Oscar" comes in. Oscar is our 3-D figure created from human engineering data published by the Massachusetts Institute of Technology (MIT). He is completely scalable, with jointed limbs that allow us to place him anywhere in the boat in whatever



After the stringer system is cut on our computerized router, it is carefully placed in the hull and totally encapsulated in fiberglass for supreme strength and durability.

position we need to evaluate. For instance, when Oscar is seated at the helm we can place all major controls within easy reach, ensure that the instruments are visible and the view forward is unobstructed. These are things that must be considered, as they can make your boating experience much more enjoyable.



The quality goes in...

Once a design has been completed, we pull "sections" from the 3-d model to build the master. This electronic data goes directly from the computer to our NC router, so the shape of the finished part will be identical to the computer model. The router is also used to do repetitive chores such as side panels and plexiglass parts - each one an exact duplicate of the original. Our master craftsmen then painstakingly fashion the finest molds in the industry.

From start to finish, Stingray Boats are built with only top-quality parts and materials. Premium gelcoat; U-V and mildew resis-

tant carpets; stainless steel hardware. The seats in a Stingray, built in our own upholstery department, are comfortable and supportive. Everywhere you look, quality abounds.

And to help protect your investment every Stingray is covered by our Three Year Protection Plan. See your dealer for details.



Test, test, test...

No Stingray will ever go into production until it has passed extensive durability and performance trials. The end product speaks for itself. Our top-end speeds and fuel economy are among the best in the industry, but we didn't sacrifice cornering or ride quality to get there. A truly efficient hull performs well in every respect.



With over 90 years of combined experience, Stingray's test team will never allow a single model to go into production until it's worthy of the Stingray name.

Our test team has over 90 years of combined experience - they know what it takes to make a Stingray perform. But if that's not enough, listen to what these experts had to say:

"What this translates to in terms of performance is a boat with outstanding cornering abilities."

- Motorboat

"As a tribute to the unique z-plane hull design, the boats cornering ability is nothing short of phenomenal."

- Boating World

"You just nail it and the boat comes out of the hole like a shot out of a cannon."

- Canadian Power Illustrated

"Outstanding performance, unique innovations, and extra creature comforts make it truly one of the most impressive boats I've seen."

- Motorboat

Both nationally and internationally, boating publications testify to the quality and performance inherent in every Stingray. Stingray wins quality awards annually from a variety of recognized publications.

"It does exactly what you want it to, when you want it to."

- Powerboat

Both National and International boating magazines consistently testify to the quality reputation Stingray enjoys.

We invite you to compare Stingray to any other boat. We have included a chart on pages 22 & 23 that includes critical dimensions, weights, and capacities of all Stingray boats. We think you'll find Stingray is at or near the top in almost every category. When you consider the timeless styling, exceptional performance, and proven value available in every Stingray, why buy anything else?



editor's pick



501zp / 541zp

"Stingray is really on to something with this new hull design, because rarely do we encounter such sparkling performance in a production hull."

- Powerboat Magazine

The advantages that have set the "zp" series apart from the competition is now available in two new models. These outboards are designed with passengers in mind, with capacities well above the industry average. The 501zp has a capacity of as many as five people or 730 lbs., with up to 80 horsepower. The 541zp can entertain eight or carry 1,085 lbs., while being pushed along with up to 135 horsepower. Just shove the throttle and the patented z-plane hull with it's notched transom will get you going in a hurry.

Along with flawless performance, you get a curved safety glass windshield with walk-thru, integrated swim platform, and a deep spacious bow to distinguish these Stingray newcomers as serious players in the outboard arena.

Although these models are among the most affordable in their category, we have taken care that they uphold our reputation for matchless quality. From computer design to delivery, the same meticulous concentration is given them as their larger siblings.

501zp L.O.A.	5.0m (16'5")
541zp L.O.A.	5.4m (17'9")

541zp

501zp



501zp



The 536zp and 537zp, pioneers of the "zp" hull design, perfectly meld practicality, performance, and comfort. With the advent of computer design, every form and function has been meticulously engineered.

Waterski Magazine noted that the 536zp has an "exceptionally well-designed interior for a 17-and-a-half-foot bowrider." Standard interior includes a padded motorbox with built-in drink holders, rear jump seats, a back-to-back sleeper lounge on the passenger side with a swivel bucket seat at the helm. The optional interior offers two swivel bucket seats, a full width bench seat, and a generous sunpad. Both interior arrangements are exceptionally deep and offer plenty of storage, an in-floor ski locker, top storage, and a 46 quart in-floor cooler.

All stainless steel hardware, integrated swim platform with boarding ladder, and a curved glass windshield couple with "zp" performance to separate these models from all contenders.

536zp

537zp

"This recreational stern-drive (536zp) appropriately earns our Family Ski Boat Seal of Approval, and some of its performance statistics actually exceed the standards required for that range."

- Waterski Magazine

536zp L.O.A.	5.3m (17'5")
537zp L.O.A.	5.9m (17'5")



536zp

537zp



596zp / 656zp

"Stingray's engineering staff went to work blending the company's extensive performance know-how with some provocative new theories in V-bottom hull design. The result is one of the best running, most efficient 19 foot bowriders we've tested."

- Powerboat Magazine

These models help make having friends on board a pleasure. The 596zp and 656zp offer the same performance advantages of the smaller "zp" models, with a maximum amount of space.

Stingray cockpits and interiors are fine examples of ergonomic layout and design allowing a high level of efficiency. A deep molded-in bow section, standard AM/FM cassette stereo, integrated swim platform, an in-floor ice chest, and ample storage are guarantees for a successful outing - no matter what your water sport. All this combined with the revolutionary "zp" hull is sure to make your next excursion one to remember.

As for the "zp" handling, Bob Nordskog, editor of Powerboat Magazine, said, "I could've spent the whole afternoon weaving my way across the lake - the cornering stability was that enticing." Waterski Magazine agreed by pointing out that it produces a "smooth, quiet ride and excellent handling, especially around the dock."

596zp L.O.A. 5.9m (19'5")
656zp L.O.A. 6.5m (21'5")



656zp



596zp



At first glance you may just think these models are just attractive closed bows, but you ain't seen nothing yet! Motorboat Magazine testified that "outstanding performance, unique innovations, and extra creature comforts make it (657zp) truly one of the most impressive boats I've seen."

The impressive benefits doesn't stop with their amazing agility and performance stats. Three-dimensional design capabilities allow Stingray it's greatest advantage in the art of comfort. Before a model ever leaves engineering every area on board is carefully thought out. Instead of spending months trying to work all the 'bugs' out of a model, Stingray designers are working to put in comfort and function. For Stingray, luxury is not an accident, it's a science.

Before you decide to pay more for less, you owe yourself a test drive in the 597zp or the 657zp. The models that impress the experts.

597zp / 657 zp

"If you've ever driven a sports car that corners as if it were on a string, you have an idea of how the 657zp handles on water. Control in the turns are phenomenal."

- Motorboat Magazine

597zp L.O.A.	5.9m (19'5")
657zp L.O.A.	6.5m (21'5")

657zp



597zp



599zp / 659zp

"Like a comfortable shoe, a Stingray boat fits."

- Boating World

Using the same superior Z-Plane hulls as the runabouts and sportboats, Stingray has produced two cruisers with weekend amenities. As an added benefit, either the 599zp or the 659zp may qualify as a second home.

The cockpit seating, whether standard or optional XL layout, is constructed of polypropylene cores - not wood- supporting high quality foams and vinyls. Stingray seats are built for lasting comfort.

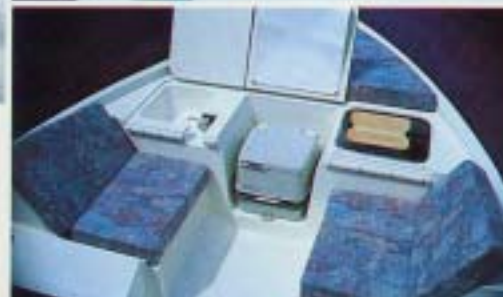
The decks and hulls are built around an extremely space efficient interior of low maintenance fiberglass. A one piece innerliner transforms what would otherwise be a cramped cubby hole to an amazingly spacious, functioning cabin. It will sit two adults comfortably while they cook at a full galley! A recessed alcohol stove with cutting board, a sink with three gallon water tank and formica countertop are all easily cleaned, and concealed until you need it. Rearrange the cushions and in a matter of seconds you have sleeping quarters for two.

599zp L.O.A.	5.9m (19'5")
659zp L.O.A.	6.5m (21'5")



599zp

659zp



Sixty mile per hour speed in a bow rider demanded a second look at seat design. What we came up with is the 696svx bow rider's contoured bow seats for secure, comfortable high speed cruises. This innovative design walked away with a Best Of Boating Award from Boating Magazine for it's comfort and it's great looks.

Taking the zp hull into the sportboat arena is the 598zp. This bold sportboat is the smallest sportboat Stingray offers at 19'5", but what a punch. With a suggested 4.3LX engine it can easily reach 54 mph. The 696svx at 22'8" with a recommended 5.7L engine climbs to 57 mph.

For both models, the standard cockpit is an XL layout with two swivel bucket seats, a full width bench seat, a large sundeck and a 46 quart in-floor cooler. The highlight of the cockpit is the dash, with a full complement of gauges and a tilting Dino steering wheel.

Grab your friends and take them for the ride of their lives!

598zp / 696svx

**"When it comes to performance,
Stingray runs with the best."**

-Popular Mechanics

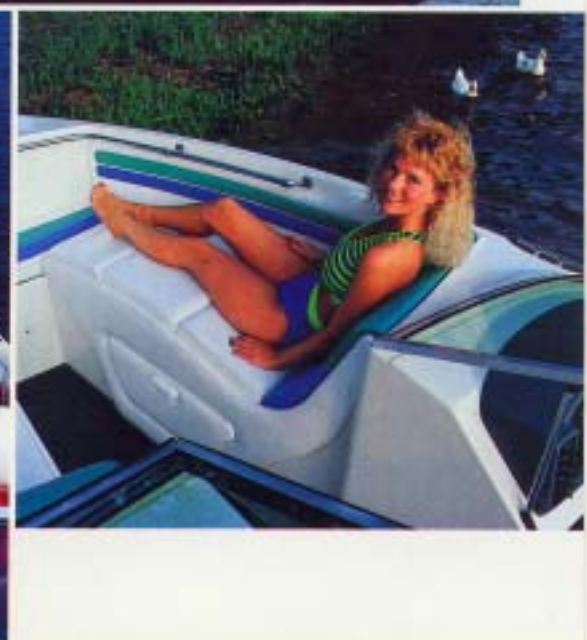
598zp L.O.A.	5.9m (19'5")
696svx L.O.A.	6.9m (22'8")



696svx



598zp





STINGRAY



Curved, Tinted Screen with Walk-thru &

Ergonomic Instrumentation

Fold Down Deck Access Ladder

Full Size Translucent Deck Hatch

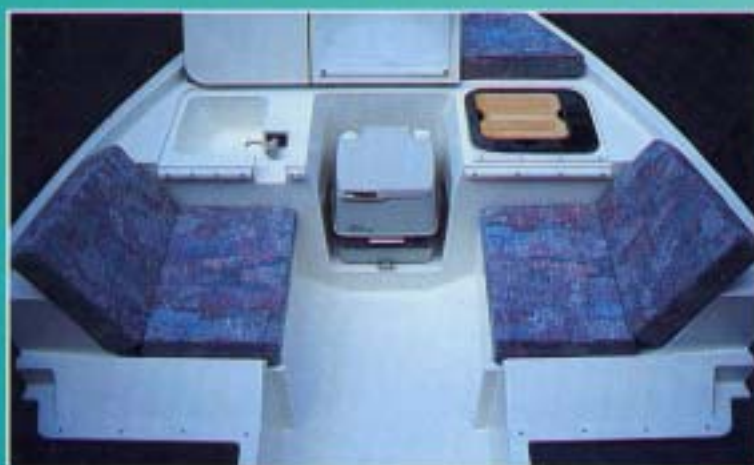
Stainless Bow Rails

Stainless Cleats

Die-cast Rubrail Cap

Patented Z-Plane Hull

Stainless Bow & Stern Eyes

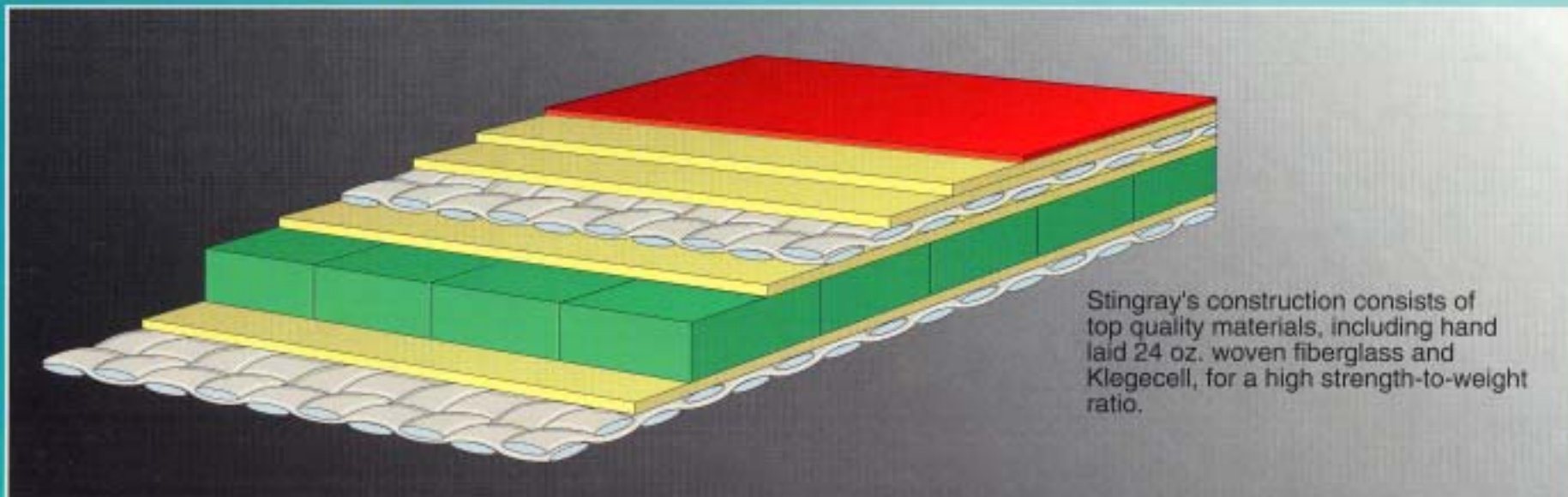


Molded Cabin Liner - Includes Sink with Overboard Drain, Alcohol Stove With Cutting Board, and Portable Marine Head

Lockable Plexiglass Cabin Doors

Polypropylene Seat Frames
Adjustable Head Rest

46 qt. In-floor Ice Chest



Stingray's construction consists of top quality materials, including hand laid 24 oz. woven fiberglass and Klegecell, for a high strength-to-weight ratio.

Safety Glass Windshield
Leak-Proof Vent Windows

Custom Designed
Control Panel

High Output Stereo

Sport Steering Wheel

Power Trim & Tilt

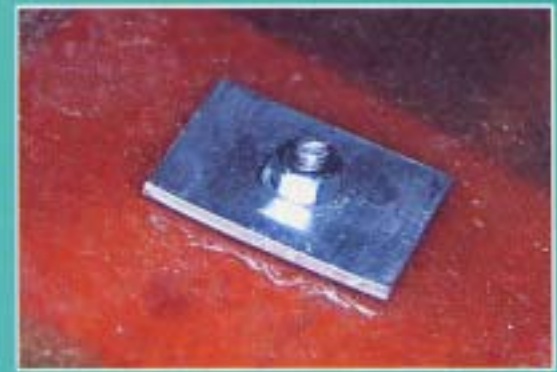
Rotating Bucket Seats
with Fore & Aft Adjustment

Storage In Side Panels, Under Rear Bench
Seat, In Engine Compartment (On XL),
and In Bow

Premium Marine Vinyls & Upholstery

Fold-up Storage Dividers

Concealed Engine
Compartment Ventilation



Welded Stainless Steel Rails,
Through Bolted, with Backing Plates

Stainless
Ski Tow
Ring

Integrated Swim Platform

Stainless Swim Ladder

High Capacity Bilge Blower
Automatic Bilge Pump

PVC Pipe
Facilitates Water Drainage

Color Coordinated Graphics

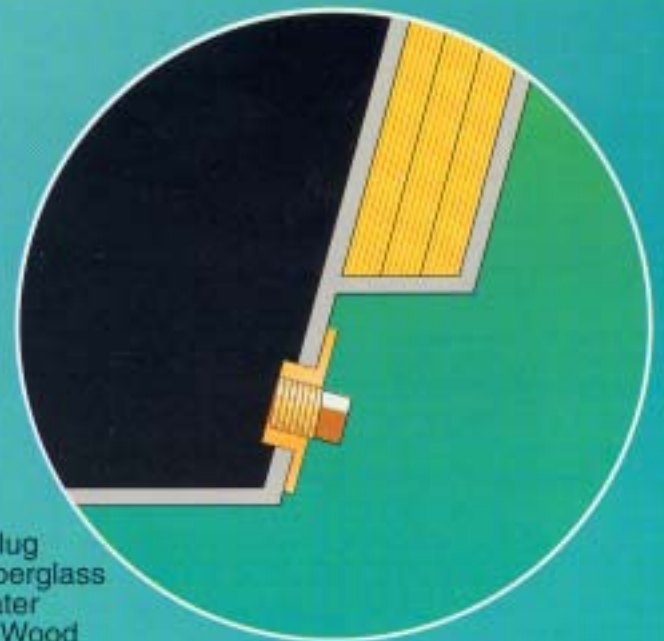
Fiberglass Encapsulated
Wood Stringer System

All Weather Marine Carpet

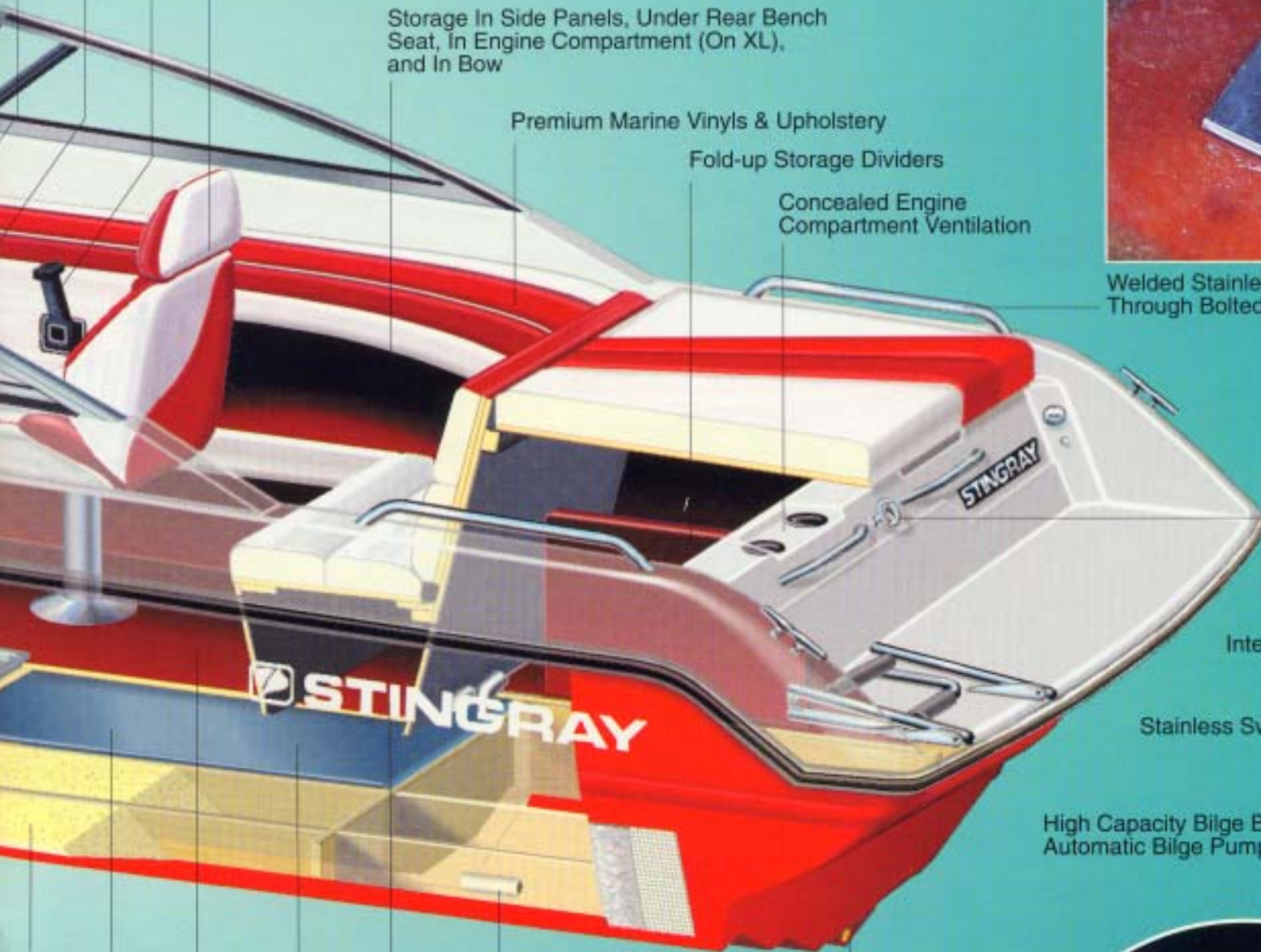
Welded Aluminum Fuel Tank

Full Foam Flotation - Adds Rigidity & Sound Deadening

Brass Drain Plug
Installed In Fiberglass
Eliminates Water
Seepage Into Wood



Standard Interior includes a Sport
Bucket Seat and this comfortable
Back-to-Back Sleeper Lounge Seat



658zp / 698svx

"This boat (658zp) is a pleasure to drive. It's really responsive, with no surprises or oddities."

- Powerboat Magazine

When it comes to performance to make you proud, Stingray's sportboat line is untouchable. But you don't have to take our word for it. Powerboat Magazine boasted that, "The boats tracking, handling and turning characteristics were all exceptional. We found absolutely no peculiarities, which means to us that the 698 is a pleasure boat in the truest sense."

Thanks to the innovative fiberglass cabin liner in these boats, they may qualify as second homes. The liner includes a sink, alcohol stove, and porta-potti as standard equipment. The cushions can be arranged to provide seating or sleeping for two.

A closer look reveals standard swivel bucket seats, full width bench seat, sunpad, full instrumentation, and an adjustable Dino steering wheel. Bow and stern eyes complement the all stainless deck and hull hardware. The 658zp and 698svx sportboats - shaped to leave the wind and water unstirred and a lasting impression on your mind.

658zp L.O.A.	6.5m (21'5")
698svx L.O.A.	6.9m (22'8")



658zp



698svx



The 828 is Stingray's 1992 flagship. It embodies everything Stingray stands for: exhilarating speed, superb handling, a space efficient cabin, and distinctive Stingray styling. The 828 has excellent performance rigged as a mid-seventy MPH package with twin 454s. The boat's balance allows a perfect running attitude and dazzling handling. All as a result of the extensive fine-tuning that has gone into making this off-shore legend.

The cabin was designed with entertaining in mind. As you pass through the smoked plexiglass door you immediately notice two facing sofas that can fold together to make a 6'2" bed. An entertainment center with a stainless steel sink, wet bar, 25 qt. cooler, AM/FM cassette stereo, and concealed portable head divides the sitting area from a 7' berth. Powerboat Magazine exclaimed that Stingray was "willing to try some new ideas in cabin design, lighting and interior appointments and its paid off with one of the best laid out sport boats we've ever seen at this length."

828svx

"Stingray President Al Fink put his heart and soul into this boat and has every reason to be proud. It is a masterful machine that does everything right."

- Powerboat Magazine

828svx L.O.A. 8.2m (26'11")



719zp

"When our Chief Boat Tester put the 719zp through her paces, she tracked straight as an arrow and refused to break loose even in tight turns."

- Boating Magazine

This 23'6" (7.1m) cruiser provides excellent performance with creature comforts of a much larger cruiser, all in a trailerable package. As a "zp" model this cruiser is a true performer. Lakeland Boating Magazine proclaimed that "the hull showed no slippage whatsoever, no matter what cornering exercises I put the boat through."

Along with great looks and handling, the 719 offers exceptional livability. Its list of standard equipment includes an alcohol/electric stove, refrigerator, shore power, and battery charger.

The walk around deck leads to bow anchor storage and a forward sun pad. The cockpit sports two swivel bucket seats and a picnic table. A full width bench seat converts to a large double bed for lounging in the sun or comfortable overnight stays. The low-glare dash panel offers an unobstructed view of the gauges and provides an accessory panel for additional electronics. Below, the cabin boasts a fully enclosed head with vanity, a galley, and dinette seating for four with plenty of headroom. Two hatches and four screened windows provide ventilation.

719zp L.O.A.

7.1m (23'6")



Based on the same successful hull design as our sportboat, the 829 is a showcase of Stingray's attention to detail in design and construction. It's a trailerable second home with luxury features at an affordable price. The 829svc is Stingray's largest cruiser in the 1992 lineup. The cockpit has a straight-forward layout that guarantees plenty of room. The helm seat can accommodate three and as many as five can sit comfortably on the L- settee aft. The walk-through transom makes entertaining easy. Shore power and a battery charger make nights at the dock as comfortable as home.

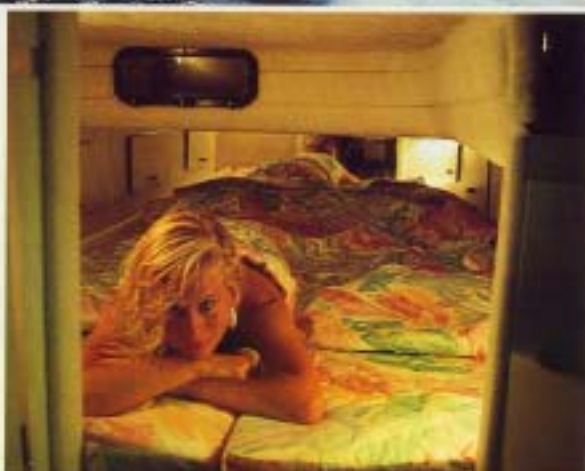
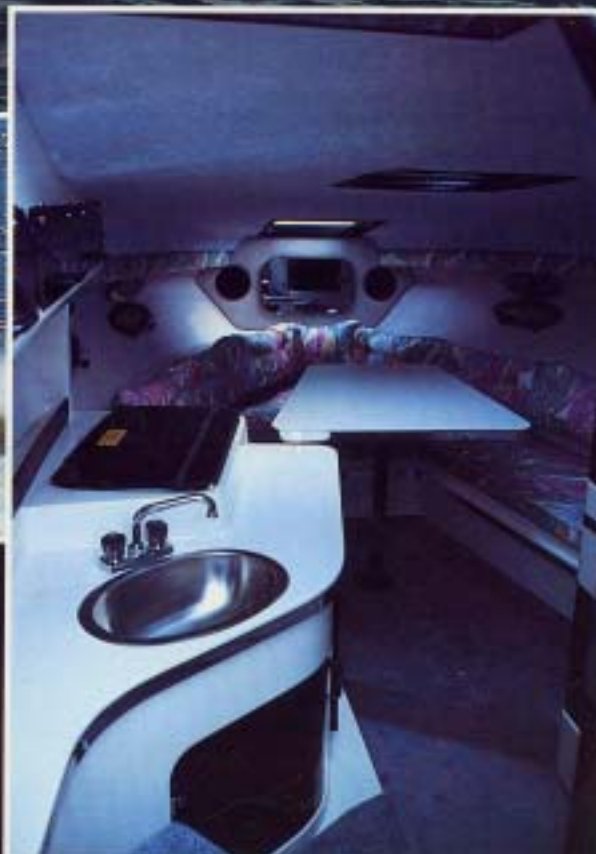
The cabin area is nothing less than ingenious. The layout accommodates a large dinette area that can convert to an extra-large double V-berth. A galley, with full standing headroom, is complete with stainless steel sink, two burner alcohol-electric stove with a cutting board cover, and refrigerator. A fully enclosed stand up head has a sink, vanity, and hand-held shower. To finish it off, the aft cabin has a second double bed with sitting headroom.

829svc

"Stingray already has a reputation for producing well-made boats that are good performers. But the new, sporty-looking Stingray 829svc is revolutionary in terms of an ingenious use of space which makes it an extremely versatile, all-around family cruiser."

-Motor Boating & Sailing

829svc L.O.A. 8.2m (26'11")



Standard Equipment

O/B		OPEN BOW			CLOSED BOW			SPORT BOAT					CRUISER			
501	541	536	596	656	537	597	657	598	658	696	698	828	599	659	719	829
Alcohol Stove								■	■		■		■	■		
Alcohol-Electric Stove															■	■
Self-Bailing Cockpit												■			■	■

Specifications are subject to change without notice or obligation.



Optional Equipment

OPTION ORDER NUMBER ▼	O/B		OPEN BOW			CLOSED BOW			SPORT BOAT					CRUISER			
	501	541	536	596	656	537	597	657	598	658	696	698	828	599	659	719	829
Digital Depth Finder w/ Alarm	21	264	264	264	264	264	264	264	264	264	264	264	S	264	264	S	S
H/O Stereo System	40	299	299	S	S	S	S	S	S					S	S		
H/O Digital Stereo with Equalizer	22	479	479	250	250	250	250	250	250	S	S	S	S	250	250		
H/O Digital Remote Stereo with Equalizer	23												S	357	357	S	S
Large Deluxe Top (Sunbrella Only *)	24	S	S	S	S	S	S	S	229*	229*	229*	229*		S	S	S	S
Full Canvas Set (Sunbrella Only *)	4	370	370	351	369	390	257	281	281	293*	293*	476*	293*	269	281		350
Camper Canvas	15															500	789
Side Curtains	16	109	109	84	84	84	84	84	84	96	96	109	96	96	96	109	96
Aft Curtains	17	167	167	173	183	197	173	197	197	197	197	197	197	184	197	391	254
Bow Cover (Open-bow models)	18	94	94	94	101	109						170					
Walk-thru Flap (Open-bow Models)	14	36	36	39	44	46						50					
Cockpit Cover	13									357	357	390	390	411			
Mooring Cover	5	221	273	273	291	323	273	291	226	359	367	407	407	586	291	323	496
Auto. & Man. Bilge Pump (500 gph) (2 each)	38	60	60	S	S	S	S	S	S	S	S	S	S	S	S	S	S
Battery On/Off Switch	36			50	50	50	50	50	50	50	50	50	50	100	50	50	50
Floor Storage	37	179	179	S	S	S	S	S	S			S					
Twin Lounge Seats	9	S	S	107	107	107	107	107	107					107	107		
Deluxe XL Sundeck Interior (with twin buckets)	3			307	307	307	307	307	307	S	S	S	S	S	307	307	S
Hatch Screen Kit	10							43	43		43		43	43	43	43	43
Stainless Steel Port Windows	20								140				240		140		
2-step Ladder	6	107	107	107	107	107	107	107	107	107	107	107	107	107	107	S	S
Thru Hull Exhaust - Stainless Steel	11			500	500		500	500	500	500	500	500	1000	500	500	500	
Thru Hull Exhaust w/ Silencer - Stainless Steel	12			700	700		700	700	700	700	700	700	1400	700	700	700	
Carpet (Molded, Drop in)	33												357			414	500
Bennett Trim Tabs	7			729	729	729	729	729	729	729	729	729	S	729	729	729	S
Two-tone Hull	1			179	179	179	179	179	179	179	179	179	179	179	179	179	179
Two-tone Deck	2									107	107	107	107	107			
Windshield Wiper (Starboard)	25															129	129
Porta-Potti w/ Self Contained Holding Tank	39							129	129		S		S	S	S	S	
Marine Head System (No Tank)	26															357	357
Marine Head System with Holding Tank	32															743	743
Hot Water System (220V)	228															571	571
Hot Water System (110V)	28															500	500
220 Volt Electrical System (export)	27												357			357	486
Macerator	35															407	407
Halon Fire System	19			331	331	331	331	331	331	331	331	331	331	331	331	331	331
Sting Ray Hydrofoil Stabilizer	29			64	64	64	64	64	64	64	64	64	64	64	64	64	64

S = Standard Equipment

Prices are in U.S. Dollars and do not include freight, taxes, import and export fees where applicable.



4 (597zp / 599zp)



24



5



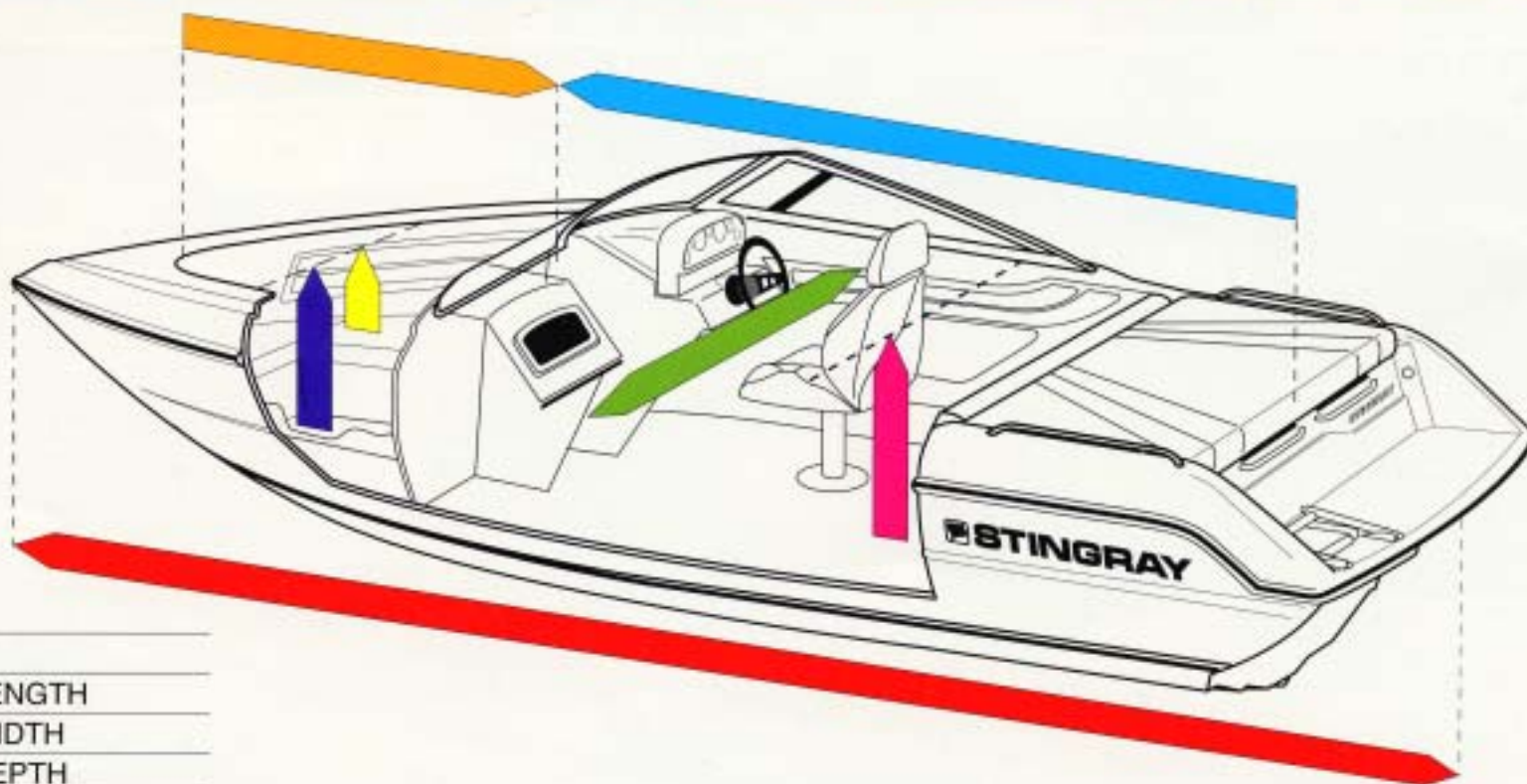
4 (719zp)

STINGRAY



Specifications

	OUTBOARD		OPEN BOW			CLOSED BOW			SPORT BOAT					CRUISER			
MODEL			536	596	656	537	597	657	598	658	696	698	828	599	659	719	829
L.O.A.	meters		5.3	5.9	6.5	5.3	5.9	6.5	5.9	6.5	6.9	6.9	8.2	5.9	6.5	7.1	8.2
	ft.		17'5"	19'5"	21'5"	17'5"	19'5"	21'5"	19'5"	21'5"	22'8"	22'8"	26'11"	19'5"	21'5"	23'6"	26'11"
Beam	in.		88"	94"	97"	88"	94"	97"	94"	97"	96"	96"	102"	94"	97"	102"	102"
	cm.		224	239	246	224	239	246	239	246	244	244	259	239	246	259	259
Bridge Clearance	in.		48"	50"	53"	48"	54"	55"	47"	48"	52"	52"	60"	54"	55"	66"	78"
	cm.		122	127	135	122	137	149	119	122	132	132	152	137	140	168	198
Weight (less engine)	lbs.		1495	1675	1933	1400	1760	1947	1792	1966	2362	2193	3739	1830	2024	3176	4850
	kg.		677	759	875	634	797	882	812	890	1070	993	1694	829	917	1439	2197
Fuel Cap.	gal.		28	28	43	28	43	43	43	43	42	42	125	43	43	75	75
	liters		106	106	163	106	106	163	163	163	159	159	473	163	163	284	284
Water Cap.	gal.												3	3	3	18	24
	liters												11.4	11.4	11.4	68.1	91
Ice Box Cap.	qt.		46	46	46	46	46	46	46	46	46	46	25	46	46		
	liters		43.5	43.5	43.5	43.5	43.5	43.5	43.5	43.5	43.5	43.5	23.6	43.5	43.5		
Max. Cap.	persons / lbs.		8/1225	8/1600	10/1950	6/1260	8/1600	8/1950	8/1550	8/1950	10/1850	8/1850	12/3400	8/1800	10/1850	12/2600	12/3400
	per. / kg.		8/555	8/725	10/883	6/570	8/725	8/883	8/702	8/883	10/838	8/883	12/1540	8/725	10/838	12/1178	12/1540
Free Board	in.		27"	26"	27"	27"	26"	27"	26"	27"	24"	24"	28"	27"	28"	41"	43"
	cm.		69	66	69	69	66	69	66	69	61	61	71	69	71	104	109
Molded Depth (W/S Base to keel)	in.		46"	49"	52"	46"	49"	54"	46"	49"	50"	50"	61"	53"	53"	66"	78"
	cm.		97	107	117	97	107	117	97	107	107	107	155	135	135	168	198
Max. Depth (Includes Windshield)	in.		58"	61"	64"	58"	61"	65"	58"	61"	60"	60"	75"	65"	66"	81"	92"
	cm.		147	155	162	147	155	165	147	155	152	152	190	165	168	206	234
Max. Draft (Drive Down)	in.		30"	32"	33"	30"	32"	33"	32"	33"	36"	36"	34"	32"	33"	33"	38"
	cm.		76	81	84	76	81	84	81	84	91	91	86	81	84	84	97
Bow Depth (Bow to Cushion Top)	in.		18"	21"	21"	30"	37"	30"	29"	23"	15"	24"	41"	27"	27"	37"	40"
	cm.		46	53	53	76	94	76	74	58.5	38	61	104	69	69	94	102
Bow Depth (Max.)	in.		35"	36"	37"	30"	49"	50"	32"	46"	34"	45"	58"	49"	48"	58"	72"
	cm.		89	91	94	76	124	127	81	117	86	114	147	124	122	147	183
Bow Length (Max.)	in.		55"	60"	60"	60"	76"	82"	67"	89"	60"	106"	142"	76"	80"	106"	136.5"
	cm.		140	152	152	196	208	208	170	226	152	269	361	193	203	269	347
Cockpit Depth (At helm)	in.		33"	35"	37"	35"	35"	38"	32"	35"	35"	35"	38"	38"	39"	42"	40"
	cm.		84	89	94	89	89	97	81	89	89	89	97	97	99	107	101
Cockpit Width (Max. Molded)	in.		72"	78"	78"	71"	78"	78"	78"	78"	78"	78"	83"	78"	78"	76"	79"
	cm.		183	198	198	180	198	198	198	198	198	198	211	198	198	193	201
Cockpit Length (Max. Molded)	in.		83"	88"	104"	83"	74"	111"	75"	75"	93"	93"	76"	72"	86"	94"	101"
	cm.		211	224	264	211	188	282	191	191	236	236	193	183	218	239	257
Sleeping Cap.						2+1	2+1	2+1	2+1	2+1		2+1	4+1	2+1	2+1	2+2	4
Transom Angle			15°	15°	15°	15°	15°	15°	15°	15°	15°	15°	15°	15°	15°	15°	15°
Deadrise Angle			19°	19°	19°	19°	19°	19°	19°	19°	19°	19°	21°	19°	19°	21°	21°



- L.O.A.
- COCKPIT LENGTH
- COCKPIT WIDTH
- COCKPIT DEPTH
- BOW LENGTH
- BOW DEPTH TO FLOOR
- BOW DEPTH TO CUSHION

Power Options/Speeds

MODEL		OPEN BOW			CLOSED BOW			SPORT BOAT				CRUISER				
		536	596	656	537	597	657	598	658	696	698	TWIN 828	599	659	719	829
MerCruiser 3.0L	625 lbs. 125hp crank 115 prop 283 kg.	43 C N			43 B N											
MerCruiser 3.0LX	625 lbs. 145 hp crank 136 prop 283 kg.	46 C O	44 C N	42 B N	46 C O	44 C N	42 B N					44 C N				
MerCruiser 4.3L	802 lbs. 175 hp crank 155 prop 363 kg.	51 C O	50 C O	47 C O		50 C O	47 C O	51 C O				48 C N	45 B N			
MerCruiser 4.3 LX	802 lbs. 205 hp crank 175 prop 363 kg.		53 C O	50 C N		53 C O	51 C N	54 C O				52 C O	49 B N			
MerCruiser 5.0L	893 lbs. 200 hp crank 180 prop 406 kg.			50 C N			51 C N		52 C N	50 C N	51 C N				42 B	
MerCruiser 5.7L	907 lbs. 260 hp crank 230 prop 411 kg.			56 C O			56 C O		58 C O	56 C O	56 C O		54 C O	47 B N	39 E	
MerCruiser 350 MAG	938 lbs. 270 hp crank 240 prop 425 kg.			57 C O			57 C O		59 C O	57 O	57 O	64 H H	56 C O	48 B N	40 E	
MerCruiser 7.4L	1113 lbs. 330 hp crank 300 prop 505 kg.									63 D H	64 D H	69 H I				44 B
MerCruiser 454 MAG	1103 lbs. 365 hp crank 360 prop 500 kg.										69 D H		74 J K			
VOLVO 430	791 lbs. 175 hp crank 155 prop 360 kg.	49 T	46 S			45 S	49 T	48 S					47 S	45 S		
VOLVO 431	791 lbs. 175 hp crank 155 prop 360 kg.	51 T	49 S			47 S	52 T	50 S					50 T	48 S		
VOLVO 570	913 lbs. 275 hp crank 240 prop 414 kg.						59 T S		57 T S	57 T S			56 T	48 R	42 R	
VOLVO 740	1150 lbs. 330 hp crank 300 prop 521 kg.									62 U						46 R

Suggested Power

50
C N

Top Speeds
Standard Propeller

64
H H

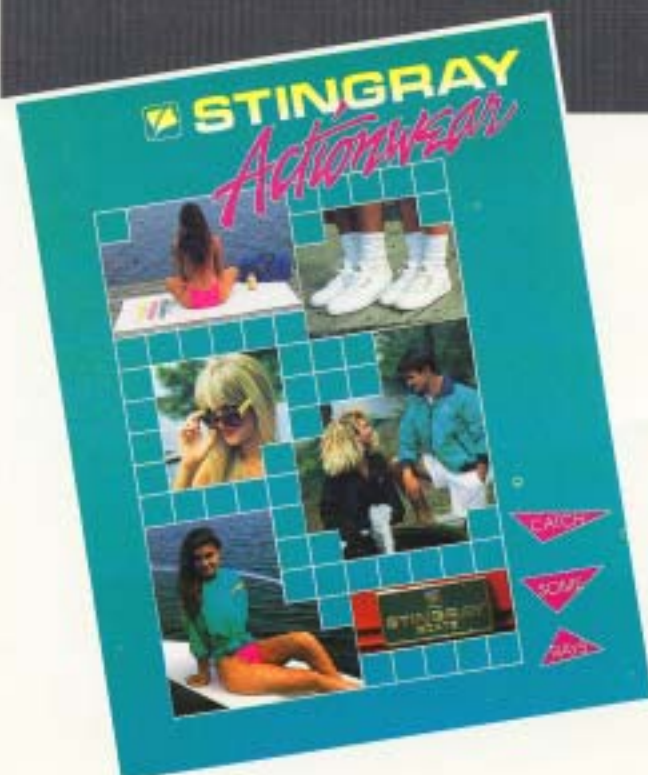
Optional Propeller

PROPELLER KEY

Code	Rotation	Material	Description	Diameter	Pitch	Part Number
B	(RH)	ALUM	QUICKSILVER	1/4"	19"	48-78120A40
C	(RH)	ALUM	QUICKSILVER	13 3/4"	21"	48-78122A40
D	(RH)	ALUM	QUICKSILVER	13 1/2"	23"	48-78124A40
E	(RH)	ALUM	QUICKSILVER	16"	16"	48-16440A40
G	(RH)	S. STEEL	MIRAGE	14 3/4"	21"	48-13702A41
H	(RH)	S. STEEL	MIRAGE	14 5/8"	23"	48-13704A41
I	(LH)	S. STEEL	MIRAGE	14 5/8"	23"	48-13704A41
J	(RH)	S. STEEL	MIRAGE	14 1/2"	25"	48-13706A41
K	(LH)	S. STEEL	MIRAGE	14 1/2"	25"	48-13707A41
N	(RH)	S. STEEL	TURBO 1	14 1/4"	20"	M20LH
O	(RH)	S. STEEL	TURBO 1	14 1/4"	22"	M22LH
R	DUO	ALUM	VOLVO	B5		853635-1
S	DUO	ALUM	VOLVO	B6		853636-9
T	DUO	ALUM	VOLVO	B7		853637-7
U	DUO	ALUM	VOLVO	B8		853638-5

Specifications are subject to change at any time without notice or obligation. To avoid disappointment at the time of purchase please check with your Stingray Dealer for current information and specifications. Boat speeds are maximum from several tests and were performed with MerCruiser Stern Drive Power at sea level. All boat speeds and propellers shown are to be used as guidelines only for general applications as boats and operating conditions will vary. The best propeller for specific boating needs can only be determined by performance testing by your dealer. Results on individual boats may vary depending on many factors, including driver, weather, altitude, load, condition of propeller, lower unit, and boat bottom. Matching of your boat and use conditions to the proper propeller by your dealer will make your boating experience more enjoyable and keep your engine running longer and stronger. Propellers used during testing are shown to be used as a guideline only and are not intended to be an absolute recommendation.

CAUTION: Never exceed engine manufacturers recommended RPM.



Actionwear

Also available for the 1992 model year, is the '92 line of Stingray Actionwear. No matter what your activity, these stylish accessories will add comfort and great looks to it.

- T-Shirts
- Jackets
- Shirts
- Shorts
- Tennis Shoes
- Hats and Visors
- Insulated Drink Holders
- Sunglasses
- Custom Embroidery

And More!

So see your nearest dealer or write for a FREE '92 Actionwear brochure to:

STINGRAY BOAT COMPANY

Actionwear Department

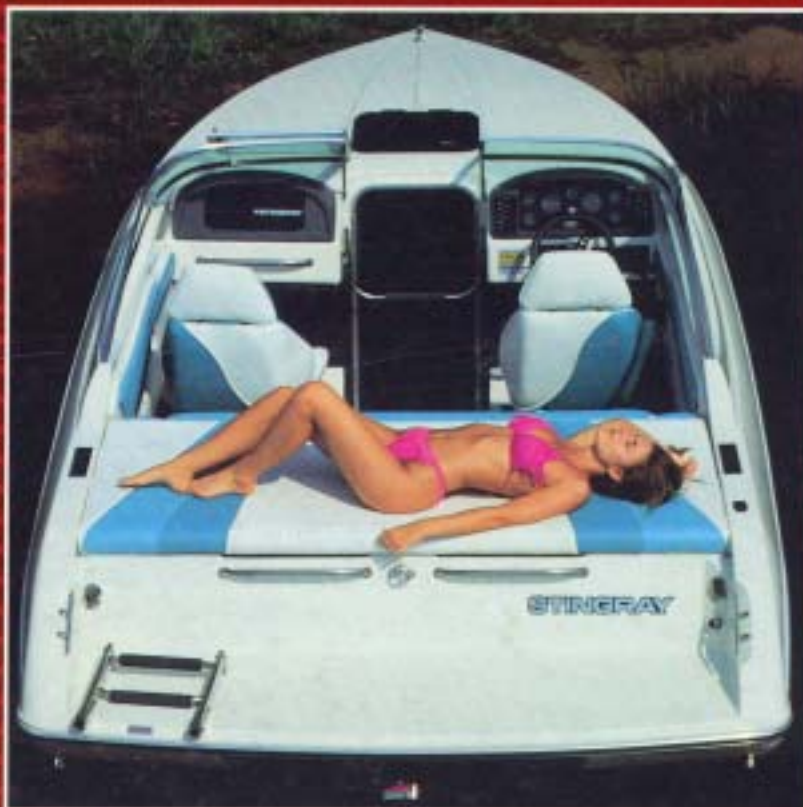
P.O. Box 669, Hartsville, South Carolina 29550

YOUR STINGRAY DEALER:

WARRANTY INFORMATION

All Stingray warranties are limited warranties within the meaning of title 1 of the Federal Trade Commission Improvement Act. A full statement of coverage, terms and conditions applying to the Stingray warranty has been furnished to all Stingray Dealers. In addition Information is supplied with each new Stingray Boat.

This brochure shows only partial list of standard equipment and some boats are shown with optional accessories. To avoid disappointment, please check with your Stingray dealer for current information and specifications at the time of purchase. Any variations in colors shown are due to reproduction variations in the printing process. Styling, design, equipment, prices, colors, and construction are subject to change without notice or obligation.



 **STINGRAY**

East Railroad Avenue, Post Office Box 669
Hartsville, South Carolina 29550
Phone: (803)383-4507