





2-5 About Stingray, Environment, Z-Plane Hull, Technology, Certifications, and Warranty

6-31 Bowriders

6-7 180RX Sport Boat
191RX Sport Boat (OB)

8-9 188LE Sport Boat
188LF Fish Boat

10-11 194LF Fish Boat (OB)
194LX Sport Deck (OB)

12-13 198LF Fish Boat
198LX Sport Deck

14-15 192SC Deck Boat (OB)

16-17 204LF Fish Boat (OB)

18-19 204LR Sport Deck (OB)
208LR Sport Deck

20-21 212SC Deck Boat (OB)

22-23 214LR Sport Deck (OB)
215LR Sport Deck

24-25 225LR Sport Boat

26-27 234LR Sport Deck (OB)

28-29 235LR Sport Deck

30-31 250LR Sport Boat

32-43 Cuddies / Cruiser

32-33 215CR Sport Deck Cuddy

34-35 225CR Cuddy

36-37 225SX Sport Boat

38-39 235CR Sport Deck Cuddy

40-41 250CR Cuddy

42-43 250CS Cabin Cruiser

44-47 Standards & Options

48-49 Canvas Options / Hull Graphics /
Gelcoat Colors / Actionwear

50 Model Specifications

51 Performance Options

ABOUT STINGRAY

STINGRAY BOATS began more than 35 years ago with little more than two molds, a few skilled craftsmen, and a man with a passion to build great performing boats. That passion has endured and continues today. Boat building is not just a business here at STINGRAY; it's a part of who we are. We build boats that families and friends use to make lifelong memories.

STINGRAY is a privately owned, family-run company that focuses on building quality, not quantity. We also provide our customers with the assurance that they are getting the most boat for the best price. This has been the driving force of STINGRAY for over three decades and has provided us with the honor of having two-time, three-time, and even four-time STINGRAY boat owners. It is this loyal following of families who love boating that will continue to drive our passion to keep building great boats for many years to come.

At STINGRAY, we know that our customers lead busy lives and want to make the most out of their free time on the water. With that in mind, we take advantage of our performance history and the current market trends and combine that with our passion for building great boats to create some of the most fun boats on the water! STINGRAY means performance and excitement, at a price that more people can afford.

STINGRAYBOATS.COM



Excellence in Customer Satisfaction



ENVIRONMENTALLY RESPONSIBLE

Being a leader in technology is more than just a philosophy—it's a commitment designed to help ensure the preservation of our natural resources for generations to come. At Stingray, fuel efficiency, waste reduction, recycling, and reduced stack emissions are not just buzzwords—they are measured goals of each employee. Our commitment goes beyond that which is mandated or regulated—it is an internal philosophy to do our part to protect the environment for generations to come. Consider a few of the things that we are doing to protect our planet:

USE OF FOUR-CYCLE ENGINES Stingray uses only three-star rated, four-cycle engines, which are the cleanest and most fuel efficient available for marine use. Better fuel efficiency translates into less fuel consumption. Three-star engines can be four to ten times cleaner than two-cycle outboards, which means less pollution to our environment.



OZONE-FRIENDLY FLOTATION FOAM Stingray uses non-ozone depleting flotation foam by BASF. It is free of chlorofluorocarbons—gases that are depleting the earth's ozone layer. Ask about the use of zero-ozone depleting (zone 3) foam when considering boat brands.



FUEL EFFICIENCY The performance and efficiency of our proven Z-plane hull, documented by third party reports, is unmatched. Better fuel efficiency translates into less fuel consumption, but more importantly, it means less carbon dioxide emissions.

LOW VOC GELCOATS AND RESINS Stingray was the first boat manufacturer to convert to the use of low styrene laminating resins and gelcoats. The combination of these low VOC materials coupled with the latest in low pressure, high temperature spray equipment has reduced Stingray's VOC stack emissions by over 55%.

TWO-INCH FUEL FILLS Stingray is one of the first manufacturers in its class to convert all models to two-inch fuel fills—the same found on large cruisers and motoryachts. This helps avoid refueling spills normally associated with small-diameter fuel fills.

WASTE REDUCTION/RECYCLING Stingray has a recycling program for most waste materials including, but not limited to, cardboard, composites, aluminum, pallets, and metal drums. In cardboard alone, Stingray recycles over 163,000 pounds per year.

COMMITTED We want Stingray owners not only to have fun on the water, but also to know that they are helping to protect the environment at the same time.

FINANCIALLY SOLID

With Dun and Bradstreet's highest credit rating, Stingray is one of the most financially solid manufacturers in the industry. Stingray dealers and customers can depend on a strong partner to provide product innovation and customer support for years to come. We are proud of our debt-free status—a claim that few builders can make!

VALUE AND QUALITY ORIENTED

As one of the founding members of the American Boatbuilders Association (ABABoats.com), Stingray Boat Company is in excellent company with Chaparral, Cobalt, Formula, Godfrey, Grady-White, Monterey, Nautique, Pursuit, Regal, Rinker, and Tiara Yachts. This is another assurance that you are receiving the highest quality materials available at the best possible price. ABA members pool their expertise and resources to purchase only the best products and services available.





Z-PLANE HULL

The Stingray Z-plane hull is unparalleled in the industry. It is up to 30% more efficient than other boat hulls. Developed on a CAD (Computer Aided Design) system, the hull design is unlike competitors' add-on lifting strakes. Stingray Z-planes act as horizontal planing faces when submerged; when very near the water's surface, the outside edge acts as a spray release, passing through the water with no bubbles or vortices. The smooth flow of water allows the propeller better bite during straight line speed and hard cornering maneuvers. Extending beneath the swim platform, the design allows for quicker planing and three-point contact with the water at faster speeds. This combination results in a quicker hole shot, industry leading top-end, and smooth handling at all speeds.

TECHNOLOGY DRIVEN

For the past three decades, Stingray has pioneered many of the advances of technology in the boat building industry. Equipment and tools that were not available just a few years ago are now the mainstays that enable Stingray to achieve unparalleled precision and efficiency i.e., computer-aided designs, multi-axis 3-D milling machines, water jet cutting machines, and CNC routers, to mention a few.

COMPUTER AIDED DESIGN AND MANUFACTURING Every Stingray begins as a three-dimensional computer model. We “build” the boat on-screen and carefully scrutinize each component for size and fit, making all of the necessary adjustments before we ever commit the design to fiberglass. We even use a virtual human to check for legroom and headroom—and to be sure that all of the controls are located comfortably within reach. The information from this 3-D model is sent to the next step in the process: 3-D milling.

MULTI-AXIS 3-D MILLING MACHINE With information available from a 3-D computer model, milling machines can produce a full size model in a matter of hours—a task that would take weeks otherwise. With unequalled precision, the running surface of the hull is cut to the exact specifications. Our master craftsmen then provide the mirror finish that is a hallmark of Stingray quality.

ROBOTIC LAMINATION FACILITY Visitors are always impressed by our plant's cleanliness and unique manufacturing systems. In our lamination building, a custom-designed overhead rail system was developed just for Stingray. Parts under construction are moved from one bay to the next for layup and curing. This system also keeps track of our in-process fiberglass parts while optimizing mold usage and improving productivity. Process automation also increases worker safety, helps maximize efficiency, and improves quality.



WATERJET CUTTING MACHINES Many parts on a Stingray are cut using one of our high-pressure water jet machines. A stream of water no thicker than a human hair slices quickly and neatly through a variety of materials much easier than could be done by hand. Materials such as carpet, foam, vinyl, canvas, rubber, and fiberglass are quickly transformed into precision quality parts.

CNC ROUTERS Computerized numeric controlled routers are used to cut various sheet goods into high quality parts. The computer allows us to “nest” a group of parts efficiently to minimize waste. Because the process is computer controlled, each part is dimensionally identical from one run to the next and can be finished much faster and more inexpensively than those produced by hand.

CE CERTIFICATION

Stingray competes on a global scale and has dealerships located throughout the world from the Middle East throughout Europe, into Asia and Australia. Stingray boats destined for these countries must meet stringent standards prescribed by Consultants Europe (CE) and bear the CE mark.



NMMA / USCG CERTIFICATION

All Stingray boats meet or exceed National Marine Manufacturer Association (NMMA) and US Coast Guard (USCG) certification requirements for safety, such as horsepower, load capacity, steering, fuel systems, compartment ventilation, navigation lighting, and backfire flame control.



WARRANTY

Every Stingray boat is backed by a comprehensive warranty for peace of mind.

FIVE-YEAR LIMITED TRANSFERABLE STRUCTURAL HULL WARRANTY

STINGRAY Boat Co. (hereafter "STINGRAY") warrants the HULL against structural defects in material and workmanship for a period of five (5) years from the date of purchase or six (6) years from the date of manufacture, whichever period elapses first. The warranty provided in this section is to the original retail owner only and applies only if the boat is purchased from an authorized STINGRAY Dealer. During the warranty period described above, STINGRAY will repair (at the factory) or replace, at its option, the fiberglass HULL at the factory if it is determined, in Stingray's discretion, to be structurally defective in material or workmanship. For purposes of this warranty, the HULL is defined as the part of the boat in contact with the water when at rest. The warranty provided in this section is subject to all limitations and conditions contained herein. The remaining term of this HULL Warranty, if any, may be transferred to the second owner if, within 60 days of purchase, the new owner registers the transfer with STINGRAY and pays the established warranty transfer fee. Contact STINGRAY Customer Service at stingrayboats.com/transfer for further details on transferability.

THREE-YEAR LIMITED OSMOTIC HULL BLISTER WARRANTY

STINGRAY warrants against hull blistering caused by osmosis that is discovered and reported to STINGRAY during the first 3 years of ownership (subject to the prorated schedule below). The warranty provided in this section applies to the original retail owner only and is VOID if the original factory gelcoat surface has been altered by excessive sanding, scraping, sandblasting, or accident repair. A marine barrier coating with proper surface preparation is required if the boat is bottom painted or if the boat is left in fresh or salt water for more than 60 days in any 90 day period. In the event of osmotic blistering, STINGRAY will, at its option, repair or cause to be repaired any hull damage and apply a layer of marine barrier coating to the affected surface area(s). Osmotic hull blisters are defined as those blisters, larger than one-eighth inch in diameter and with a depth greater than one-sixteenth inch, which occur on the hull below the waterline. Repairs will be performed (at STINGRAY'S discretion) by the selling dealer, a designated service center, or the STINGRAY factory. The following prorated schedule of parts and labor will be covered by STINGRAY: Blistering discovered and reported to STINGRAY less than one (1) year from date of purchase - 100%; between one (1) and two (2) years from date of purchase - 66%; between two (2) and three (3) years from date of purchase - 33%. All osmotic hull repairs must be pre-approved by STINGRAY prior to any work being performed. Transportation cost is the boat owner's responsibility. Reimbursement shall be limited to one repair, not to exceed eighty US dollars (\$80 USD) per foot of hull length resting below the waterline prior to prorating.

ONE-YEAR LIMITED GENERAL WARRANTY

STINGRAY boats are warranted to the original owner to be free of defects in materials or workmanship for a period of one (1) year from the date of purchase (not to exceed two (2) years from date of manufacture) subject to all limitations and conditions contained herein.

WARRANTY INFORMATION

All Stingray warranties are limited warranties within the meaning of Title 1 of the Federal Trade Commission Improvement Act. A full statement of coverage, terms, and conditions applying to the Stingray warranty has been furnished to all Stingray dealers. In addition, information is supplied with each new boat.

Please read carefully the terms and conditions provided in Stingray's Express Limited Warranty accompanying the sale of your boat. The actual length of warranty coverage for your boat may vary depending on the date of original manufacture and sale date of your boat.

180RX

SPORT BOAT



- ▶ sporty twin bucket seats are constructed of injection-molded polypropylene cores and coated with a stain-resistant protectant to help make cleanup easier
- ▶ RX models (191RX shown) are roomy and feature key amenities of much larger boats
- ▶ an insulated cooler with overboard drain ensures that drinks stay cold for hours of fun and water drains overboard at the end of the day
- ▶ a low profile dash and backlit gauges reduce glare and optimize visibility
- ▶ RX models are available in both sterndrive (180RX) and outboard (191RX) packages

180RX SPORT BOAT

191RX SPORT BOAT

	Length	Beam	Avg Dry Weight (popular engine)	Fuel Capacity	Ice Capacity	Max Capacity
180RX	18'	85"	2219 lbs (3.0 L)	21 gal	14 qt	7 ppl 1070 lbs
191RX	19' 3"	91"	2100 lbs (90 hp)	34 gal	14 qt	8 ppl 1670 lbs



191RX



MORE INFORMATION AND PHOTOS AT STINGRAYBOATS.COM/180RX or [/191RX](http://STINGRAYBOATS.COM/191RX)
photos shown may contain optional equipment; refer to web site for complete details

188LE

SPORT BOAT



- ▶ the three-step stainless steel boarding ladder is conveniently tucked away when not in use
- ▶ the bow area is equipped with an ice chest and roomy storage compartments (188LE)
- ▶ an oversized non-skid lid, held open by a gas-assist strut, provides access to floor storage
- ▶ a convenient walkway leads from the extended swim platform to the cockpit
- ▶ a built-in, two-drawer tackle box (188LF) keeps hooks and lures accessible, yet out of the way
- ▶ the 188L series is available as an LE model (sport boat) or LF model (fish boat)

188LE SPORT BOAT

188LF FISH BOAT

	Length	Beam	Avg Dry Weight (popular engine)	Fuel Capacity	Ice Capacity	Max Capacity
188LE	18' 11"	88"	2350 lbs (3.0 L)	21 gal	32+22 qt	7 ppl 1100 lbs
188LF	18' 11"	88"	2350 lbs (3.0 L)	21 gal	32+22 qt	7 ppl 1100 lbs



188LF



MORE INFORMATION AND PHOTOS AT STINGRAYBOATS.COM/188LE or /188LF
photos shown may contain optional equipment; refer to web site for complete details

194LF

FISH BOAT



- ▶ earth tone colors and textures create a modern look throughout; a low profile dash design optimizes visibility and creates a sporty look that is further complemented with twin sport buckets
- ▶ the 194LF bow features an aerated livewell, tackle storage, trolling motor mount and panel, bow casting platform, and pedestal fishing seat, plus under seat storage
- ▶ the 194LX bow features a non-skid step-thru that doubles as a lid for a slide-out ladder and locker for anchor storage; the step into the bow is a lid that opens to reveal an ice chest
- ▶ the 194L series is available as an LF model (fish boat) or an LX model (sport boat)

194LF FISH BOAT

194LX SPORT BOAT

	Length	Beam	Avg Dry Weight (popular engine)	Fuel Capacity	Ice Capacity	Max Capacity
194LF	19' 6"	94"	2325 lbs (115 hp)	34 gal	32+22 qt	9 ppl 1965 lbs
194LX	19' 6"	94"	2325 lbs (115 hp)	34 gal	32+14 qt	9 ppl 1965 lbs



MORE INFORMATION AND PHOTOS AT STINGRAYBOATS.COM/194LF or [/194LX](http://STINGRAYBOATS.COM/194LX)
photos shown may contain optional equipment; refer to web site for complete details

198LF

FISH BOAT



- ▶ the contoured 198LX bow features a non-skid step-thru that doubles as a lid for a slide-out ladder and locker for anchor storage; the step into the bow is a lid that opens to reveal an ice chest
- ▶ the 198LF bow features an aerated livewell, tackle storage, trolling motor mount and panel, bow casting platform, and pedestal fishing seat, plus under seat storage
- ▶ the sport-bucket with flip-up bolster is finished with rich white and latte stain-resistant vinyl; the low-profile passenger dash features a lockable compartment for storing phones, sunglasses, etc.
- ▶ a convenient walkway leads from the extended swim platform to the cockpit; when inside, the lower step opens to reveal a hidden ice chest

198LF FISH BOAT

198LX SPORT BOAT

	Length	Beam	Avg Dry Weight (popular engine)	Fuel Capacity	Ice Capacity	Max Capacity
198LF	19' 9"	94"	2662 lbs (4.3L)	34 gal	32+22 qt	9 ppl 1450 lbs
198LX	19' 9"	94"	2662 lbs (4.3L)	34 gal	32+14 qt	9 ppl 1450 lbs



198LX



MORE INFORMATION AND PHOTOS AT STINGRAYBOATS.COM/198LF or /198LX
photos shown may contain optional equipment; refer to web site for complete details

192sc

DECK BOAT



192^{sc} DECK BOAT

- ▶ a deep bow and wide body make the 192SC extra roomy; add the optional filler cushions to create a sunpad
- ▶ the L-shape offers storage beneath; the fishing package adds an aerated livewell beneath the rear bench
- ▶ a freshwater sink is conveniently located amidships for easy access by all passengers
- ▶ the cockpit area boasts a custom dash with room for accessories and a windshield visor to shield the driver from the wind; for added appeal, upgrade to the optional sport bucket seat with flip-up bolster
- ▶ in addition to the convenient aft entry, the 192SC features port side steps for easy entry
- ▶ an optional table can be used in the cockpit or bow; the optional forward bimini provides shade from the sun

192SC

Length

20' 1"

Beam

100"

Avg Dry Weight
(popular engine)

2600 lbs
(115 hp)

Fuel Capacity

46 gal

Ice Capacity

67+25+45 qt

Max Capacity

10 ppl
2225 lbs



MORE INFORMATION AND PHOTOS AT STINGRAYBOATS.COM/192SC
photos shown may contain optional equipment; refer to web site for complete details

204LF

FISH BOAT



- ▶ the molded-in cockpit sink, conveniently located in the passenger area, is upgraded to a single-tap faucet when the optional pressurized transom shower is ordered
- ▶ neutral colored vinyl and a latte dash are set off by a stainless steel steering wheel; the optional Fishing Package includes a built-in tackle box, fishing seat, aerated bow live well, trolling motor mount, and trolling motor panel; bow cushions remove to reveal under seat storage
- ▶ removable aft jump seats provide better angling position; seat backs and lower panels remove for easy access to rear compartments; an optional rigging station mounts amidships; a storage compartment and rear lighted live well are hidden under the hinged rear bench seat



204LF

FISH BOAT

STANDARD SETUP

204LF

FISH BOAT

WITH FISHING PACKAGE

	Length	Beam	Avg Dry Weight (popular engine)	Fuel Capacity	Ice Capacity	Max Capacity
204LF	20' 5"	99"	2510 lbs (115 hp)	34 gal	32+22 qt	9 ppl 1715 lbs



MORE INFORMATION AND PHOTOS AT STINGRAYBOATS.COM/204LF
 photos shown may contain optional equipment; refer to web site for complete details

204LR

SPORT DECK



- ▶ the wide beam of the 204LR provides both a transom walkway for easy boarding and a roomy sunpad; purchase the optional filler cushion to expand the sunpad the full width of the boat
- ▶ a deep bow and curved seating provide optimal comfort (shown with optional desert tan interior)
- ▶ multiple coolers (bow and stern) make it easy for passengers to have drinks at their fingertips
- ▶ a low profile dash increases visibility and is finished with modern earth tones and chrome accents
- ▶ custom sport buckets offer flip-up seating for both the driver and cocaptain
- ▶ available in both outboard (204LR) and sterndrive (208LR) power—take your pick

204LR

SPORT DECK

208LR

SPORT DECK

	Length	Beam	Avg Dry Weight (popular engine)	Fuel Capacity	Ice Capacity	Max Capacity
204LR	20' 5"	99"	2490 lbs (115 hp)	34 gal	32+14 qt	9 ppl 1715 lbs
208LR	20' 8"	99"	2825 lbs (4.3L)	34 gal	32+14 qt	9 ppl 1715 lbs



MORE INFORMATION AND PHOTOS AT STINGRAYBOATS.COM/204LR or [/208LR](http://STINGRAYBOATS.COM/208LR)
 photos shown may contain optional equipment; refer to web site for complete details

212sc

DECK BOAT



212sc

DECK BOAT

- ▶ a wide beam makes this bow as roomy as it looks; the bow platform step-thru is non-skid and houses a beach boarding ladder and anchor storage; flanked between the bow lounges is one of three onboard ice chests
- ▶ an open floor plan allows for easy movement on deck; hidden storage in the side-entry steps, beneath the seats and below the floor, provides plenty of room to store necessities, leaving room for family and friends
- ▶ a freshwater sink is conveniently positioned amidships; a trash receptacle compartment is covered below
- ▶ changing into swimsuits is convenient with the roomy onboard changing compartment; for added passenger convenience, the changing compartment can be upgraded to a head compartment with a porta-potti
- ▶ the swim pods feature removable storage bins and double as a place to store large water toys when not in use

212SC

Length

21' 11"

Beam

102"

Avg Dry Weight
(popular engine)

3100 lbs
(150 hp)

Fuel Capacity

57 gal

Ice Capacity

67+25+45 qt

Max Capacity

12 ppl
2600 lbs



MORE INFORMATION AND PHOTOS AT STINGRAYBOATS.COM/212SC
photos shown may contain optional equipment; refer to web site for complete details

215LR

SPORT DECK



214LR

SPORT DECK

215LR

SPORT DECK

- ▶ a modern latte-colored dash and low profile brow are set off by a sporty three-spoke steering wheel
- ▶ turn the standard roomy bow into a giant lounging area with optional bow filler cushions
- ▶ an entertainment center is complete with freshwater system, removable cooler, and a stylish counter
- ▶ when it's time for snacks, the table can be set up quickly in either the bow or the cockpit
- ▶ the 214LR features two roomy pods; add the transom stereo remote for easy access from the water
- ▶ a spacious head compartment is equipped with built-in shelving, a recessed toilet paper holder, LED lighting, and an opening port light window...and doubles as a changing room

	Length	Beam	Avg Dry Weight (popular engine)	Fuel Capacity	Ice Capacity	Max Capacity
214LR	21' 8"	101"	3114 lbs (150 hp)	46 gal	25+17 qt	11 ppl 2167 lbs
215LR	21' 11"	101"	3705 lbs (5.0L)	46 gal	25+17 qt	11 ppl 2167 lbs



MORE INFORMATION AND PHOTOS AT STINGRAYBOATS.COM/214LR or [/215LR](http://STINGRAYBOATS.COM/215LR)
 photos shown may contain optional equipment; refer to web site for complete details

225LR

SPORT BOAT



225LR

SPORT BOAT

- ▶ sport boat performance and styling with deck boat roominess best describes the 225LR
- ▶ the passenger area features a stylish sport bucket and a latte-colored dash with dual compartments
- ▶ an integrated swim platform is the perfect size for initiating any water sports activity or on-water entertainment; the full-width sundeck can be used for sunbathing or just hanging out with your friends and family
- ▶ the STINGRAY Z-plane hull is up to 30% more efficient than other sport boat hulls...it's also faster and corners better, making it one of the best sport boat values on the market
- ▶ a convenient walk-thru companionway is revealed when the center cushions are removed; if you need extra seating, just quickly re-attach the center cushion

225LR

Length

22' 11"

Beam

100"

Avg Dry Weight
(popular engine)

3364 lbs
(5.0L)

Fuel Capacity

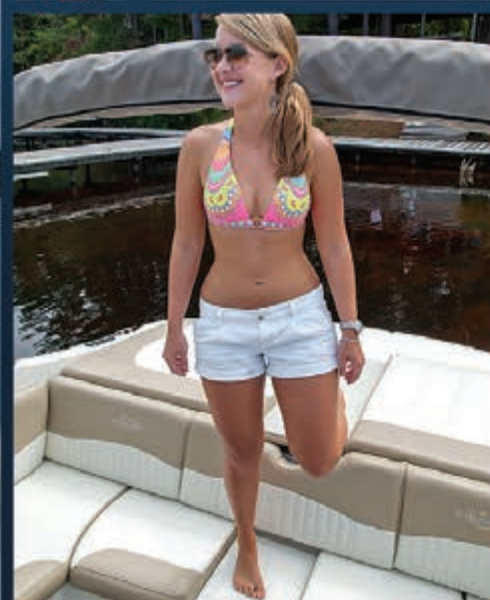
56 gal

Ice Capacity

32+25 qt

Max Capacity

10 ppl
2080 lbs



MORE INFORMATION AND PHOTOS AT STINGRAYBOATS.COM/225LR
photos shown may contain optional equipment; refer to web site for complete details

234LR

SPORT DECK



234LR

SPORT DECK

- ▶ a wide bow provides ample seating and legroom while storage compartments not only serve as steps to the bow, but also house a cooler, a boat fender locker, and a two-step bow ladder with anchor locker combination
- ▶ the on-board head compartment doubles as a changing room when it's time for swimming or water sports
- ▶ the low profile, soft-touch vinyl bow provides increased visibility and reduces glare when underway
- ▶ a pressurized bow shower is conveniently located to wash off dirt and sand before re-entering the boat
- ▶ the 234LR has room for all your friends and family, features a self-bailing, full fiberglass liner for easy cleanup, and provides the ease of maintenance of outboard propulsion

234LR

Length

23' 8"

Beam

101"

Avg Dry Weight
(popular engine)

3648 lbs
(250 hp)

Fuel Capacity

56 gal

Ice Capacity

25+32 qt

Max Capacity

12 ppl
2535 lbs



MORE INFORMATION AND PHOTOS AT STINGRAYBOATS.COM/234LR
photos shown may contain optional equipment; refer to web site for complete details

235LR

SPORT DECK



235LR

SPORT DECK

- ▶ an onboard entertainment center is complete with a freshwater system, sink, removable cooler, and an attractive counter top—it's the perfect setup for entertaining your friends and family
- ▶ a giant floor storage area is large enough for a person to climb inside, but we suggest using it to store a wakeboard or other gear and supplies for a fun day on the water
- ▶ a pressurized bow shower is conveniently located to wash off dirt and sand before re-entering the boat
- ▶ the optional black accent package features a black windshield frame, black gunnel molding, black dash shroud, and black carbon fiber accented gauge panel
- ▶ the onboard head compartment features a porta-potti and doubles as a changing room on the water

235LR

Length

23' 11"

Beam

101"

Avg Dry Weight
(popular engine)

4105 lbs
(5.0 L)

Fuel Capacity

56 gal

Ice Capacity

25+32 qt

Max Capacity

12 ppl
2535 lbs



MORE INFORMATION AND PHOTOS AT STINGRAYBOATS.COM/235LR
photos shown may contain optional equipment; refer to web site for complete details

250LR

SPORT BOAT



250LR

SPORT BOAT

- ▶ a wide u-shaped design provides ample seating room and keeps everyone near the action in the cockpit; filler cushions can be quickly set up to convert the seating area to an oversize sunpad or a sleeping berth
- ▶ whether in the cockpit or bow, a cold beverage is never far away; there are ice chests in the bow and amidships and a removable cooler (can be upgraded to 12-volt refrigerator) to take your party ashore
- ▶ a freshwater system, stainless steel sink, and attractive counter top make up the entertainment area amidships; an optional 12-volt Isotherm refrigerator upgrades an already luxurious interior and keeps your snacks fresh
- ▶ the enclosed head compartment makes this sporty bowrider convenient for a day or night on the water
- ▶ lift the latch just forward of the bow seating to reveal the anchor locker storage area

250LR

Length

25'

Beam

102"

Avg Dry Weight
(popular engine)

4340 lbs
(5.0 L)

Fuel Capacity

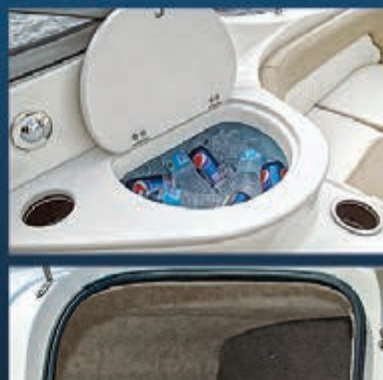
68 gal

Ice Capacity

32+32+25 qt

Max Capacity

10 ppl
2265 lbs



MORE INFORMATION AND PHOTOS AT STINGRAYBOATS.COM/250LR
photos shown may contain optional equipment; refer to web site for complete details

215CR

SPORT DECK



215CR

SPORT DECK

- ▶ the 215CR cabin is built on a fiberglass liner and comfortably sleeps two adults; dual lighting and speakers flank both sides of the cabin mirror; two port holes and a screened deck hatch provide ventilation; a cabinet-size storage locker with a covered storage tray provides space for storing small items; beneath the cushions is a porta-potti, portable stove, and additional storage; the 215CR may qualify you for second home tax status
- ▶ solid cabin doors provide privacy and convenient steps make access to the foredeck convenient and easy
- ▶ a 15" wide walkway leads from the extended swim platform and makes boarding easy for all your passengers
- ▶ an entertainment center includes a freshwater system, a counter top, twin stainless cup holders, and a removable 25-quart Igloo cooler, making it easier to stock drinks or to take the party ashore

215CR

Length

21' 11"

Beam

101"

Avg Dry Weight
(popular engine)

3775 lbs
(5.0 L)

Fuel Capacity

46 gal

Ice Capacity

25 qt

Max Capacity

11 ppl
2167 lbs



MORE INFORMATION AND PHOTOS AT STINGRAYBOATS.COM/215CR
photos shown may contain optional equipment; refer to web site for complete details

225CR

CUDDY CABIN



225CR

CUDDY CABIN

- ▶ a step-down cabin entry leads to a spacious V-berth with built-in speakers, four-point adjustable lighting, and a storage cabinet; raise the cushions to reveal a porta-potti, portable butane stove, and additional storage
- ▶ built-in fiberglass steps lead to a non-skid foredeck for easy access when docking or dropping anchor
- ▶ solid cabin doors provide privacy; sport buckets with a flip-up bolster are standard port and starboard
- ▶ a convenient walk-thru companionway is revealed when the center cushions are removed; if you need extra seating, just quickly re-attach the center cushion
- ▶ this cuddy is packed with amenities, including a standup bimini top, and offers a deep cockpit design

225CR

Length

22' 11"

Beam

100"

Avg Dry Weight
(popular engine)

3539 lbs
(5.0 L)

Fuel Capacity

56 gal

Ice Capacity

25 qt

Max Capacity

10 ppl
2080 lbs



MORE INFORMATION AND PHOTOS AT STINGRAYBOATS.COM/225CR
photos shown may contain optional equipment; refer to web site for complete details

225sx

SPORT BOAT



225sx

SPORT BOAT

- ▶ custom deck graphics, chrome model designators, and a tinted aluminum deck hatch add sport boat appeal
- ▶ a sporty low profile dash brow shields gauges from the sun for improved visibility when underway
- ▶ bow access steps lift to allow easy cabin access; solid cabin doors provide extra cabin privacy
- ▶ the 225SX sport boat cabin comfortably sleeps two adults and is appointed with luxurious vinyl and rich latte colored accents; the cushions lift easily to reveal a porta-potti beneath
- ▶ a full-size, sporty sundeck also serves as a walk-way when the center cushions are removed
- ▶ the optional black accent package features a black windshield frame, black dash, and black carbon fiber accents

225SX

Length	Beam	Avg Dry Weight (popular engine)	Fuel Capacity	Ice Capacity	Max Capacity
22' 11"	100"	3225 lbs (5.0 L)	56 gal	32+25 qt	10 ppl 2080 lbs



MORE INFORMATION AND PHOTOS AT STINGRAYBOATS.COM/225SX
 photos shown may contain optional equipment; refer to web site for complete details

235CR

SPORT DECK



235CR

SPORT DECK

- ▶ luxurious two-tone vinyl and optional drop-in carpet create an upscale look; sporty buckets with flip-up bolsters, swivels, and sliders provide comfort and optimal legroom for both the captain and cocaptain
- ▶ a cabinet-size storage locker is just inside the roomy cabin; sport deck width ensures plenty of room for comfortable sleeping; lift the cabin cushions to reveal the porta-potti, butane stove, and additional storage
- ▶ the cockpit features a wide sunpad, wrap-around seating, a 15" wide transom entryway, and an entertainment center complete with freshwater system, counter top, and a 25-quart removable cooler
- ▶ the transom wash down is convenient for removing dirt and sand before entering the boat
- ▶ integrated fiberglass steps lead from the cockpit to the bow for easy access for docking and dropping anchor

235CR

Length

23' 11"

Beam

101"

Avg Dry Weight
(popular engine)

4175 lbs
(5.0 L)

Fuel Capacity

56 gal

Ice Capacity

25 qt

Max Capacity

12 ppl
2535 lbs



MORE INFORMATION AND PHOTOS AT STINGRAYBOATS.COM/235CR
photos shown may contain optional equipment; refer to web site for complete details

250CR

CUDDY CABIN



250CR

CUDDY CABIN

- ▶ the helm features a split-console design that reserves room for an aftermarket plotter; switches and controls are at the captain's fingertips and surrounded by a rich latte color and finished with a sporty three-spoke wheel
- ▶ to maximize cabin space, the cabin is level with the cockpit floor; cushions lift to reveal accessories, storage, and a porcelain head; a storage closet and multiple cubby holes provide an abundance of storage space
- ▶ an onboard cooler and an entertainment center are placed amidships for easy access when the cocktail table is set up for drinks and snacks; when not in use, the table stores beneath the corner seat
- ▶ wrap-around seating provides room for your passengers to stretch out and enjoy the ride; sport buckets with flip-up bolsters provide comfort for the captain and cocaptain; interior shown in optional desert tan vinyl

250CR

Length

25'

Beam

102"

Avg Dry Weight
(popular engine)

4293 lbs
(5.0 L)

Fuel Capacity

68 gal

Ice Capacity

32+25 qt

Max Capacity

10 ppl
2265 lbs



MORE INFORMATION AND PHOTOS AT STINGRAYBOATS.COM/250CR
photos shown may contain optional equipment; refer to web site for complete details

250cs

CABIN CRUISER



250cs

CABIN CRUISER

- ▶ preparing meals is easy with this well-planned and fully equipped galley; it features multiple storage cabinets, a solid counter top, a sink, smooth surface stove, microwave oven, refrigerator, and more; a dinette table is stowed under the center cushion; mid-cabin access is easy with an expanded entryway and sloped overhead; the airy mid-cabin features interior lighting and a screened opening
- ▶ unique seating options create seating choices for everyone; drop-in carpet is optional
- ▶ the cockpit features a well appointed dash and sporty three-spoke steering wheel, an entertainment center, an onboard 32-quart cooler, and a removable Igloo cooler for taking the party ashore; PlasDeck flooring is optional
- ▶ the 250CS is large enough for weekend trips but small enough to be trailerable to your favorite destinations

250CS

Length	Beam	Avg Dry Weight (popular engine)	Fuel Capacity	Ice Capacity	Max Capacity
25'	102"	4971 lbs (5.0 L)	66 gal	32+25 qt	10 ppl 2265 lbs



MORE INFORMATION AND PHOTOS AT STINGRAYBOATS.COM/250CS
 photos shown may contain optional equipment; refer to web site for complete details

STANDARDS & OPTIONS

	OPTION #	180RX	188LE	191RX	225LR	250LR	194LX	198LX	204LR	208LR	214LR	215LR	234LR	235LR	192SC	212SC	188LF	194LF	198LF	204LF	215CR	225CR	225SX	235CR	250CR	250CS	
		SPORT BOAT					SPORT DECK							DECK BOAT	FISH BOAT				CUDDY / CRUISER								
5-Year Hull Protection Plan	-	S	S	S	S	S	S	S	S	S	S	S	S	S	S	S	S	S	S	S	S	S	S	S	S	S	
3-Year Hull Blister Protection Plan	-	S	S	S	S	S	S	S	S	S	S	S	S	S	S	S	S	S	S	S	S	S	S	S	S	S	
Exclusive Z-Plane Hull	-	S	S	S	S	S	S	S	S	S	S	S	S	S	S	S	S	S	S	S	S	S	S	S	S	S	
Certifications: NMMA, USCG	-	S	S	S	S	S	S	S	S	S	S	S	S	S	S	S	S	S	S	S	S	S	S	S	S	S	
Auto / Manual Bilge Pump (1100 gph)	-	-	-	-	S	S	-	-	-	-	S	S	S	S	S	S	-	-	-	-	S	S	S	S	S	S	
Opening Cabin Windows with Screen	-	-	-	-	-	2 ea	-	-	-	-	2 ea	2 ea	2 ea	2 ea	-	-	-	-	-	-	3 ea	3 ea	-	3 ea	3 ea	8 ea	
Solid Color Deck and Hull - Red	1	-	-	-	-	-	-	-	-	-	-	-	-	-	-	-	-	-	-	-	-	-	1500	-	-	-	
Full Hull Color Band	50	-	577	-	577	737	577	577	577	577	608	608	608	608	608	608	577	577	577	577	608	577	577	608	737	737	
Hull Bottom Color (5 color choices)	390-394	-	300	-	300	408	300	300	300	300	331	331	331	331	331	331	300	300	300	300	331	300	300	331	408	408	
Hull Graphic Sweep - Black	-	-	S	-	S	S	S	S	S	S	S	S	S	S	S	S	S	S	S	S	S	S	S	S	S	S	
Hull Graphic Sweep - Red or Yellow	336/335	-	192	-	192	192	192	192	192	192	192	192	192	192	192	192	192	192	192	192	192	192	192	192	192	192	
CE Certification Package with Shipping Cradle	90	877	954	877	954	954	954	954	954	954	954	954	954	954	-	954	954	954	954	954	954	954	954	954	954	954	
Shipping Cradle (export only)	31	508	508	508	508	508	508	508	508	508	508	508	508	508	508	508	508	508	508	508	508	508	508	508	508	508	
Electric Trim Tabs with LED Indicator	56	-	-	-	1062	1062	-	-	-	-	1062	1062	1062	1062	-	-	-	-	-	-	1062	1062	1062	1062	1062	1062	
Hydraulic Trim Tabs with LED Indicator	68	-	-	-	985	985	-	-	-	-	985	985	985	985	-	-	-	-	-	-	985	985	985	985	985	985	
Stainless Steel Sport Trim Tabs (fixed)	57	-	100	100	-	-	-	-	100	100	-	-	-	-	-	-	100	-	-	100	-	-	-	-	-	-	
Pressurized Bow and Transom Shower	70	-	-	-	-	-	-	-	-	-	S	S	S	S	498	498	-	-	-	-	-	-	-	-	-	-	
Pressurized Water with Transom Shower	69	-	-	-	422	S	-	-	422	422	-	-	-	-	-	-	-	-	-	422	S	291	-	S	S	S	
DECK	Stainless Steel Bow Rails	-	-	-	-	-	-	-	-	-	-	-	-	-	-	-	-	-	-	-	S	S	-	S	S	S	
	Stainless Steel Rod Holders	-	-	-	-	-	-	-	-	-	-	-	-	-	-	-	-	-	-	S	-	-	-	-	-	-	
	Bow Anchor Storage	-	-	-	-	S	S	-	-	S	S	S	S	S	S	S	-	-	-	S	S	S	-	S	S	S	
	Enclosed Head with Vent Window & Lighting	-	-	-	-	S	-	-	-	-	S	S	S	S	-	S	-	-	-	-	-	-	-	-	-	S	
	Lockable Cabin Doors	-	-	-	-	-	-	-	-	-	-	-	-	-	-	-	-	-	-	-	S	S	S	S	S	S	
	Cabin Windows with Stainless Steel Frame	-	-	-	-	-	-	-	-	-	-	-	-	-	-	S	-	-	-	-	-	-	-	-	-	-	
	Stainless Steel Multi-Step Transom Ladder	-	-	S	-	S	S	S	S	S	S	S	S	S	S	S	S	S	S	S	S	S	S	S	S	S	
	Stainless Steel Multi-Step Bow Ladder	-	-	-	-	-	-	S	S	S	S	S	S	S	S	S	S	-	-	-	-	S	-	S	-	-	
	Stainless Steel Spring Line Cleats	-	S	S	S	S	S	S	S	S	S	S	S	S	S	S	S	S	S	S	S	S	S	S	S	S	
	Stainless Steel LED Docking Lights	313	-	-	-	311	311	311	311	311	311	S	S	S	S	311	311	-	311	311	311	S	311	311	S	311	311
	Windshield with Side Vent Windows	-	-	S	-	S	S	S	S	S	S	S	S	S	S	-	-	S	S	S	S	S	S	-	S	S	S
	Windshield Wiper (Starboard)	25	-	-	-	-	-	-	-	-	-	-	-	-	-	-	-	-	-	-	-	-	-	-	-	306	
	Stainless Steel Custom Ski Tow (removable)	670	-	-	500	-	-	500	-	500	-	500	-	500	-	500	500	-	S	-	-	500	-	-	-	-	-
	Wakeboard Tower (Silver)	661	-	-	-	2146	-	-	-	2146	2146	2146	2146	2146	2146	-	-	-	-	-	2146	-	-	-	-	-	-
	Wakeboard Tower (Black)	662	-	-	-	2385	-	-	-	2385	2385	2385	2385	2385	2385	-	-	-	-	-	2385	-	-	-	-	-	-
	COCKPIT	25-Quart Removable Igloo Cooler	-	-	-	-	S	S	-	-	-	-	S	S	S	S	S	-	-	-	-	-	S	S	-	S	S
		Backlit Instruments with Circuit Breakers	-	S	S	S	S	S	S	S	S	S	S	S	S	S	S	S	S	S	S	S	S	S	S	S	S
Dash Accessory Plug (12V)		-	S	S	S	S	S	S	S	S	S	S	S	S	S	S	S	S	S	S	S	S	S	S	S	S	
Electronic Engine Hour Meter		-	-	S	-	S	S	S	S	S	S	S	S	S	S	S	S	S	S	S	S	S	S	S	S	S	
Indirect LED Cockpit Lighting		-	-	S	-	S	S	S	S	S	S	S	S	S	S	S	S	S	S	S	S	S	S	S	S	S	
Premium Stain-Resistant Vinyl		-	S	S	S	S	S	S	S	S	S	S	S	S	S	S	S	S	S	S	S	S	S	S	S	S	
Helm Seats with Fore and Aft Adjustors		-	-	S	-	S	S	S	S	S	S	S	S	S	S	S	S	S	S	S	S	S	S	S	S	S	
Ignition Switch with Stereo Accessory Remote		-	S	S	-	S	S	-	S	-	S	-	S	-	S	S	S	-	S	-	S	S	S	S	S	S	
Teak Cockpit Table (upgrade)		94	-	-	-	275	275	-	-	-	-	275	275	275	275	-	275	-	-	-	-	275	275	-	275	275	275
Self-Bailing Cockpit		-	-	-	-	-	S	-	-	-	-	S	S	S	S	S	S	-	-	-	-	S	-	-	S	S	S
Throttle-Trim Control with Safety Switch	-	S	S	S	S	S	S	S	S	S	S	S	S	S	S	S	S	S	S	S	S	S	S	S	S	S	
Digital Depth Finder with Depth Alarm	48	-	358	-	358	358	358	358	358	358	358	358	358	358	358	358	358	358	358	358	358	358	358	358	358		
Hi-Power Jensen Bluetooth Audio System	-	-	-	-	S	S	-	-	-	-	S	S	S	S	S	S	-	-	-	-	S	S	S	S	S	S	
Stereo Remote(s)	75	-	-	-	185	185	-	-	-	-	323	323	323	323	-	323	-	-	-	-	185	185	185	185	185	185	

S Denotes Standard
- Denotes Not Available.
ea Indicates quantity, not dollars.
Prices and specifications subject to change.
Only the most popular standard and optional equipment items are shown.
For the current and complete list of items, visit stingrayboats.com/options.



Full Function Head with Sink, Shower, Storage, and Opening Vent Window (250CS)



Polk Audio Systems
(Options #730 - 500w and #731 - 200w)



Sport Bucket with Flip-Up Bolster



Custom Dash with Backlit Instruments
and Stainless Steel Accents



Stainless Steel Hardware Package (Option #820)
Items vary by model. Refer to the footnote
on page 46 for complete package details.



Recessed Speakers and
Convenient Drink Holders



25-quart Removable Cooler (192SC, 212SC,
214LR, 215CR, 215LR, 225CR, 225LR, 234LR,
235CR, 235LR, 250CR, 250LR, 250CS)



Floor Storage with Non-Skid Lid
and Stainless Steel Shock Assist



Integrated Bow Steps and Lockable
Cabin Door (215CR shown)



Walk-Thru Removable Filler
Cushion (Option #47 or #77)



RX Interior (outboard) - Bucket Seats
and Bench Seating



RX Interior (sterndrive) - Bucket Seats,
Bench Seating, & Sundeck



Sport Deck Interior (outboard) - Bucket Seats,
Wrap-around Seating, & Sundeck



Stainless Steel Port Windows



Slide-out Bow Ladder, Fender Storage, and Anchor
Storage (Sport Deck Bowrider Models)



Sport Deck Interior (sterndrive) - Bucket Seats,
Wrap-around Seating, & Sundeck



225 Models Interior - Bucket Seats, Wrap-around
Bench Seating, & Center Walk-Thru Sundeck

STANDARDS & OPTIONS

		OPTION #	180RX	188LE	191RX	225LR	250LR	194LX	198LX	204LR	208LP	214LR	215LR	234LR	235LR	192SC	212SC	188LF	194LF	198LF	204LF	215CR	225CR	225SX	235CR	250CR	250CS
			SPORT BOAT					SPORT DECK							DECK BOAT		FISH BOAT				CUDDY / CRUISER						
COCKPIT	Polk 200w Audio System w/ Remote(s)	731	-	-	-	1075	1162	-	-	1162	1162	1162	1162	1162	1162	1162	1162	-	-	-	1162	1075	1075	1075	1075	1075	1075
	Polk 500w w/ 10" Sub & Amp w/ Remote(s)	730	-	-	-	-	2654	-	-	-	-	2654	2654	2654	2654	-	-	-	-	-	-	-	-	2654	-	-	-
	Adjustable Pedestal(s) - for 1 or 2 Seats	86/83	-	-	-	-	169	-	-	-	-	169	169	169	169	-	-	-	-	-	-	169	169	-	169	169	85
	Sport Bucket with Bolster	26	-	-	-	-	-	-	-	-	-	-	-	-	-	-	S	-	-	-	-	-	-	-	-	-	S
	Twin Sport Bucket with Bolster	82	-	431	-	S	S	431	431	431	431	S	S	S	S	S	-	-	431	431	431	431	S	S	S	S	S
	Bow Fishing Seat w/ Pedestal	81	-	-	-	-	-	-	-	-	-	-	-	-	-	-	-	-	-	-	292	-	-	-	-	-	-
	Fiberglass Cockpit Floor Liner	46	-	S	-	S	S	S	S	S	S	S	S	S	S	S	S	S	S	S	S	S	S	S	S	S	S
	Snap-In Carpet	33	-	600	-	600	654	600	600	600	600	654	654	654	654	600	600	600	600	600	600	600	600	600	600	600	600
	PlasDeck - Cockpit and Swim Platform	95	-	-	-	-	-	-	-	-	-	-	-	-	-	-	-	-	-	-	-	-	-	-	-	-	2908
	Table with Bow and Cockpit Mounts	76	-	-	-	S	S	-	-	346	262	S	S	S	S	346	S	-	-	-	-	S	S	-	S	S	S
	Rigging Station w/ Offset Pedestal	74	-	-	-	-	-	-	-	-	-	-	-	-	-	-	-	-	-	-	-	168	-	-	-	-	-
Freshwater Sink - Cockpit	-	-	-	-	-	S	-	-	-	-	S	S	S	S	S	S	-	-	-	-	152	S	-	-	S	S	
Refrigerator - Cockpit	710	-	-	-	-	1369	-	-	-	-	-	-	-	-	-	-	-	-	-	-	-	-	-	-	1369	-	
Filler Cushion - Aft Walkthru	47	-	-	-	S	S	-	-	-	-	-	346	-	346	-	-	-	-	-	-	-	346	S	S	346	S	
Filler Cushion - Aft Walkthru & Seat	77	-	500	-	-	-	500	500	500	500	-	-	-	-	-	-	500	500	500	-	-	-	-	-	-	-	
Filler Cushion - Bow / Cabin	84	-	331	-	331	331	331	331	331	331	331	331	331	331	377	377	331	331	331	331	S	S	-	S	S	-	
Cabin Lights	-	-	-	-	-	-	-	-	-	-	-	-	-	-	-	-	-	-	-	-	S	S	S	S	S	S	
LED TV / DVD System	725	-	-	-	-	-	-	-	-	-	-	-	-	-	-	-	-	-	-	-	-	-	-	-	-	1377	
SS Butane Stove with Case & Auto Light	-	-	-	-	-	-	-	-	-	-	-	-	-	-	-	-	-	-	-	-	-	S	S	-	S	S	
Enclosed Head with Shower	-	-	-	-	-	-	-	-	-	-	-	-	-	-	-	-	-	-	-	-	-	-	-	-	-	S	
Freshwater Sink - Cabin	-	-	-	-	-	-	-	-	-	-	-	-	-	-	-	-	-	-	-	-	-	S	-	-	-	S	
Molded Fiberglass Cabin Liner	-	-	-	-	-	S	-	-	-	-	S	S	S	S	S	-	-	-	-	-	-	S	S	-	S	S	
Porta-Potti with Level Indicator	-	-	-	-	-	S	-	-	-	-	S	S	S	S	S	-	146	-	-	-	-	S	S	S	S	-	
Porcelain Head with Holding Tank	-	-	-	-	-	-	-	-	-	-	-	-	-	-	-	-	-	-	-	-	-	-	-	-	S	S	
Porta-Potti with Dockside Pumpout	38	-	-	-	-	185	-	-	-	-	185	185	185	185	185	-	323	-	-	-	-	185	185	-	185	185	
Overboard Discharge w/ Macerator	35	-	-	-	-	-	-	-	-	-	-	-	-	-	-	-	-	-	-	-	-	-	-	-	-	449	
220V Electrical System (export only) ^	27	-	-	-	-	-	-	-	-	-	-	-	-	-	-	-	-	-	-	-	-	-	-	-	-	500	
220V Hot Water System	29	-	-	-	-	-	-	-	-	-	-	-	-	-	-	-	-	-	-	-	-	-	-	-	-	763	
Automatic Fire Extinguishing System	19	472	672	-	672	672	-	672	-	672	-	672	-	672	-	-	672	-	672	-	672	672	672	672	672	672	
Battery Charger (110V)	41	-	208	-	208	208	208	208	208	208	208	208	208	208	208	208	208	208	208	208	208	208	208	208	208	-	
Battery On / Off Switch with Safety Key	36	-	105	-	105	105	105	105	105	105	105	105	105	105	105	105	105	105	105	105	105	105	105	105	105	S	
Dual Battery System with VSR & Switch	30	-	-	-	285	285	-	-	-	-	285	285	285	285	285	285	285	-	-	-	-	285	285	285	285	S	
Power Trim and Tilt with Indicator	-	S	S	S	S	S	S	S	S	S	S	S	S	S	S	S	S	S	S	S	S	S	S	S	S	S	
Remote Oil Change System (Dipstick Style)	-	S	S	-	S	S	-	S	-	S	-	S	-	S	-	-	S	-	S	-	S	S	S	S	S	S	
Transom Mounted Trim & Tilt Switch	40	-	-	-	S	S	-	-	-	-	-	S	-	S	-	-	-	-	-	-	-	S	S	S	S	S	
Hydraulic Tilt Steering (up to 150 hp)	620	-	-	-	-	-	1346	-	1346	-	1346	-	S	-	1346	1346	-	1346	-	1346	-	1346	-	-	-	-	
Hydraulic Tilt Steering (175+ hp)	621	-	-	-	-	-	-	-	-	-	1346	-	S	-	-	1346	-	-	-	-	-	-	-	-	-	-	
Hydraulic Tilt Steering (Mercury)	622	-	-	-	-	-	1346	-	1346	-	1346	-	S	-	1346	1346	-	1346	-	1346	-	1346	-	-	-	-	
Power Steering (Engine Driven)	-	S	S	-	S	S	-	S	-	S	-	S	-	S	-	-	S	-	S	-	S	S	S	S	S	S	
Tilt Steering with Locking Detent	39	-	183	-	S	S	183	183	183	183	S	S	S	S	183	S	183	183	183	183	S	S	S	S	S	S	
Zero Torque Steering	-	-	-	-	-	-	S	-	S	-	S	-	-	-	S	S	-	S	-	S	-	-	-	-	-	-	
Value Package ¹	805	1149	-	-	1149	-	-	-	-	-	-	-	-	-	-	-	-	-	-	-	-	-	-	-	-	-	
Preferred Equipment Group ²	810	-	215	-	-	-	215	215	215	215	-	-	-	-	-	-	215	215	215	215	-	-	-	-	-	-	
Premium Option Group ³	815	-	1969	-	-	-	1969	1969	1969	1969	-	-	-	-	-	-	1969	1969	1969	1969	-	-	-	-	-	-	
Stainless Steel Hardware Package ⁴	820	-	340	-	340	340	340	340	340	340	340	340	340	340	340	340	340	340	340	340	340	340	340	340	340	340	
Black Accent Package ⁵	818	-	-	-	-	762	762	-	-	762	762	762	762	762	762	-	454	-	-	-	762	762	762	762	762	762	
Fishing Package ⁶	802	-	-	-	-	-	-	-	-	-	-	-	-	-	-	915	915	-	-	-	885	-	-	-	-	-	
MyStingray.com Personal Web Site	-	S	S	S	S	S	S	S	S	S	S	S	S	S	S	S	S	S	S	S	S	S	S	S	S	S	

S Denotes Standard

- Denotes Not Available

A Electrical System includes:
25 ft shorepower cable, battery
charger, refrigerator, alcohol /
electric stove.

1 Value Package items vary
by model and may include
- Transom Mounted Tilt Switch
- Auto / Manual Bilge Pump (1100 gph)
- Bluetooth Marine Audio w/MP3 Port
- Bimini Top Stand-Up w/Boat
- Helm Seats w/ Fore & Aft Adj.
- Indirect LED Cockpit Lighting
- Stainless Steel MultiStep Aft Ladder
- Zero Torque Steering

2 Preferred Equipment Group items
vary by model and may include:
- Tilt Steering with Locking Detent
- Transom Mounted Tilt Switch
- Console Storage Door
- Auto / Manual Bilge Pump (1100 gph)

3 Premium Option Group items
vary by model and may include:
- Digital Depth Finder with Depth Alarm
- Flooring — Snap-in Carpet
- Twin Sport Bucket with Bolster
- Stand-up Bimini Top with Boot

4 Stainless Steel Hardware Package
items vary by model and may include:
- SS Windshield Supports
- Cabin Windows w/ SS Frame
- SS Vent Covers
- SS Ski Tow (flush mount)
- SS Rub Rail Molding
- SS Bimini Top Quick Connects
- SS Cup Holders
- SS Grab Handles
- SS Dash Rail

5 Black Accent Package items
vary by model and may include:
- Black Windshield Frame
- Black Gunnel Molding
- Black Deck Hatch
- Black Dash Shroud
- Black Carbon Fiber Accented
Gauge Panel

6 Fishing Package items
vary by model and may include:
- Trolling Motor Mount (removable)
- Trolling Motor Plug
- Wired Trolling Motor Panel
- Aerated Live Well
- Fishing Seat(s)
- SS Rod Holders Aft (4)

Prices and specifications subject to
change.

Only the most popular standard and
optional equipment items are shown.

For the current and complete list of
items, visit stingrayboats.com/options



PlasDeck (Option #95)
(for 250CS Cockpit and Swim Platform)



Freshwater Sink, Counter Top Area, and 25-quart
Removable Cooler (234LR shown)



Molded Fiberglass Cabin Liner with Storage,
Butane Stove, and Porta Potti (215CR shown)



Black Accent Package (Option #818) - Items vary by model. Refer
to the footnote on page 46 for complete package details.



Isotherm 12v Refrigerator (Option #710)
(Available for 250LR and 250CR)



Teak Cockpit Table Upgrade (Option #94)
(250CS shown)



Ivory Interior (no charge option)



Desert Tan Interior (no charge option)



Ice Chest Under Walk-Thru Step (varies by model)



Aft Cabin with Full Size Bed (bedding and pillows
not included) and Opening Vent Window (250CS)



Cockpit Filler Cushions (250LR and 250CR)
(shown with optional desert tan interior)



Bow Filler Cushions (Option #84)



Bow Ice Chest (sizes and styles vary)



Cockpit Table with Floor Mount (Option #76)

CANVAS

CANVAS IS MADE OF HIGH QUALITY SUNBRELLA MATERIAL	OPTION #	180RX	188LE	191RX	225LR	250LR	194LX	198LX	204LR	208LR	214LR	215LR	234LR	235LR	192SC	212SC	188LF	194LF	198LF	204LF	215CR	225CR	225SX	235CR	250CR	250CS
		SPORT BOAT					SPORT DECK								DECK BOAT		FISH BOAT				CUDDY / CRUISER					
Optional Canvas Color	66	S	146	S	146	146	146	146	146	146	146	146	146	146	146	146	146	146	146	146	146	146	146	146	146	146
Stand-up Bimini Top with Boot	65	-	800	-	S	S	800	800	800	800	S	S	S	S	S	S	800	800	800	800	S	S	-	S	S	S
Stand-up Forward Bimini Top	64	-	-	-	-	-	-	-	-	-	-	-	-	-	800	800	-	-	-	-	-	-	-	-	-	-
Cockpit and Bow Cover	17	692	751	692	751	1006	751	751	751	751	1006	1006	1006	1006	-	-	751	751	751	751	-	-	-	-	-	-
Cockpit Cover	13	-	525	-	525	702	525	525	525	525	702	702	702	702	915	915	525	525	525	525	702	525	525	702	702	702
Cockpit Cover for Wakeboard Tower	73	-	-	-	569	-	-	-	569	569	748	748	748	748	-	-	-	-	-	569	-	-	-	-	-	-
Bow Cover	18	-	228	-	228	305	228	228	228	228	305	305	305	305	-	-	228	228	228	228	-	-	-	-	-	-
Camper Canvas (2 tops, 4 sides, and aft)	15	-	-	-	-	-	-	-	-	-	1300	1300	1300	1300	-	-	-	-	-	-	1300	-	-	1300	-	1500
Full Canvas Set	4	-	-	-	-	1134	-	-	-	-	-	1062	-	1134	-	-	-	-	-	766	766	529	-	829	829	-
Full Canvas Set (wakeboard tower)	6	-	-	-	-	-	-	-	-	-	-	1062	-	1134	-	-	-	-	-	-	-	-	-	-	-	-
Side Curtains (for top enclosure)	16	-	-	-	269	269	-	-	-	-	269	269	269	269	-	-	-	-	-	269	269	269	-	269	269	269
Walk-Thru Flap	14	-	105	-	105	105	105	105	105	105	105	105	105	105	-	-	105	105	105	105	-	-	-	-	-	-

NOTE: Options 4 and 15 include a bow cover.

S Denotes Standard
- Denotes Not Available

Prices and specifications subject to change. Only the most popular standard and optional equipment items are shown. For the current and complete list of items, visit stingrayboats.com/options



Stand-up Bimini Top (shown in standard latte) with Windshield Connector (not shown) - Option #65



Stand-up Bimini Top (shown in optional black) with Windshield Connector (not shown) - Option #65



Cockpit Cover (shown in optional black) - Option #13, Bow Cover - Option #18



Camper Canvas (shown in standard latte) (215LR shown) - Option #15



Stand-up Forward Bimini Top (shown in optional black) - Option #64 - attaches to front of the standard deck boat Stand-up Bimini Top (192SC shown)



Bow Cover (shown in standard latte) - Option #18



Walk-Thru Flap (shown in red) - Option #14



Full Canvas Set (shown in optional black) - Option #4



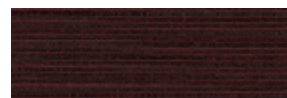
Latte



Black



Blue



Crimson



Red

Standard canvas color is latte. Color canvas is an optional up-charge exchange.

The exceptions are the 180RX and 191RX models. Black canvas is optional and is the only color available for the RX models.

Refer to the chart above for complete details.

HULL GRAPHICS / GELCOAT COLORS

The listings below represent popular gelcoat and decal combinations. To view other combinations, visit our online Build Your Boat feature at <http://stingrayboats.com/buildboat>.



Black Full Hull Color Band with Standard Bottom



Blue Full Hull Color Band with Standard Bottom



Red Full Hull Color Band with Standard Bottom



Crimson Full Hull Color Band with Standard Bottom



Latte Full Hull Color Band with Standard Bottom



Blue Full Hull Color Band with Standard Bottom and Yellow Sweep



Black Full Hull Color Band with Standard Bottom and Red Sweep



Latte Full Hull Color Band with Standard Bottom and Red Sweep



Red Full Hull Color Band with Black Bottom



Latte Full Hull Color Band with Black Bottom



Standard Hull Color with Red Bottom



Black Full Hull Color Band with Red Bottom



Black Full Hull Color Band with Black Bottom and Red Sweep



Latte Full Hull Color Band with Latte Bottom

Full Hull Color Band (option #50), Hull Bottom Color (options #390 - #394), and Hull Graphic Sweeps (options #335 and #336) are available on every model, with the exception of the 180RX and 191RX models.

Half Hull Color Band (option #51) (see page 6) is available on the 180RX, 191RX, and 204LF models.

Solid Red Deck and Hull (option #1) (see page 36) is available on the 225SX.

See page 44 for option pricing and additional gelcoat color and decal option details. Graphic options vary by model; visit stingrayboats.com/buildboat for details. Due to printing and paper variances, colors shown may not be accurately represented.



ACTIONWEAR

costore.com/stingrayboats

View our entire line of clothing and accessories online. We offer a variety of premium quality items for the entire family!



MODEL SPECIFICATIONS

		LENGTH OVERALL	BEAM	BRIDGE CLEARANCE	DRY WEIGHT ^A (w/ popular engine)	FUEL CAPACITY	WATER CAPACITY	ICE BOX / COOLER CAPACITY	ICE BOX / LIVEWELL CAPACITY	MAX CAPACITY	MOLDED DEPTH (w/ windshield base to keel)	MAX DEPTH (w/ windshield)	MAX DRAFT (drive down)	MAX DRAFT ^B (drive up)	COCKPIT DEPTH (at helm)	SLEEPING CAPACITY	DEADRISE ANGLE		
180RX	SPORT BOATS	18 ft	85 in	41 in	2219 lbs	21 gal		14 qt		7 ppl / 1070 lbs	42 in	52 in	29 in	18 in	28 in		19°		
		5.5 m	216 cm	104 cm	3.0 L	79 L		13 L		7 ppl / 485 kg	107 cm	132 cm	74 cm	46 cm	71 cm		19°		
		18 ft, 11 in	88 in	45 in	2350 lbs	21 gal		32+22 qt		7 ppl / 1100 lbs	46 in	58 in	29 in	18 in	30 in		19°		
		5.8 m	224 cm	114 cm	3.0 L	79 L		30+21 L		7 ppl / 499 kg	117 cm	147 cm	74 cm	46 cm	76 cm		19°		
		19 ft, 3 in	91 in	47 in	2100 lbs	34 gal		14 qt		8 ppl / 1670 lbs	44 in	55 in		17 in	29 in		19°		
		5.9 m	231 cm	119 cm	90 hp	129 L		13 L		8 ppl / 757 kg	112 cm	140 cm		43 cm	74 cm		19°		
		22 ft, 11 in	100 in	52 in	3364 lbs	56 gal	6 gal (opt)	32+25 qt		10 ppl / 2080 lbs	51 in	58 in	33 in	18 in	33 in		20°		
		7.0 m	254 cm	132 cm	5.0 L	212 L	23 L (opt)	30+24 L		10 ppl / 943 kg	130 cm	147 cm	84 cm	46 cm	84 cm		20°		
225LR	SPORT BOATS	25 ft	102 in	65 in	4340 lbs	68 gal	17 gal	32+32+25 qt		10 ppl / 2265 lbs	66 in	77 in	34 in	17 in	36 in		21°		
		7.6 m	259 cm	165 cm	5.0 L	257 L	64 L	30+30+24 L		10 ppl / 1027 kg	168 cm	196 cm	86 cm	43 cm	91 cm		21°		
		19 ft, 6 in	94 in	47 in	2325 lbs	34 gal	6 gal (opt)	32+14 qt		9 ppl / 1965 lbs	47 in	59 in		18 in	31 in		19°		
		5.9 m	239 cm	119 cm	115 hp	129 L	23 L (opt)	30+13 L		9 ppl / 891 kg	119 cm	150 cm		46 cm	79 cm		19°		
		19 ft, 9 in	94 in	47 in	2662 lbs	34 gal	6 gal (opt)	32+14 qt		9 ppl / 1450 lbs	47 in	59 in	32 in	18 in	31 in		19°		
		6 m	239 cm	119 cm	4.3 L	129 L	23 L (opt)	30+13 L		9 ppl / 657 kg	119 cm	150 cm	81 cm	46 cm	79 cm		19°		
		20 ft, 5 in	99 in	49 in	2490 lbs	34 gal	6 gal (opt)	32+14 qt	44 qt	9 ppl / 1715 lbs	48 in	62 in		18 in	32 in		20°		
		6.2 m	250 cm	125 cm	115 hp	129 L	23 L (opt)	30+13 L	42 L	9 ppl / 778 kg	122 cm	158 cm		46 cm	81 cm		20°		
208LR	SPORT DECKS	20 ft, 8 in	99 in	49 in	2825 lbs	34 gal	6 gal (opt)	32+14 qt	44 qt	9 ppl / 1715 lbs	48 in	62 in	34 in	18 in	32 in		20°		
		6.3 m	250 cm	125 cm	4.3 L	129 L	23 L (opt)	30+13 L	42 L	9 ppl / 778 kg	122 cm	158 cm	86 cm	46 cm	81 cm		20°		
		21 ft, 8 in	101 in	58 in	3114 lbs	46 gal	13 gal	25+17 qt	44 qt	11 ppl / 2167 lbs	58 in	72 in		17 in	34 in		21°		
		6.6 m	257 cm	147 cm	150 hp	174 L	49 L	24+16 L	42 L	11 ppl / 983 kg	147 cm	183 cm		43 cm	86 cm		21°		
		21 ft, 11 in	101 in	58 in	3705 lbs	46 gal	13 gal	25+17 qt	44 qt	11 ppl / 2167 lbs	58 in	72 in	34 in	17 in	34 in		21°		
		6.7 m	257 cm	147 cm	5.0 L	174 L	49 L	24+16 L	42 L	11 ppl / 983 kg	147 cm	183 cm	86 cm	43 cm	86 cm		21°		
		23 ft, 8 in	101 in	58 in	3648 lbs	56 gal	13 gal	25+32 qt	44 qt	12 ppl / 2535 lbs	58 in	72 in		17 in	34 in		21°		
		7.2 m	257 cm	147 cm	250 hp	212 L	49 L	24+30 L	42 L	12 ppl / 1150 kg	147 cm	183 cm		43 cm	86 cm		21°		
234LR	SPORT DECKS	23 ft, 11 in	101 in	58 in	4105 lbs	56 gal	13 gal	25+32 qt	44 qt	12 ppl / 2535 lbs	58 in	72 in	34 in	17 in	34 in		21°		
		7.3 m	257 cm	147 cm	5.0 L	212 L	49 L	24+30 L	42 L	12 ppl / 1150 kg	147 cm	183 cm	86 cm	43 cm	86 cm		21°		
		20 ft, 1 in	100 in	50 in	2600 lbs	46 gal	3+13 gal (opt)	67+25+45 qt	67+45 qt	10 ppl / 2225 lbs	55 in	63 in	32 in	15 in	28 in		20°		
		6.1 m	254 cm	127 cm	115 hp	174 L	11+49 L (opt)	63+24+43 L	63+43 L	10 ppl / 1009 kg	140 cm	160 cm	80 cm	37 cm	70 cm		20°		
		21 ft, 11 in	102 in	50 in	3100 lbs	57 gal	3+13 gal (opt)	67+25+45 qt	67+45 qt	12 ppl / 2600 lbs	55 in	63 in	31 in	14 in	28 in		20°		
		6.7 m	259 cm	127 cm	150 hp	216 L	11+49 L (opt)	63+24+43 L	63+43 L	12 ppl / 1179 kg	140 cm	160 cm	79 cm	36 cm	70 cm		20°		
		188LF	FISH BOATS	18 ft, 11 in	88 in	45 in	2350 lbs	21 gal		32+22 qt	22 qt	7 ppl / 1100 lbs	46 in	58 in	29 in	18 in	30 in		19°
		5.8 m		224 cm	114 cm	3.0 L	79 L		30+21 L	21 L	7 ppl / 499 kg	117 cm	147 cm	74 cm	46 cm	76 cm		19°	
19 ft, 6 in	94 in	47 in		2325 lbs	34 gal	6 gal (opt)	32+22 qt	22 qt	9 ppl / 1965 lbs	47 in	59 in		18 in	31 in		19°			
5.9 m	239 cm	119 cm		115 hp	129 L	23 L (opt)	30+21 L	21 L	9 ppl / 891 kg	119 cm	150 cm		46 cm	79 cm		19°			
19 ft, 9 in	94 in	47 in		2662 lbs	34 gal	6 gal (opt)	32+22 qt	22 qt	9 ppl / 1450 lbs	47 in	59 in	32 in	18 in	31 in		19°			
6.0 m	239 cm	119 cm		4.3 L	129 L	23 L (opt)	30+21 L	21 L	9 ppl / 657 kg	119 cm	150 cm	81 cm	46 cm	79 cm		19°			
20 ft, 5 in	99 in	50 in		2510 lbs	34 gal	6 gal (opt)	32+22 qt	88 qt	9 ppl / 1715 lbs	48 in	62 in	30 in	18 in	32 in		20°			
6.2 m	252 cm	127 cm		115 hp	129 L	23 L (opt)	30+13 L	83 L	9 ppl / 778 kg	122 cm	158 cm	76 cm	46 cm	81 cm		20°			
215CR	CUDDIES / CRUISER	21 ft, 11 in	101 in	58 in	3775 lbs	46 gal	13 gal	25 qt	44 qt	11 ppl / 2167 lbs	58 in	72 in	34 in	17 in	34 in	2+1	21°		
		6.7 m	257 cm	147 cm	5.0 L	174 L	49 L	24 L	42 L	11 ppl / 983 kg	147 cm	183 cm	86 cm	43 cm	86 cm	2+1	21°		
		22 ft, 11 in	100 in	55 in	3539 lbs	56 gal	6 gal (opt)	25 qt	44 qt	10 ppl / 2080 lbs	54 in	61 in	33 in	18 in	36 in	2+1	20°		
		7.0 m	254 cm	140 cm	5.0 L	212 L	23 L (opt)	24 L	42 L	10 ppl / 943 kg	137 cm	155 cm	84 cm	46 cm	91 cm	2+1	20°		
		22 ft, 11 in	100 in	45 in	3225 lbs	56 gal		32+25 qt		10 ppl / 2080 lbs	51 in	60 in	33 in	18 in	32 in		20°		
		7.0 m	254 cm	114 cm	5.0 L	212 L		30+24 L		10 ppl / 943 kg	130 cm	152 cm	84 cm	46 cm	81 cm		20°		
		23 ft, 11 in	101 in	58 in	4175 lbs	56 gal	13 gal	25 qt	44 qt	12 ppl / 2535 lbs	58 in	72 in	34 in	17 in	34 in	2+1	21°		
		7.3 m	257 cm	147 cm	5.0 L	212 L	49 L	24 L	42 L	12 ppl / 1150 kg	147 cm	183 cm	86 cm	43 cm	86 cm	2+1	21°		
		25 ft	102 in	65 in	4293 lbs	68 gal	17 gal	32+25 qt		10 ppl / 2265 lbs	68 in	77 in	34 in	17 in	36 in	2+2	21°		
		7.6 m	259 cm	165 cm	5.0 L	257 L	64 L	30+24 L		10 ppl / 1027 kg	168 cm	196 cm	86 cm	43 cm	91 cm	2+2	21°		
250CR	CUDDIES / CRUISER	25 ft	102 in	77 in	4971 lbs	66 gal	25 gal	32+25 qt		10 ppl / 2265 lbs	78 in	92 in	35 in	19 in	35 in	4+1	21°		
		7.6 m	259 cm	196 cm	5.0 L	250 L	95 L	30+24 L		10 ppl / 1027 kg	198 cm	234 cm	89 cm	48 cm	89 cm	4+1	21°		

Specifications may change at any time. For current information, visit StingrayBoats.com/specifications

^{**} Live well may replace icebox on some models.
Applies to 188LF, 194LF, 198LF, and 204LF models.

^A Weights vary depending on installed options.
^B Drive Up +5" on V3.0 to clear bottom of swim platform.

[illegible]



180RX SPORT BOAT



191RX SPORT BOAT



188LE SPORT BOAT



188LF FISH BOAT



194LF FISH BOAT



194LX SPORT DECK



198LF FISH BOAT



198LX SPORT DECK



192SC DECK BOAT



204LF FISH BOAT



204LR SPORT DECK



208LR SPORT DECK



212SC DECK BOAT



214LR SPORT DECK



215LR SPORT DECK



225LR SPORT BOAT



234LR SPORT DECK



235LR SPORT DECK



250LR SPORT BOAT



215CR SPORT DECK CUDDY



225CR CUDDY



225SX SPORT BOAT



235CR SPORT DECK CUDDY



250CR CUDDY



250CS CABIN CRUISER

WARRANTY INFORMATION All Stingray warranties are limited warranties within the meaning of Title 1 of the Federal Trade Commission Improvement Act. A full statement of coverage, terms, and conditions applying to the Stingray warranty has been furnished to all Stingray dealers. In addition, information is supplied with each new boat. Please read carefully the terms and conditions provided in Stingray's Express Limited Warranty accompanying the sale of your boat. The actual length of warranty coverage for your boat may vary depending on the date of original manufacture and sale date of your boat.

ABOUT THIS BROCHURE Only a partial list of standard equipment is shown; some boats are shown with optional accessories. Styling, design, equipment, prices, colors, and construction are subject to change without notice or obligation. To avoid disappointment, please check with your Stingray dealer or visit StingrayBoats.com for current information at the time of purchase.

STINGRAY BOATS 625 Railroad Avenue, Hartsville SC 29550 | 843-383-4507

FIND US ONLINE

stingrayboats.com
mystingray.com
stingrayboats.com/store

facebook.com/stingrayboats
twitter.com/stingrayboats
youtube.com/stingrayboats

