

**TEST CONDITIONS**

Test Date	4/12/2022
Test Conductor	Travis Hayes
Boat Weight as Tested (lbs)	8590
Air Temperature (degrees F)	73
Elevation (ft)	35.50762937
Sea State	Choppy
Wind Velocity range (mph)	10
Fresh/Salt Water	Freshwater
Fuel Level at Testing (gal)	50

**ENGINE SPECIFICATIONS**

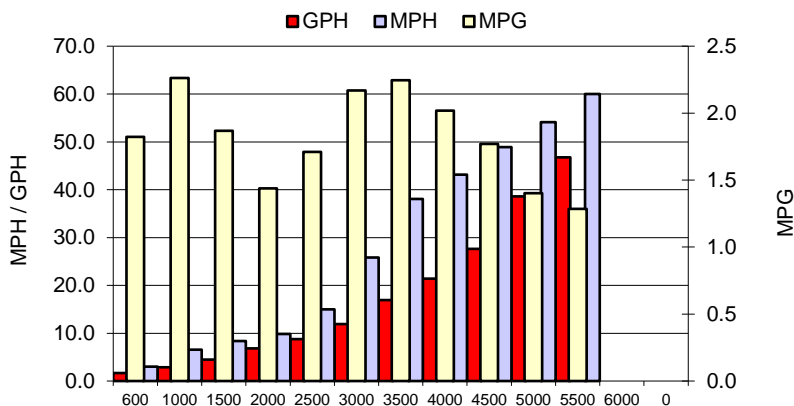
Number of Engines	2
Engine	V8 FourStroke
Horsepower	300
Cylinders	8
Drive or gear model and ratio	HD Straight 1.75
Mounting Bolt Hole	2,2
Engine Height (in)	2.5,2.5
Engine Setback (in)	14.0,14.0
Engine Length (in)	25,25

**PERFORMANCE SUMMARY**

Top Speed (mph @ rpm)	62.4	5782
Acceleration 0 - 20 mph (seconds)	3.4	
Acceleration 0 - 30 mph (seconds)	5.54	

**PROPELLER SPECIFICATIONS**

Mercury Name	Enertia ECO
Material	Stainless Steel
Pitch	21.0,21.0
Number of Blades	3

**PERFORMANCE CURVE**

**BOAT SPECIFICATIONS**

Region/s sold	
Manufacturer	StingRay
Website	
Boat Model	273 CC
Boat Type	Offshore Saltwater
Material	Fiberglass
Length (ft)	27.2
Beam (ft)	8.5
Max hp Capacity	600
Fuel Tank Capacity (gal)	177
Steering Type	Steer-by-Wire
Dry Boat Weight (lbs)	7000

**PERFORMANCE DATA**

RPM	SPEED	FUEL CONSUMPTION	FUEL CONSUMPTION	RANGE
RANGE	MPH	GPH	MPG	MILES
600	3.0	1.7	1.8	322
1000	6.6	2.9	2.3	400
1500	8.4	4.5	1.9	331
2000	9.8	6.8	1.4	255
2500	15.0	8.7	1.7	303
3000	25.8	11.9	2.2	384
3500	38.0	16.9	2.2	398
4000	43.2	21.4	2.0	357
4500	48.9	27.7	1.8	313
5000	54.1	38.6	1.4	248
5500	60.0	46.7	1.3	227
6000	0.0	0.0	0.0	0
0	0.0	0.0	0.0	0
0	0.0	0.0	0.0	0